

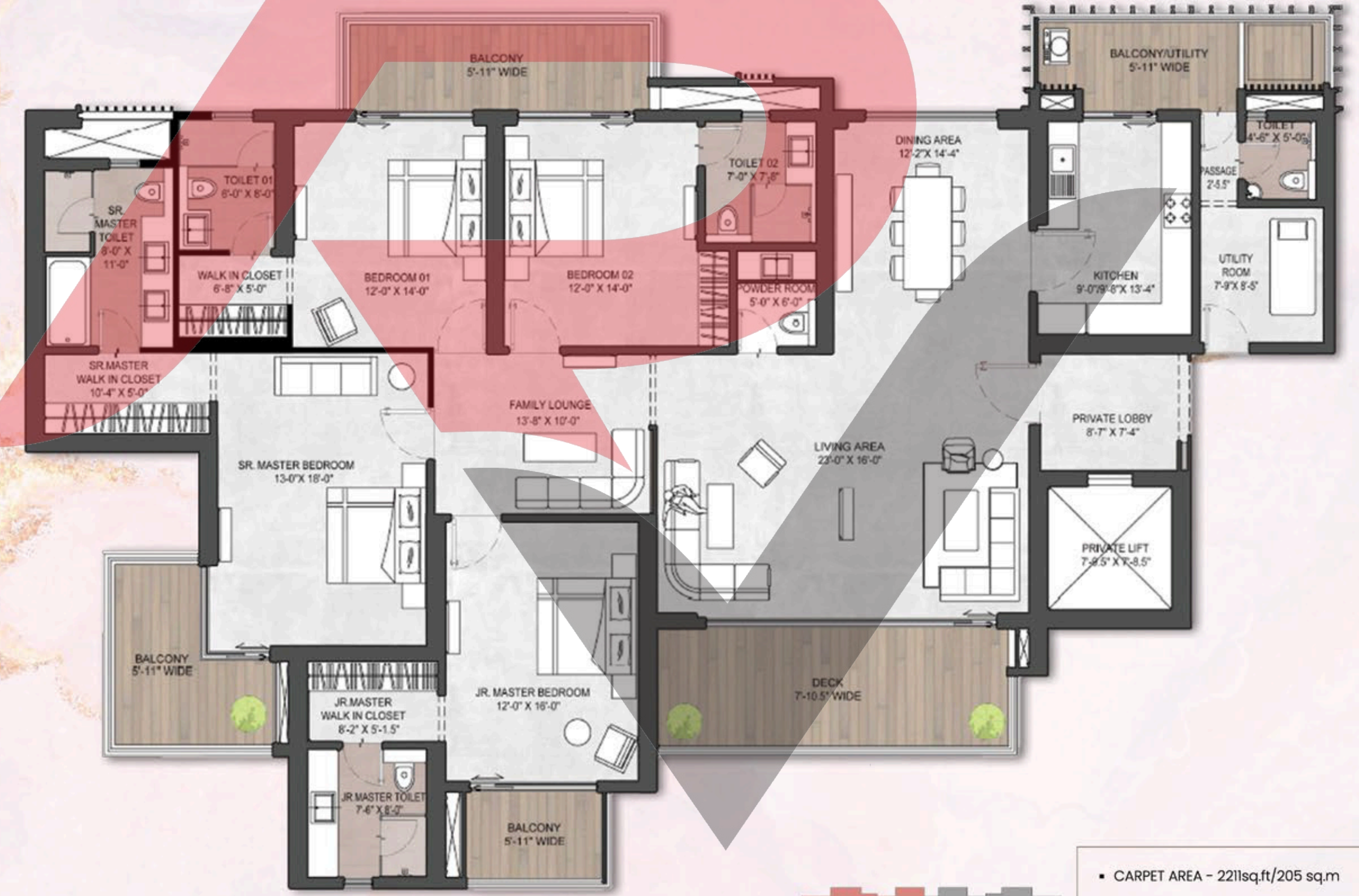
## TYPICAL 3BHK (TOWER A)



- CARPET AREA - 1614 sq.ft/149 sq.m
- EXCLUSIVE AREA - 2160 sq.ft/200 sq.m
- SUPER AREA - 2800 sq.ft/260 sq.m

\*Layout shown represents Apartment 1 & 3  
 \*Apartment 4 and 2 will be the mirror image of 1 and 3  
 \*All dimensions mentioned are approx. figures

## TYPICAL 4BHK (TOWER B1/B2)

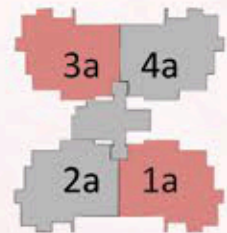


- CARPET AREA - 2211sq.ft/205 sq.m
- EXCLUSIVE AREA - 2936 sq.ft/272 sq.m
- SUPER AREA - 3800 sq.ft/353 sq.m

\*Layout shown represents Apartment 2  
 \*Apartment 1 will be the mirror image of 2  
 \*All dimensions mentioned are approx. figures

4BHK LEVEL 1  
PENTHOUSE (TOWER A)

LEVEL 2

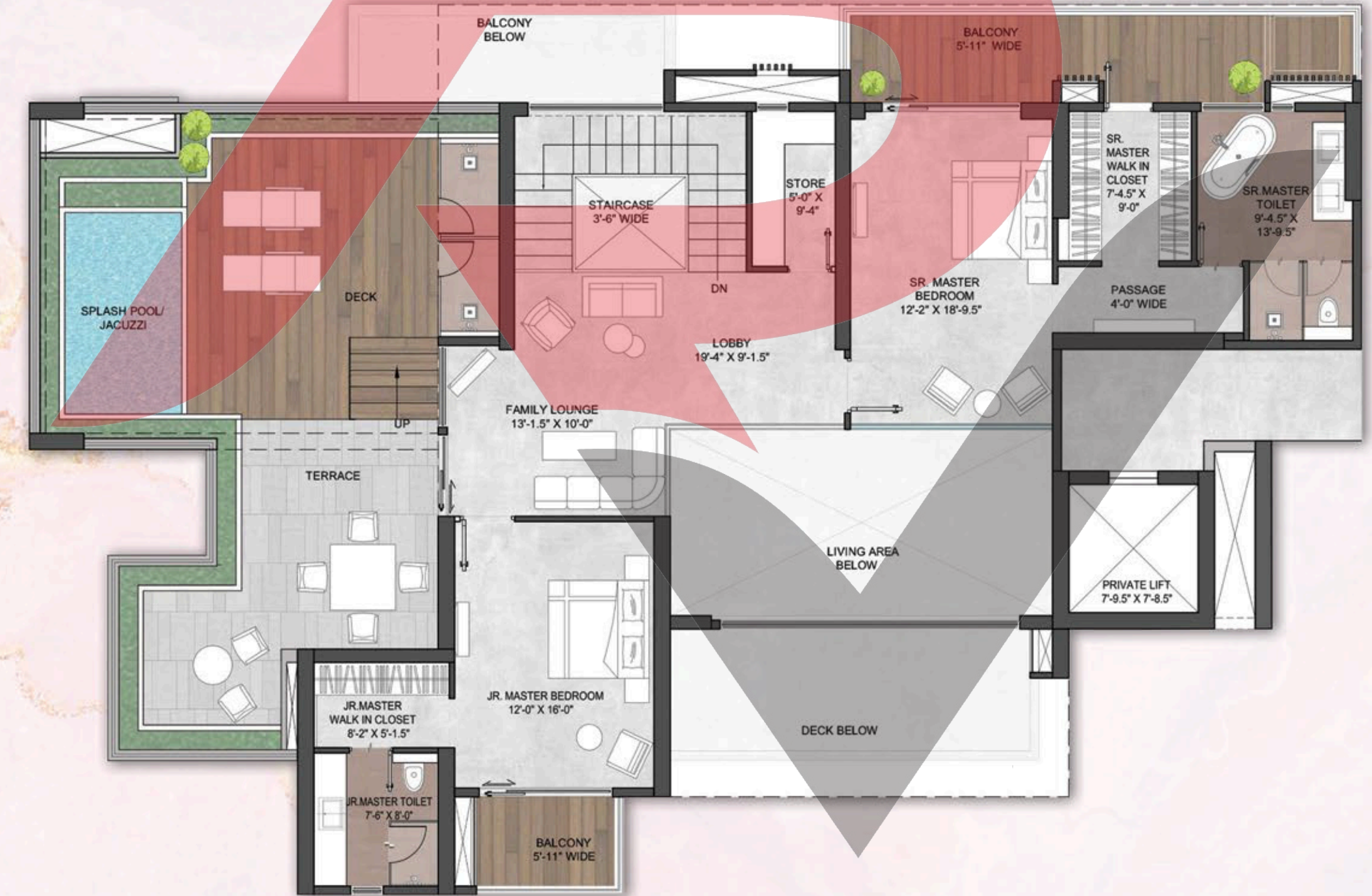


- CARPET AREA - 2374sq.ft/220 sq.m
- EXCLUSIVE AREA - 3145 sq.ft/293 sq.m
- SUPER AREA - 4200 sq.ft/390 sq.m

\*Layout shown represents Apartment 1a & 3a  
 \*Apartment 4a & 2a will be the mirror images of 1a & 3a  
 \*All dimensions mentioned are approx. figures

**5BHK LEVEL 1**  
PENTHOUSE (TOWER B1 & B2)

**LEVEL 2**



- CARPET AREA - 3300sq.ft/306 sq.m
- EXCLUSIVE AREA - 4445 sq.ft/412 sq.m
- SUPER AREA - 5900 sq.ft/548 sq.m



\*Layout shown represents Apartment 2a  
\*Apartment 1a will be the mirror image of Apartment 2a  
\*All dimensions mentioned are approx. figures