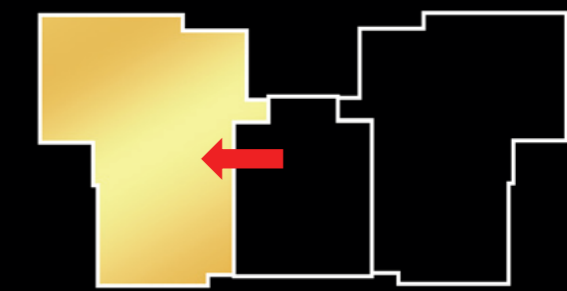


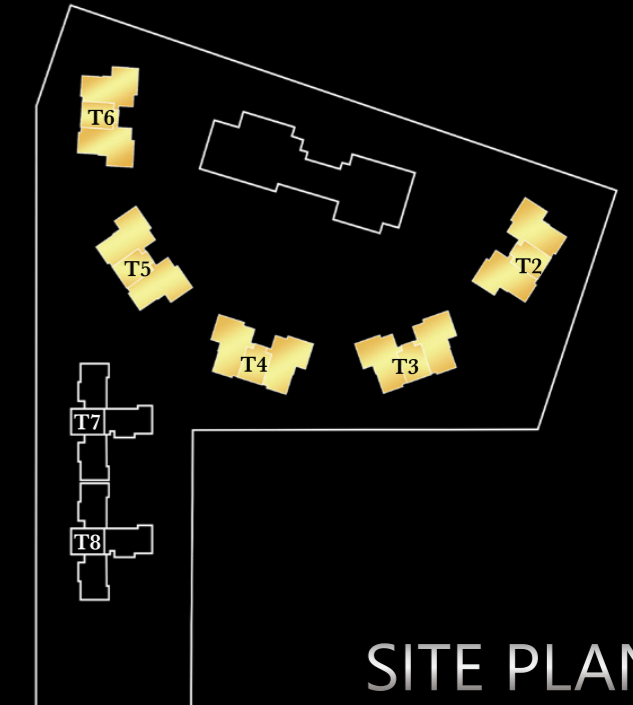


**4.5 BHK
2 TO A CORE**

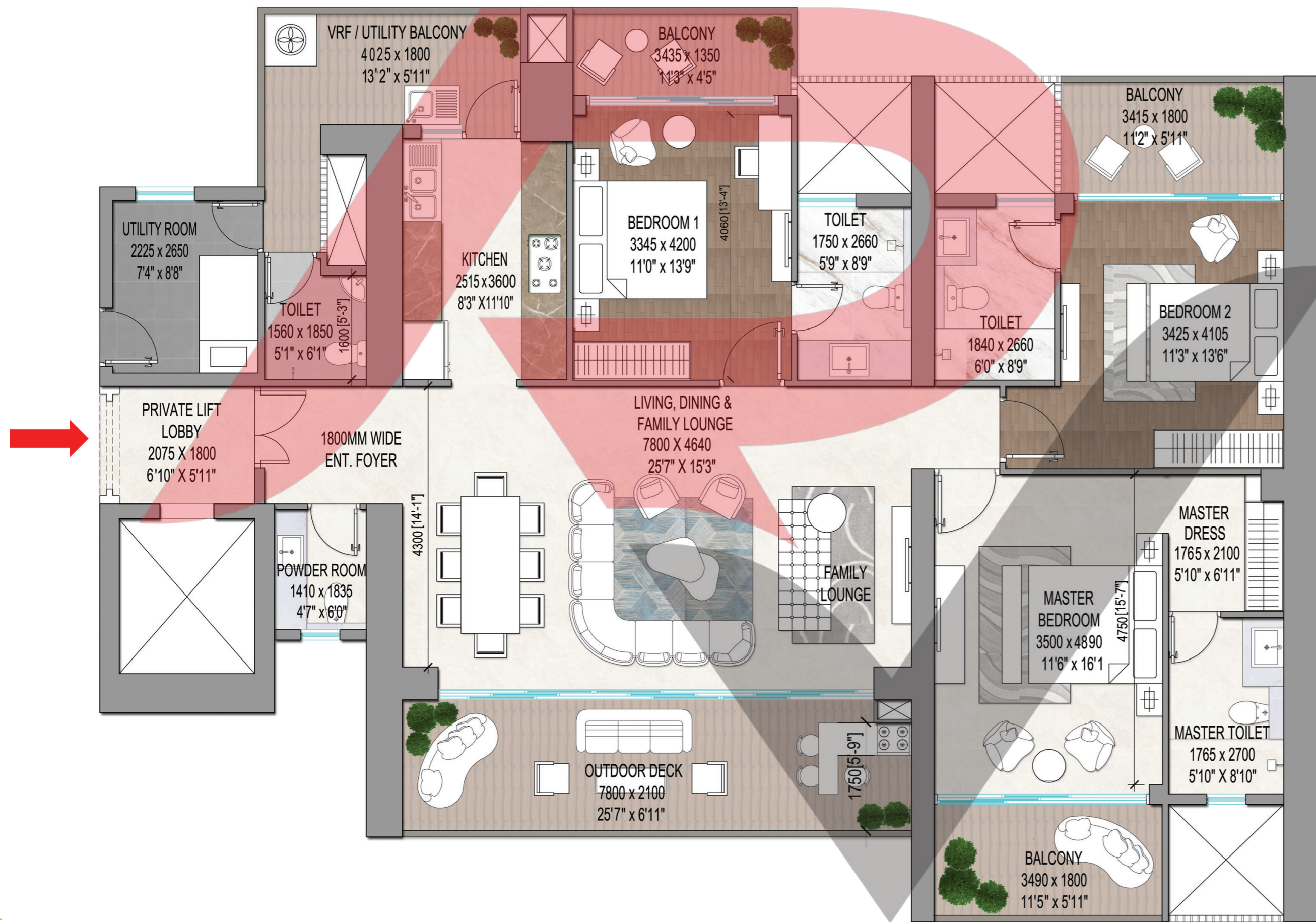
ENTRANCE FOYER + LIVING + DINING & FAMILY LOUNGE
 KITCHEN + POWDER ROOM + PUJA
 MASTER BEDROOM + JUNIOR MASTER BEDROOM
 2 BEDROOMS + 4 TOILETS + UTILITY ROOM



TOWER KEY PLAN

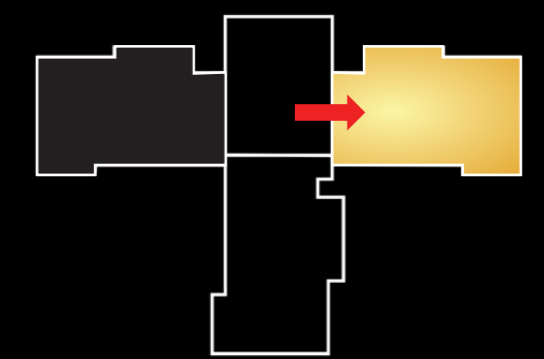


SITE PLAN

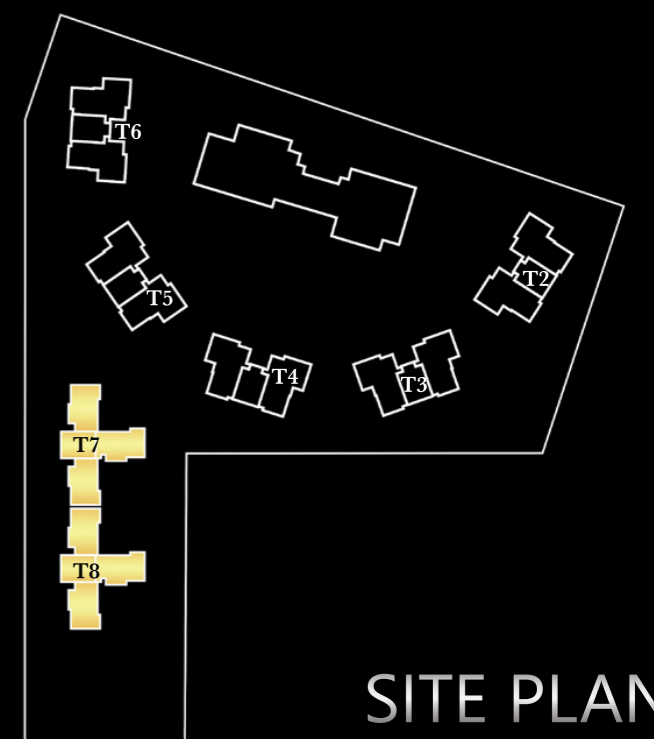


**3.5 BHK
3 TO A CORE**

PRIVATE LIFT + ENTRANCE FOYER
LIVING + DINING & FAMILY LOUNGE + KITCHEN
POWDER ROOM + MASTER BEDROOM + 2 BEDROOMS
3 TOILETS + UTILITY ROOM



TOWER KEY PLAN



SITE PLAN