



SIGNATUREGLOBAL (INDIA) LIMITED | CIN No.: L70100DL2000PLC104787

Branch Office: Shop No. 0004, Svh 83 Metro Street, Sector 83, Gurugram -122003, HR, IN

www.realtyventuresindia.com

Project Site is located at Sector 71, SPR, Gurugram, Haryana.

Disclaimer: The information contained in this Brochure ("Brochure"), is merely informative and unless otherwise expressly provided, all contents are for general information purposes. Nothing contained herein intends to constitute a legal offer / invitation to offer or sale. The reader hereby accepts and agrees to be bound by and comply with these legal terms of use. This Brochure contains proprietary information, exclusive to the Promoter Company.

The contents, and any information or opinion on the project, if any, may not be reproduced, transmitted (by any means), modified, sold, circulated, shared or otherwise provided, in whole or in part, to any other person or entity, nor can it be store, archive or in any other way put to use or used for any public or commercial purpose without the Promoter's explicit consent. Promoter reserves its right to revoke any such consent, without prior notice. Any unauthorized review, use, disclosure, dissemination, forwarding, printing or copying of any page, information of the Brochure or any action taken upon reliance on such information is strictly prohibited and may be unlawful and the Promoter reserves its rights both in law and equity to take appropriate action in this regard.

The information and contents herein, including all designs, layouts, specifications, plans, dimensions, measurements, areas, figures, locations, services, landscape, facilities, amenities & infrastructure etc. are merely indicative, illustrative; and not to scale and are indicative of the envisaged developments; and subject to revision by the Promoter as may be required and approved by the Competent Authorities. Actual design may vary in the fit and finished form, from the one displayed above. Revision, alteration, modification, addition, deletion, substitution or recast, if any, may be necessary during construction. The units mentioned herein are subject to availability.

Recipients/viewers are advised to exercise their discretion in relying on the information shown/provided and are requested to verify all the details, including area, amenities, services, terms of sales and payments and other relevant terms independently with the Promoter Company, have understanding of the same and take appropriate independent advice prior to concluding any decision for buying any Unit(s) in the Project.

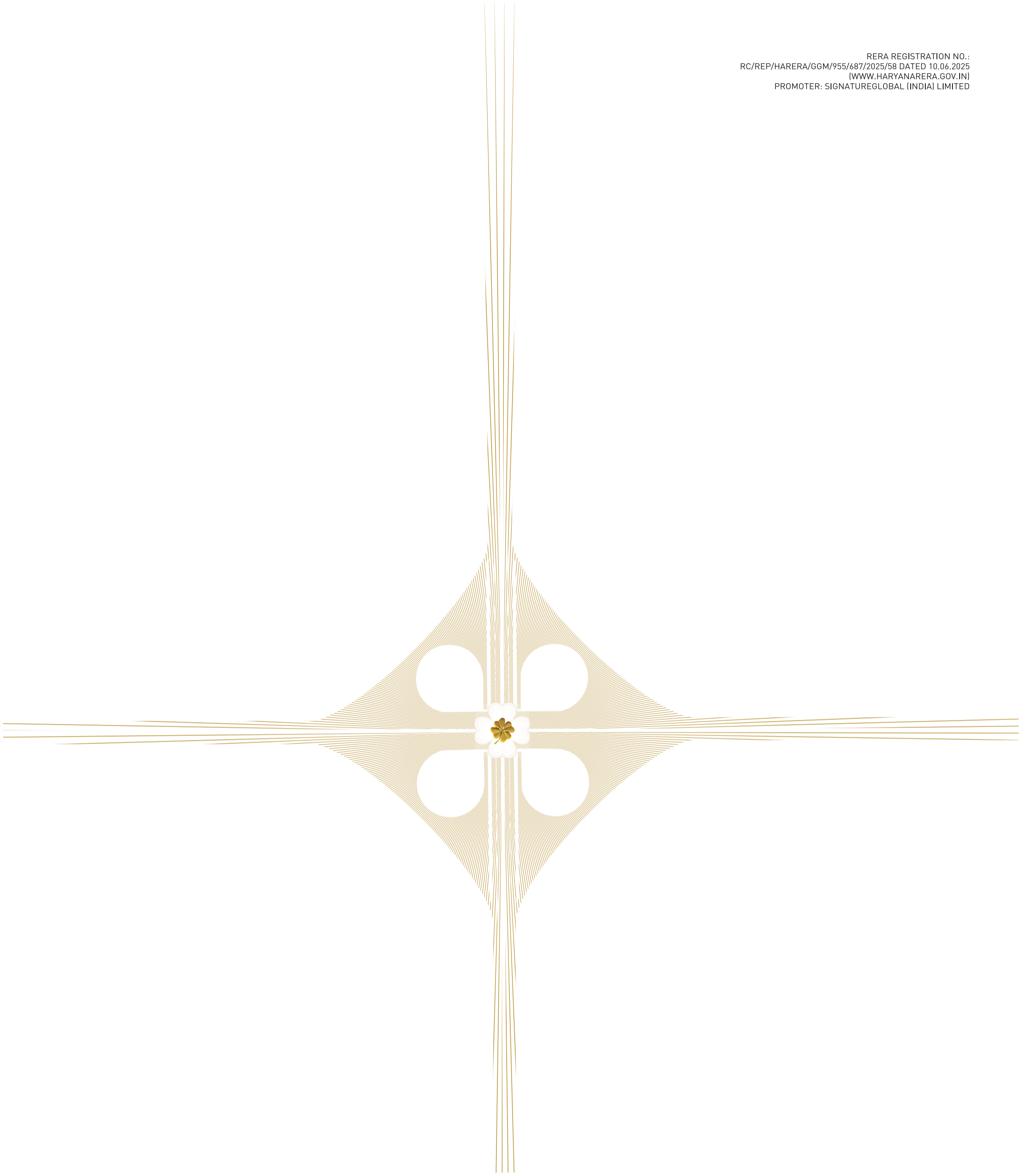
Signatureglobal Cloverdate SPR is a Group House Colony being developed by Signatureglobal (India) Limited on 8.12 acres of land (as Phase II) out of the Licensed land admeasuring 22.50 acres in the revenue estate of village Fazilpur, Jharsa, Sector-71, Gurugram. DTCP has granted License No. 09 of 2010 dated 23.01.2010 to develop the Group Housing Colony. That DTCP vide Order 29.04.2024 ("Transfer of License") confirmed that the Licensed Land of M/s Indica Estate Pvt. Ltd. (formerly known as M/s Vipul SEZ Developers Ltd.) and M/s PKBK Buildwell Pvt. Ltd., C/o M/s Vipul Ltd. under the Project License granted has been transferred in the name of Signatureglobal (India) Limited. The Project is duly registered with Haryana Real Estate Regulatory Authority vide H-RERA Registration No. RC/REP/HARERA/GGM/955/687/2025/58 dated 10.06.2025. Copies of approvals are available for inspection at Promoter Company corporate office.

The use of word 'Signature Global' shall in no manner be construed or interpreted as Signature Global (India) Ltd. being the Promoter and / or Developer. *Rate mentioned above, if any, does not include GST and other statutory charges as applicable.

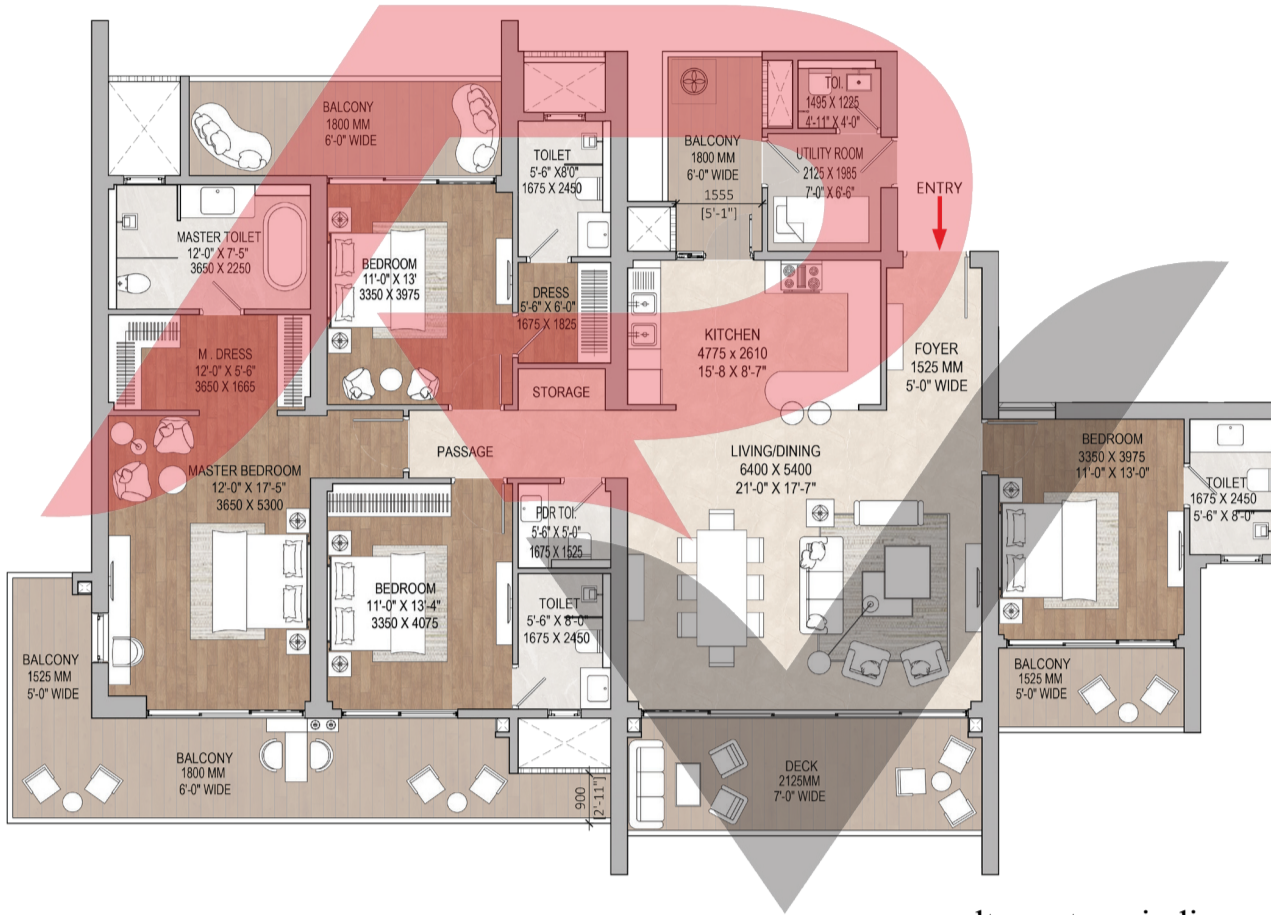
Dispute with regard to the interpretation of information will be subject to the exclusive jurisdiction of District Courts at Gurugram, Haryana and Hon'ble High Court of Punjab & Haryana at Chandigarh, India.

1 sq. mt.=10.7639 sq. ft.

RERA REGISTRATION NO.:
RC/REP/HARERA/GGM/955/687/2025/58 DATED 10.06.2025
(WWW.HARYANARERA.GOV.IN)
PROMOTER: SIGNATUREGLOBAL (INDIA) LIMITED

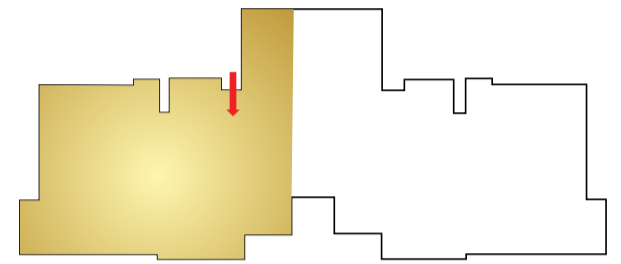


CLOVERDALE
SPR



**4 BHK + UTILITY
T1 - ICONIC**

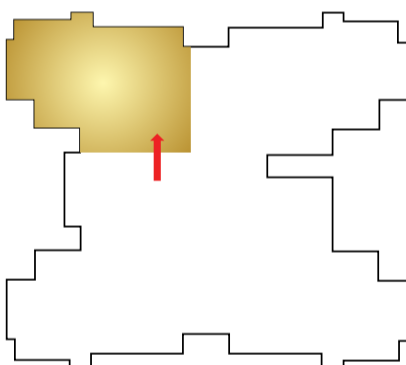
4 BEDROOMS + 4 TOILETS
LIVING + DINING + KITCHEN
POWDER ROOM + MASTER DRESS ROOM
ENTRANCE FOYER



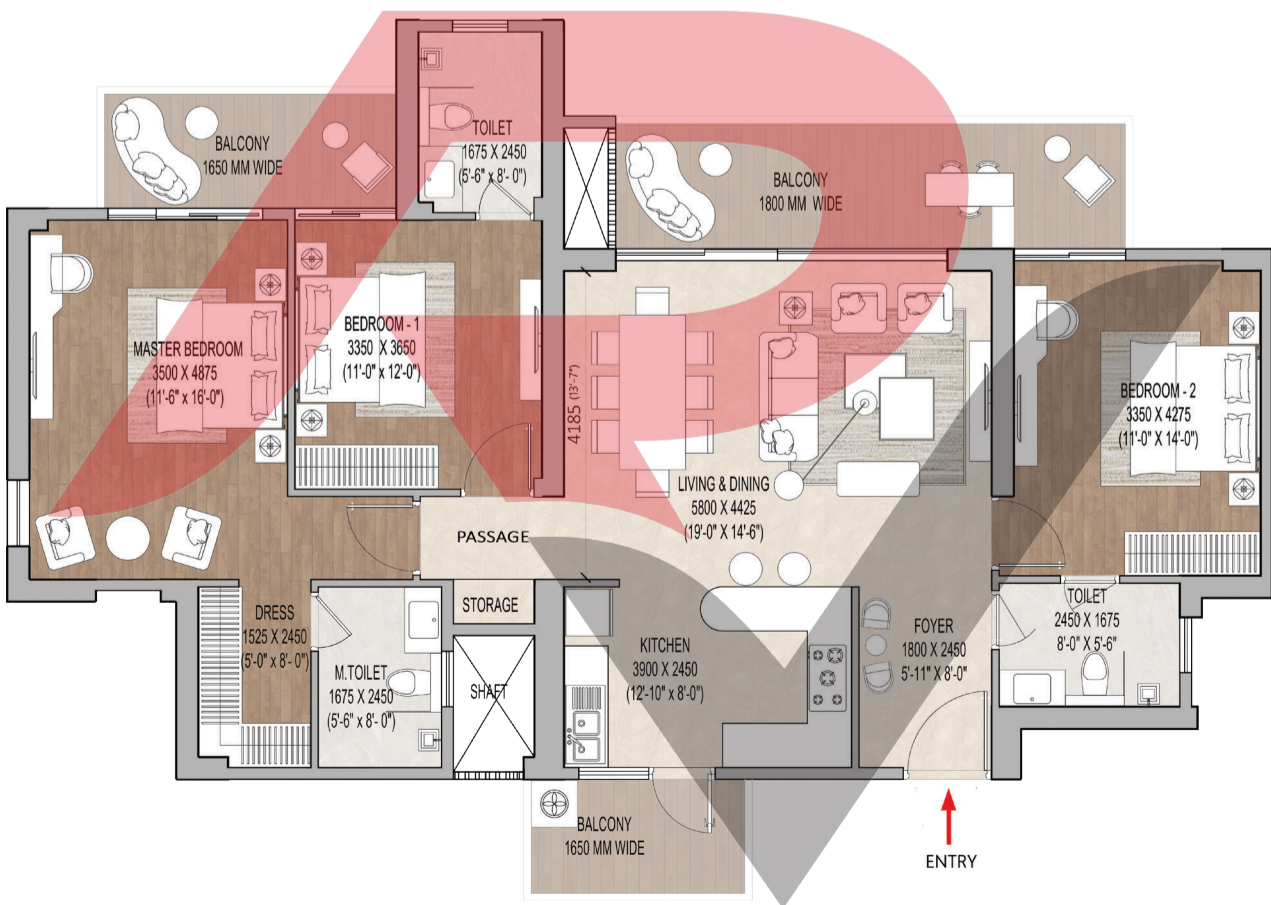
www.realtyventuresindia.com

**3 BHK + UTILITY
T9 & T10**

3 BEDROOMS + 3 TOILETS
LIVING + DINING + KITCHEN
UTILITY ROOM + DRESS ROOM
ENTRANCE FOYER

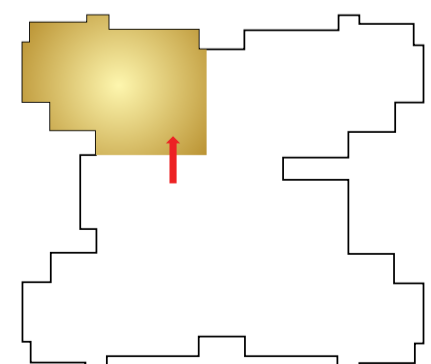


www.realtyventuresindia.com



**3 BHK
T11, T12 & T14**

3 BEDROOMS + 3 TOILETS
LIVING + DINING + KITCHEN
DRESS ROOM + ENTRANCE FOYER



www.realtyventuresindia.com