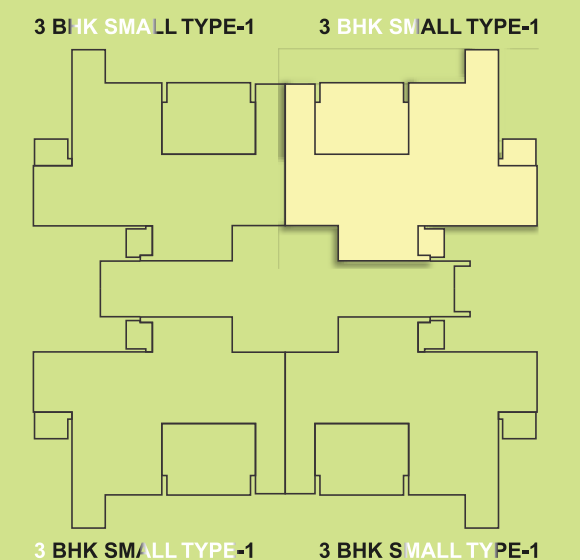


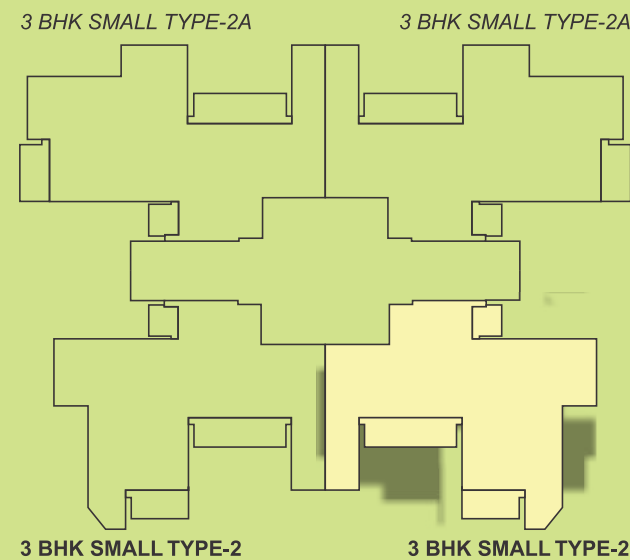
**TYPE 1 -**  
 Reference Area: 1490 sq. ft. 3BHK + 3T  
 Carpet Area: 862.18 ~ 865.52 sq.ft.  
 Balcony Area: 136.48 ~ 141.54 sq.ft.  
 For Towers C,D,E,F and H

Note: Visual representations shown in this brochure are purely conceptual. All building plans, specifications, layout plans etc. are tentative and subject to variation & modification by the company or the competent authorities sanctioning plans. Brand names appearing in the brochure are for artwork purposes only.  
 1sq.m. = 10.763 sq.ft.

**Type 1 -**  
 Reference Area: 1620 sq. ft. 3BHK + 3T + TERRACE  
 Carpet Area: 862.18 ~ 865.52 sq.ft.  
 Balcony Area: 280.6 ~ 285.88 sq.ft.  
 Towers C,D,E,F and H

Note: Visual representations shown in this brochure are purely conceptual. All building plans, specifications, layout plans etc. are tentative and subject to variation & modification by the company or the competent authorities sanctioning plans. Brand names appearing in the brochure are for artwork purposes only.  
 1sq.m. = 10.763 sq.ft.





**TYPE 2 -**

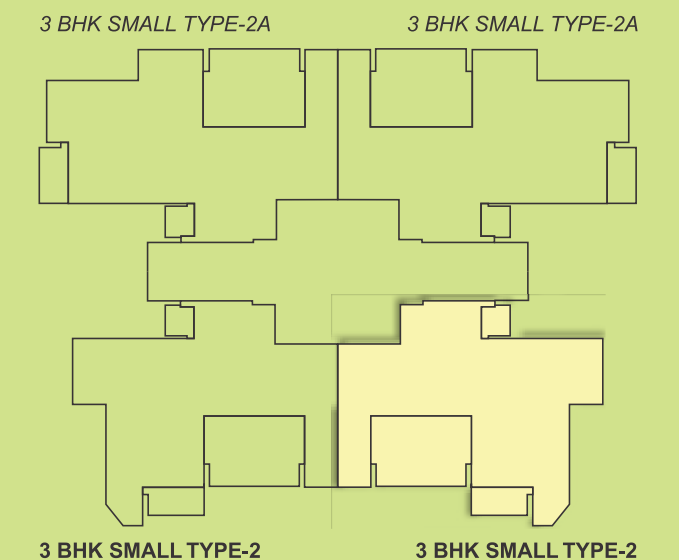
Reference Area: 1510 sq. ft. 3BHK + 3T  
 Carpet Area: 862.18 sq.ft  
 Balcony Area: 158.87 sq.ft  
 For Tower G Front Units

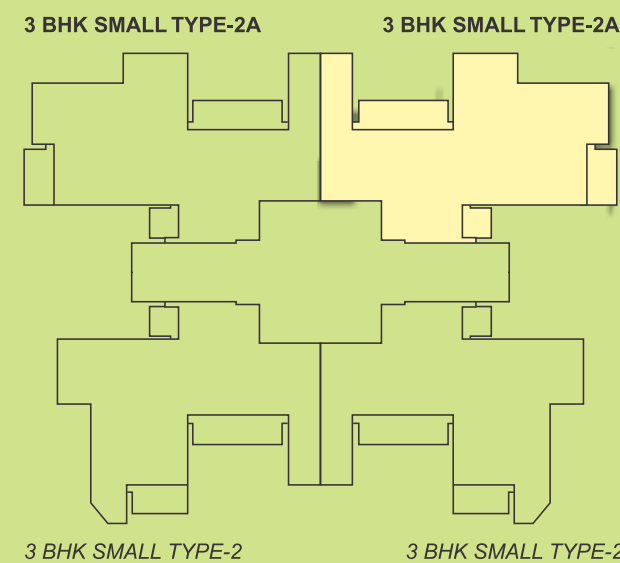
Note: Visual representations shown in this brochure are purely conceptual. All building plans, specifications, layout plans etc. are tentative and subject to variation & modification by the company or the competent authorities sanctioning plans. Brand names appearing in the brochure are for artwork purposes only.  
 1sq.m. = 10.763 sq.ft.

**TYPE 2 -**

Reference Area: 1620 sq. ft. 3BHK + 3T + Terrace  
 Carpet Area: 862.18 sq.ft.  
 Balcony Area: 285.99 sq.ft.  
 Tower G Front Unit

Note: Visual representations shown in this brochure are purely conceptual. All building plans, specifications, layout plans etc. are tentative and subject to variation & modification by the company or the competent authorities sanctioning plans. Brand names appearing in the brochure are for artwork purposes only.  
 1sq.m. = 10.763 sq.ft.





**TYPE 2A -**

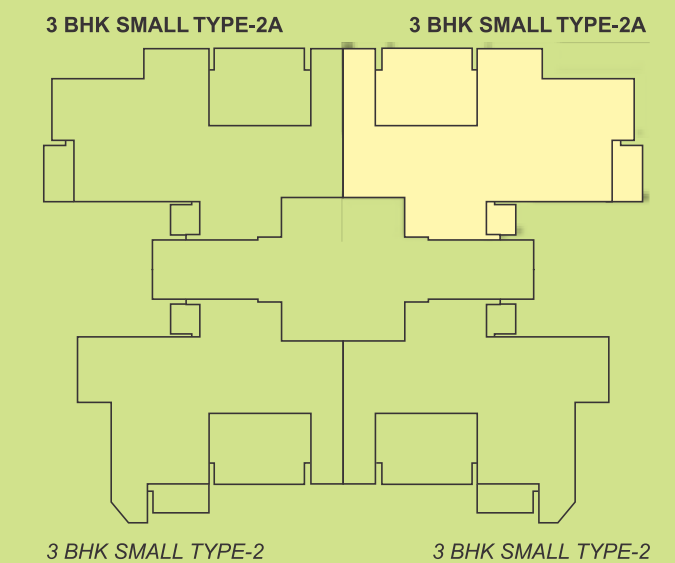
Reference Area: 1510 sq. ft. 3BHK + 3T  
 Carpet Area: 867.24 sq.ft.  
 Balcony Area: 158.87 sq.ft.  
 Tower G Back Units

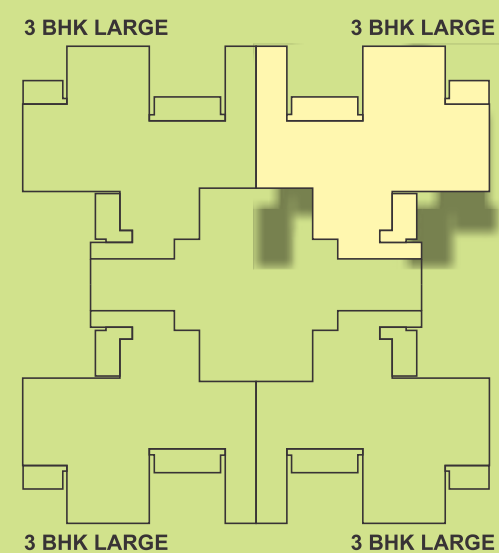
Note: Visual representations shown in this brochure are purely conceptual. All building plans, specifications, layout plans etc. are tentative and subject to variation & modification by the company or the competent authorities sanctioning plans. Brand names appearing in the brochure are for artwork purposes only.  
 1sq.m. = 10.763 sq.ft.

**TYPE 2A -**

Reference Area: 1620 sq. ft. 3BHK + 3T + TERRACE  
 Carpet Area: 867.24 sq.ft.  
 Balcony Area: 303.1 sq.ft.  
 Tower G Back Units

Note: Visual representations shown in this brochure are purely conceptual. All building plans, specifications, layout plans etc. are tentative and subject to variation & modification by the company or the competent authorities sanctioning plans. Brand names appearing in the brochure are for artwork purposes only.  
 1sq.m. = 10.763 sq.ft.

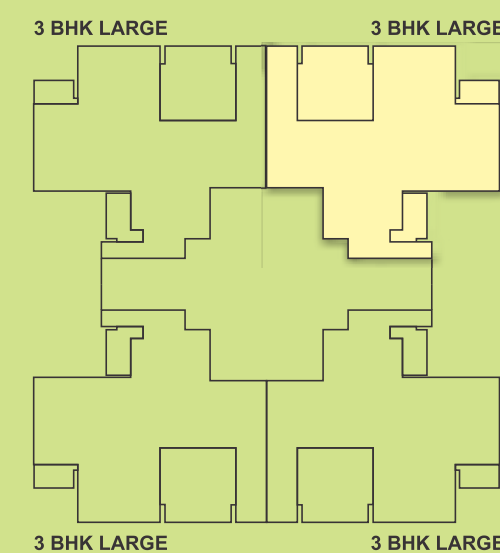




Reference Area: 1815 sq. ft. 3BHK + 3T + SR  
 Carpet Area: 1071.33 sq.ft. ~ 1074.23 sq. ft  
 Balcony Area: 167.27 sq.ft. ~ 167.70 sq.ft.  
 Tower B and A (1 and 4 Units)

Note: Visual representations shown in this brochure are purely conceptual. All building plans, specifications, layout plans etc. are tentative and subject to variation & modification by the company or the competent authorities sanctioning plans. Brand names appearing in the brochure are for artwork purposes only.

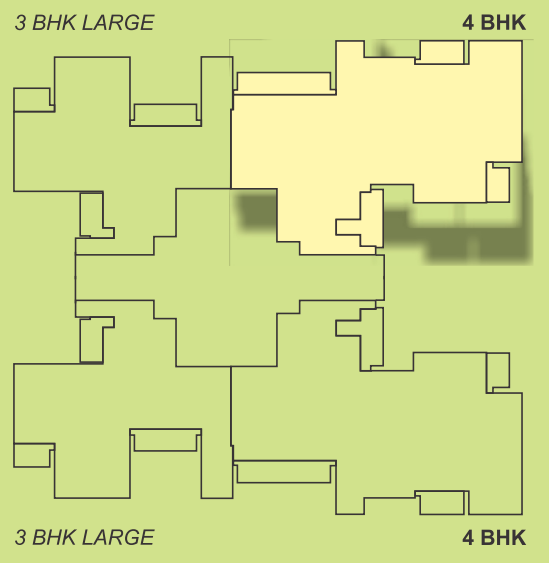
1sq.m. = 10.763 sq.ft.



Reference Area: 1960 sq. ft. 3BHK + 3T + SR + TERRACE  
 Carpet Area: 1071.33 sq.ft. ~ 1074.23 sq. ft  
 Balcony Area: 326.46 sq.ft.  
 Tower B and A (1 and 4 Units)

Note: Visual representations shown in this brochure are purely conceptual. All building plans, specifications, layout plans etc. are tentative and subject to variation & modification by the company or the competent authorities sanctioning plans. Brand names appearing in the brochure are for artwork purposes only.

1sq.m. = 10.763 sq.ft.



Reference Area: 2650 sq. ft. 4BHK + 4T + SR  
 Carpet Area: 1687.99 sq.ft.  
 Balcony Area: 276.74 sq.ft.  
 Tower A (2 and 3 Units)

Note: Visual representations shown in this brochure are purely conceptual. All building plans, specifications, layout plans etc. are tentative and subject to variation & modification by the company or the competent authorities sanctioning plans. Brand names appearing in the brochure are for artwork purposes only.  
 1sq.m. = 10.763 sq.ft.

Reference Area: 2710 sq. ft. 4BHK + 4T + SR + TERRACE  
 Carpet Area: 1687.99 sq.ft.  
 Balcony Area: 350.36 sq.ft.  
 Tower A (2 and 3 Units)

Note: Visual representations shown in this brochure are purely conceptual. All building plans, specifications, layout plans etc. are tentative and subject to variation & modification by the company or the competent authorities sanctioning plans. Brand names appearing in the brochure are for artwork purposes only.  
 1sq.m. = 10.763 sq.ft.

