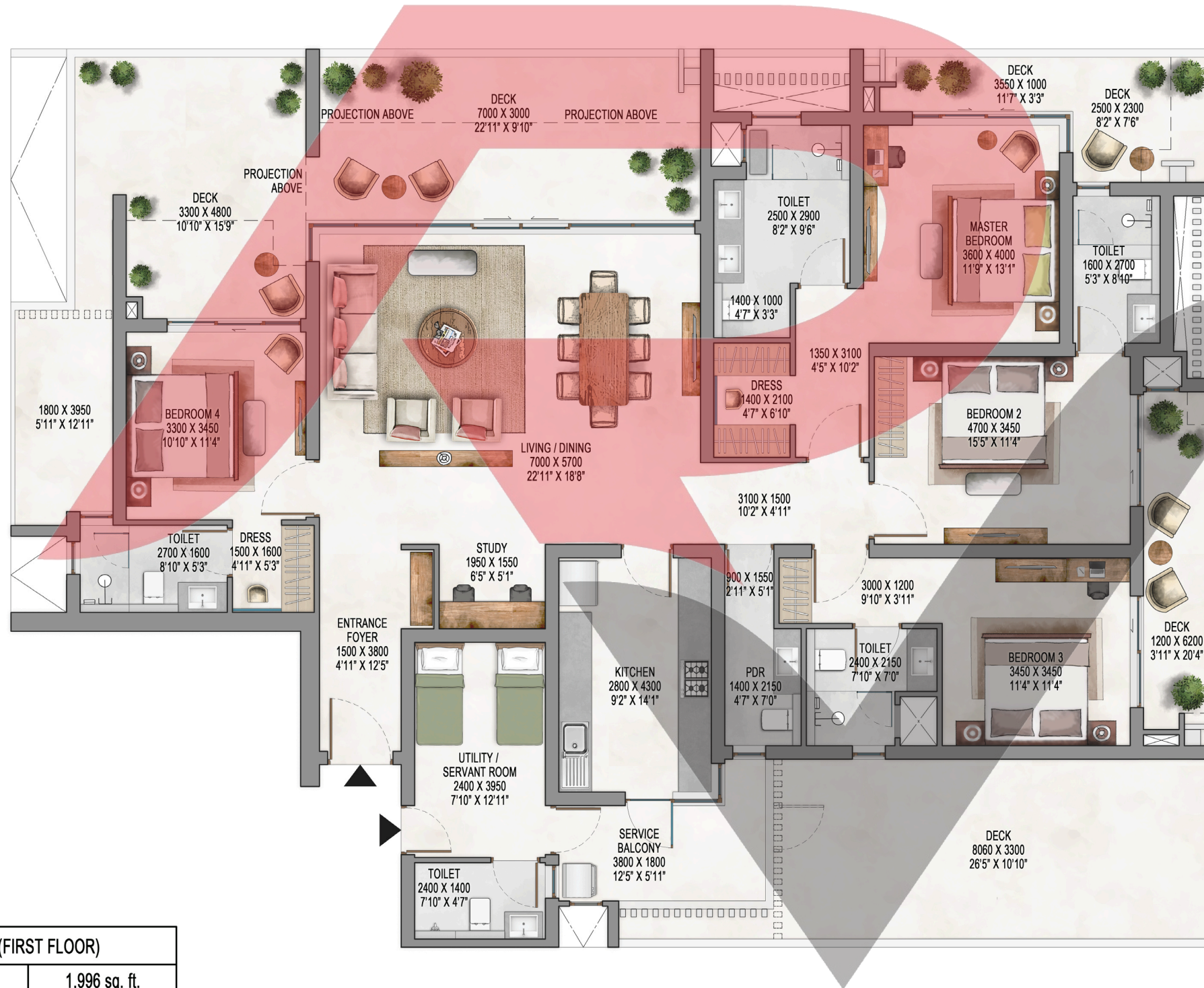




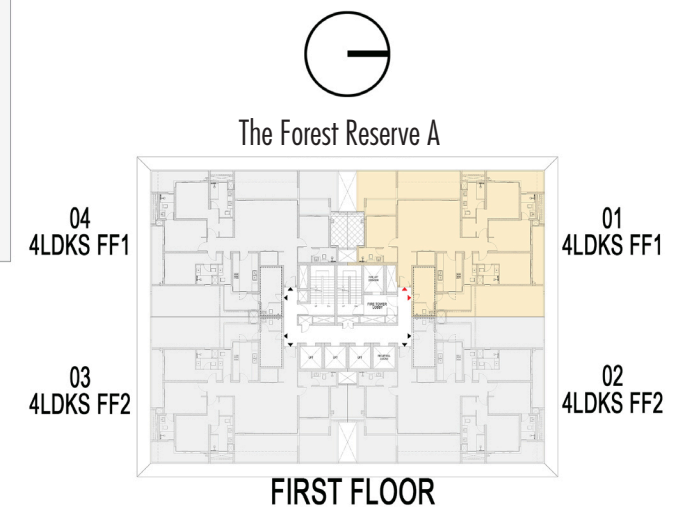
UNIT PLANS



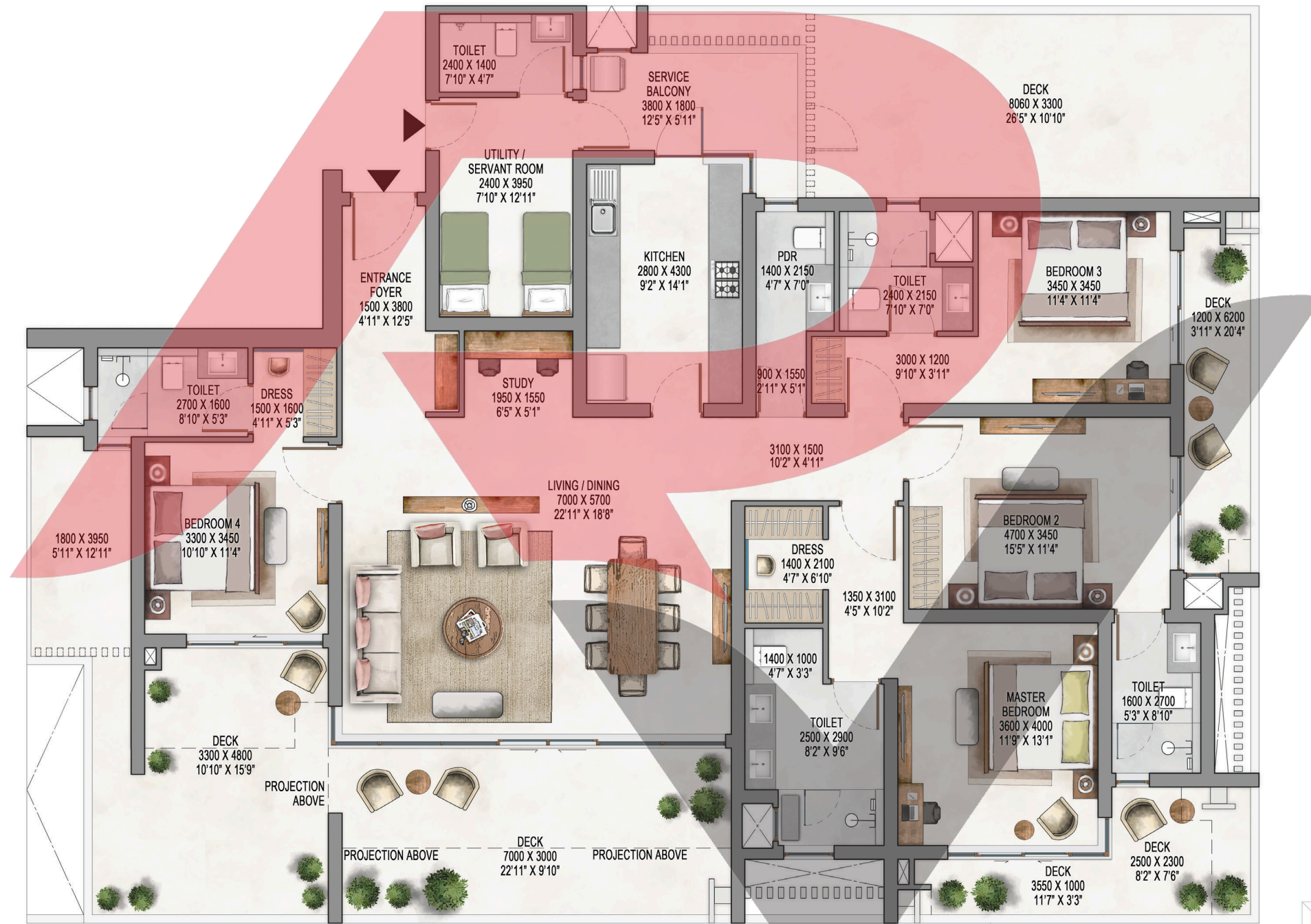
Waterside Residences - The Forest Reserve A - 4LDKS FF 1



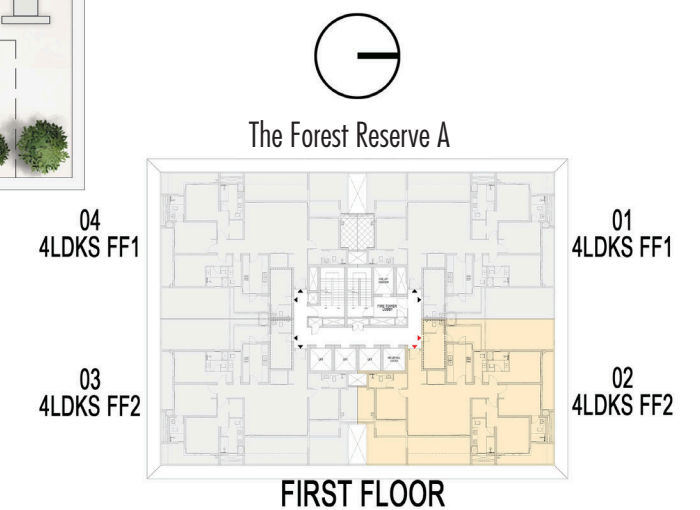
UNIT - 4LDK+SERVANT FF1 (FIRST FLOOR)		
CARPET AREA	185.47 sq. mt.	1,996 sq. ft.
EXCLUSIVE AREA	309.10 sq. mt.	3,327 sq. ft.
SALEABLE AREA	370.94 sq. mt.	3,993 sq. ft.



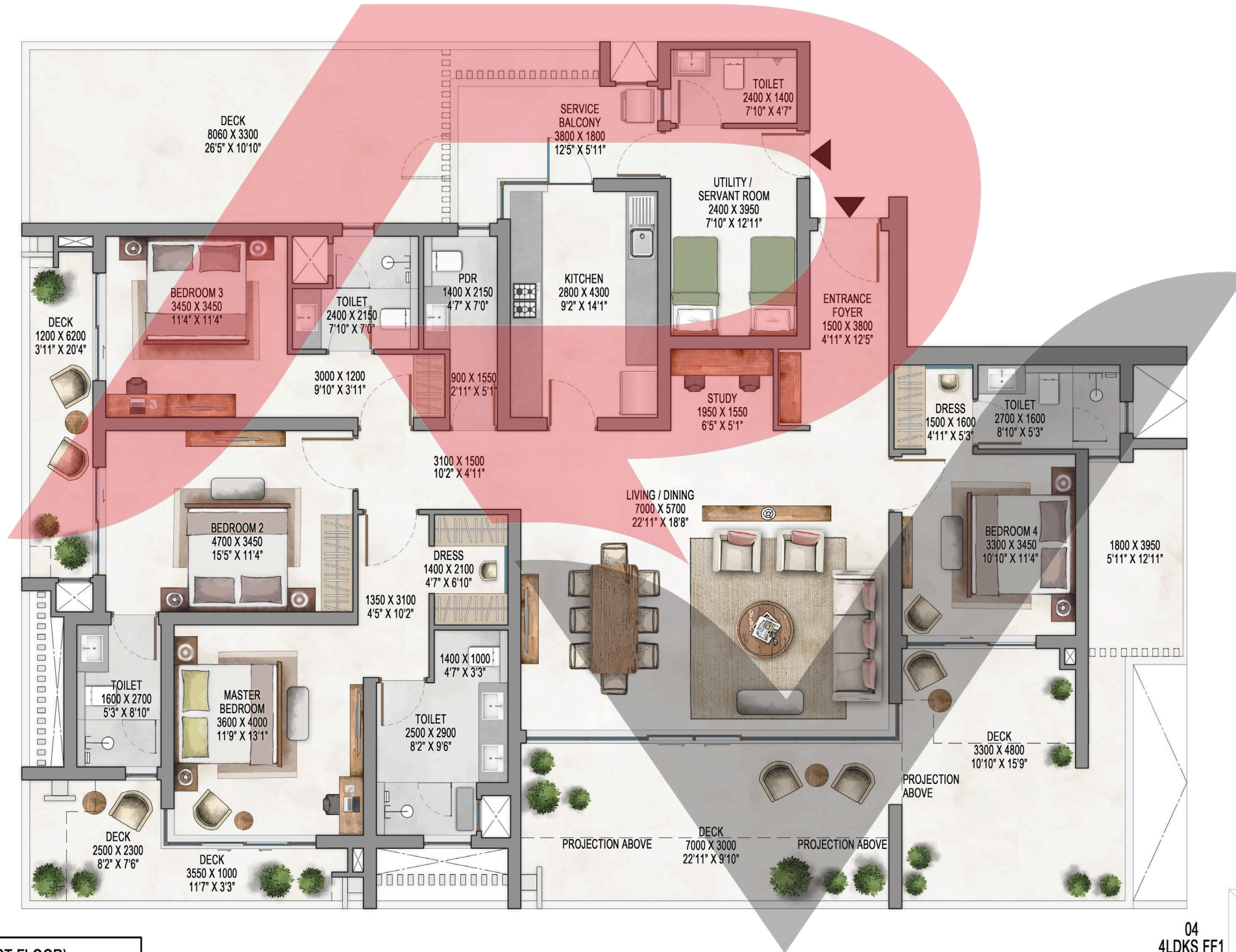
Waterside Residences - The Forest Reserve A - 4LDKS FF 2



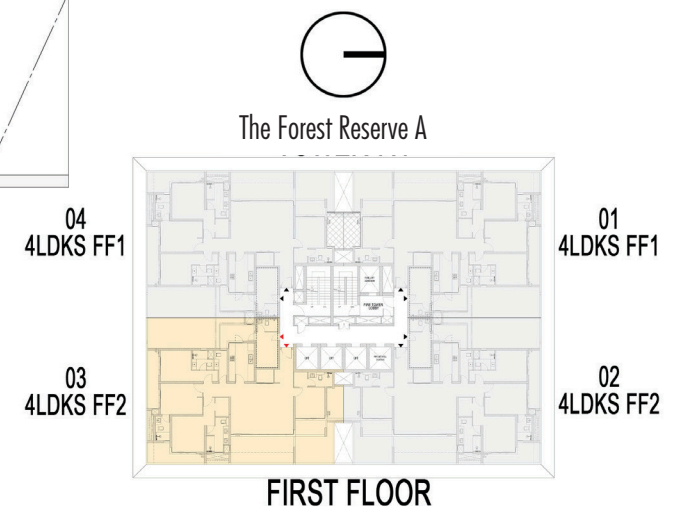
UNIT - 4LDK+SERVANT FF2 (FIRST FLOOR)		
CARPET AREA	185.47 sq. mt.	1,996 sq. ft.
EXCLUSIVE AREA	316.56 sq. mt.	3,407 sq. ft.
SALEABLE AREA	370.94 sq. mt.	3,993 sq. ft.



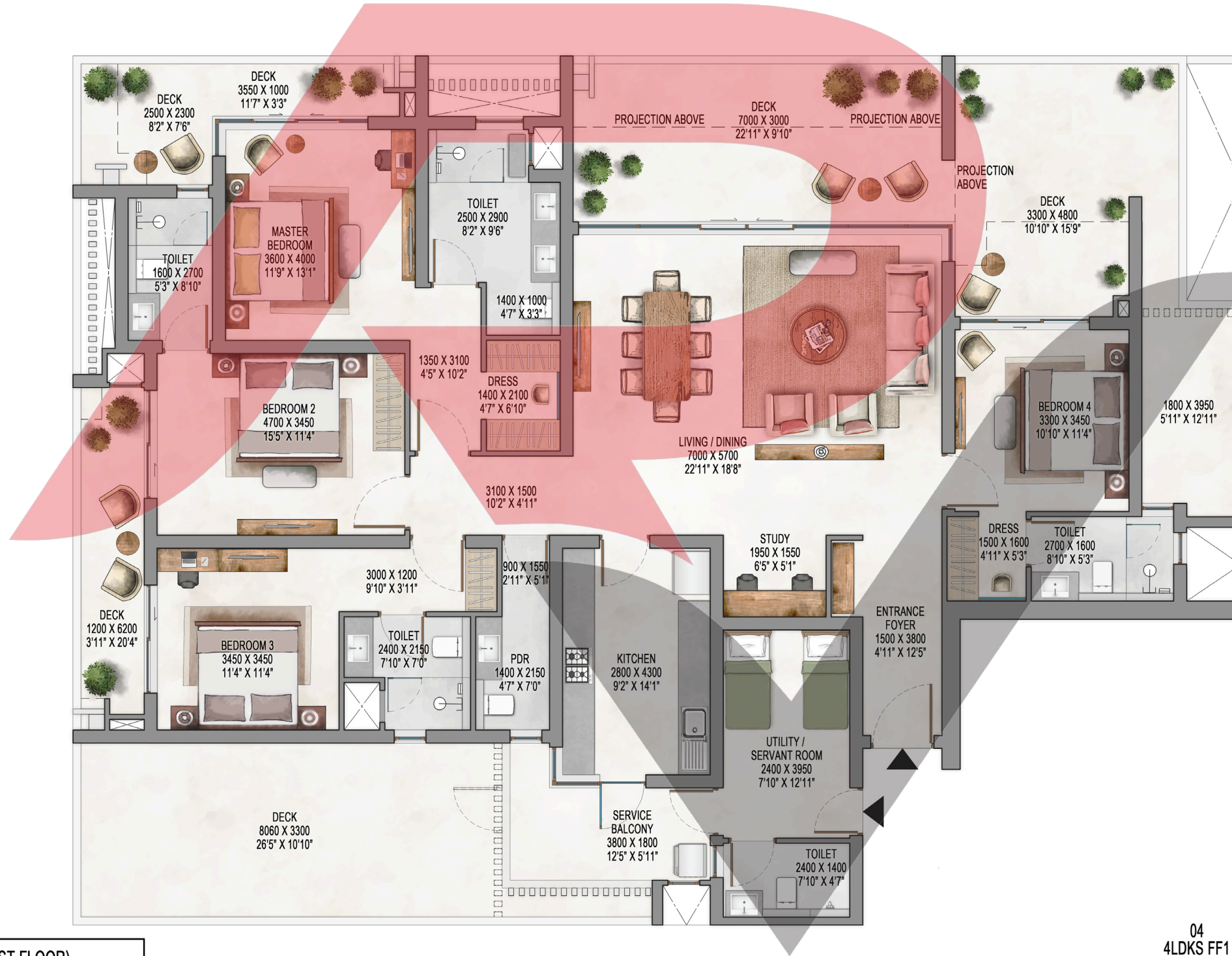
Waterside Residences - The Forest Reserve A - 4LDKS FF 2



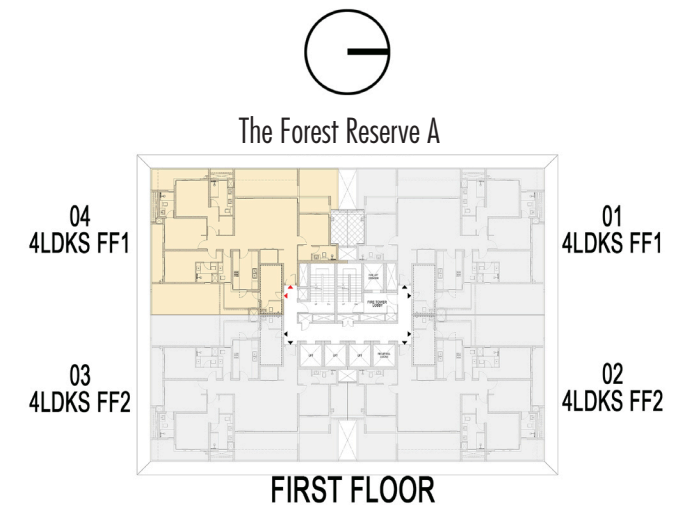
UNIT - 4LDK+SERVANT FF2 (FIRST FLOOR)		
CARPET AREA	185.47 sq. mt.	1,996 sq. ft.
EXCLUSIVE AREA	316.56 sq. mt.	3,407 sq. ft.
SALEABLE AREA	370.94 sq. mt.	3,993 sq. ft.



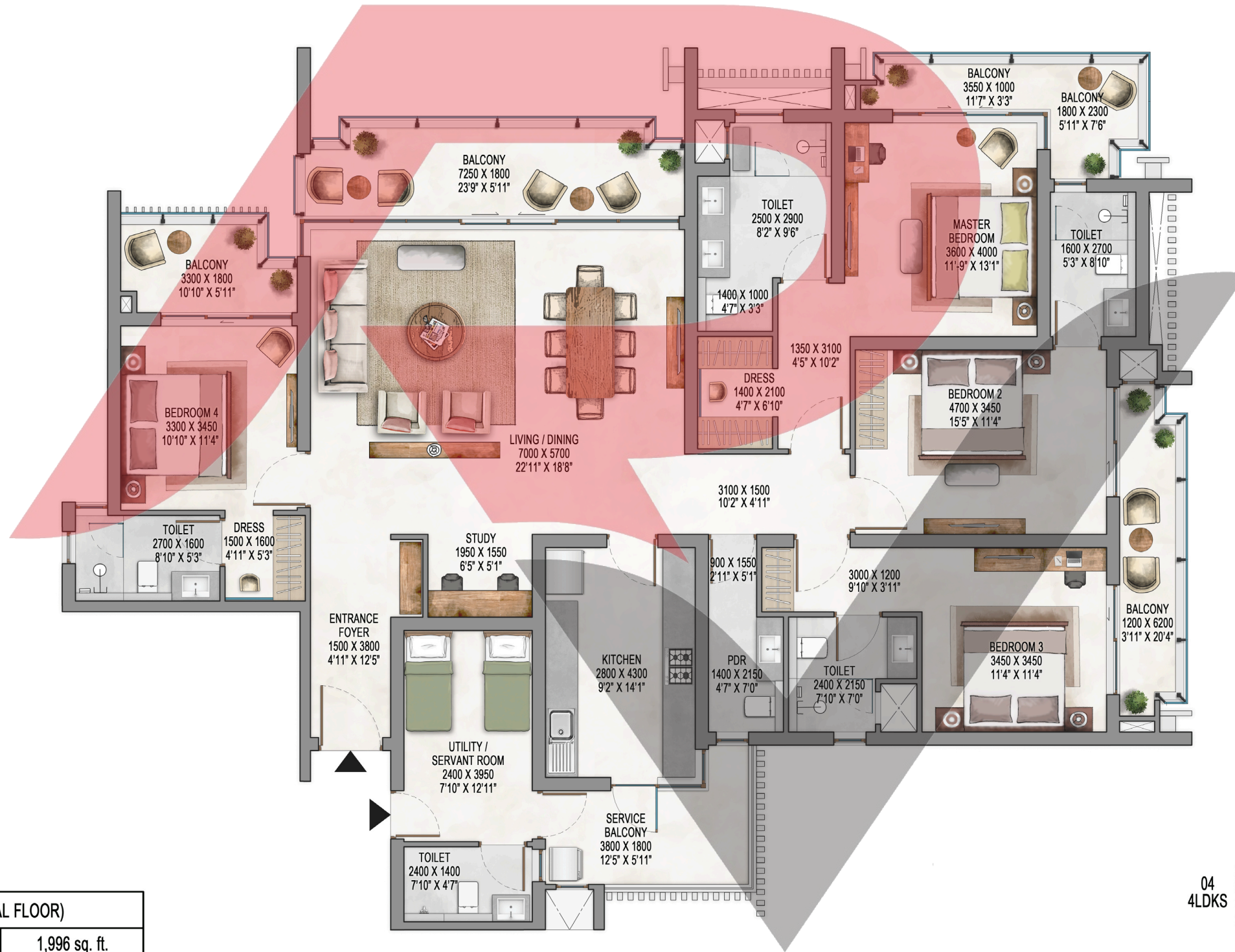
Waterside Residences - The Forest Reserve A - 4LDKS FF 1



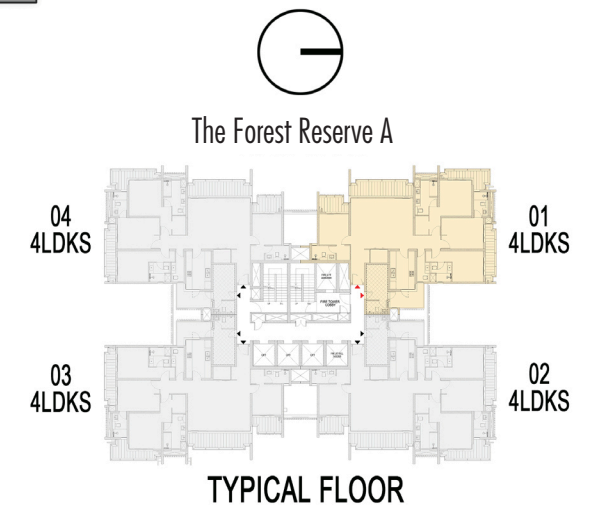
UNIT - 4LDK+SERVANT FF1 (FIRST FLOOR)		
CARPET AREA	185.47 sq. mt.	1,996 sq. ft.
EXCLUSIVE AREA	309.10 sq. mt.	3,327 sq. ft.
SALEABLE AREA	370.94 sq. mt.	3,993 sq. ft.



Waterside Residences - The Forest Reserve A - 4LDKS Typical



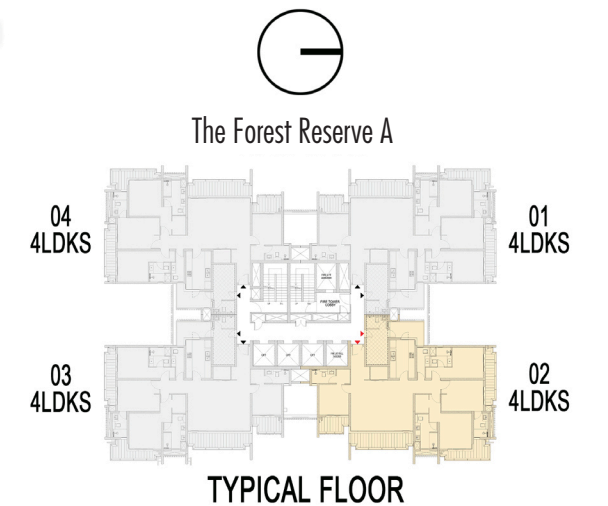
UNIT - 4LDK+SERVANT (TYPICAL FLOOR)		
CARPET AREA	185.47 sq. mt.	1,996 sq. ft.
EXCLUSIVE AREA	244.79 sq. mt.	2,635 sq. ft.
SALEABLE AREA	337.22 sq. mt.	3,630 sq. ft.



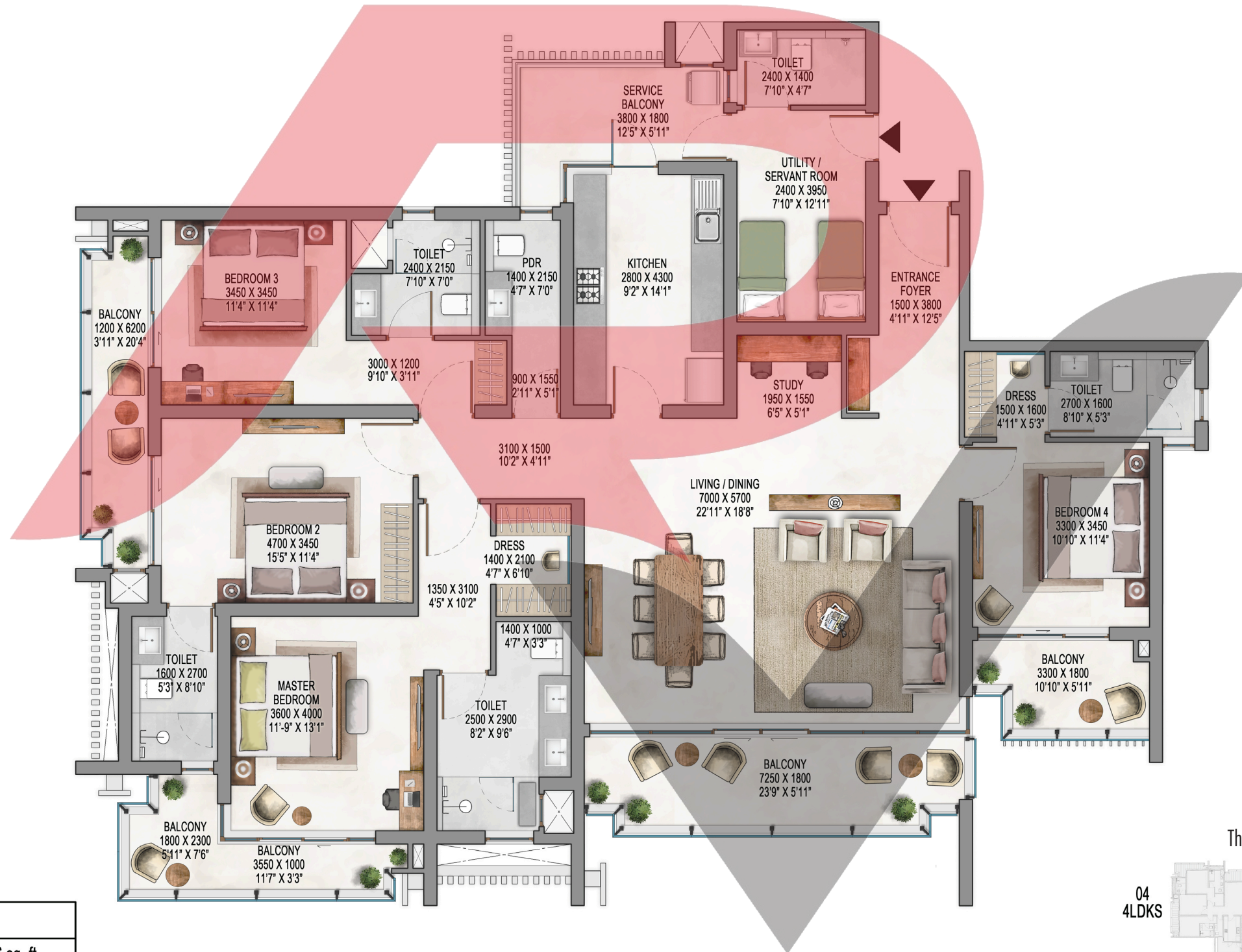
Waterside Residences - The Forest Reserve A - 4LDKS Typical



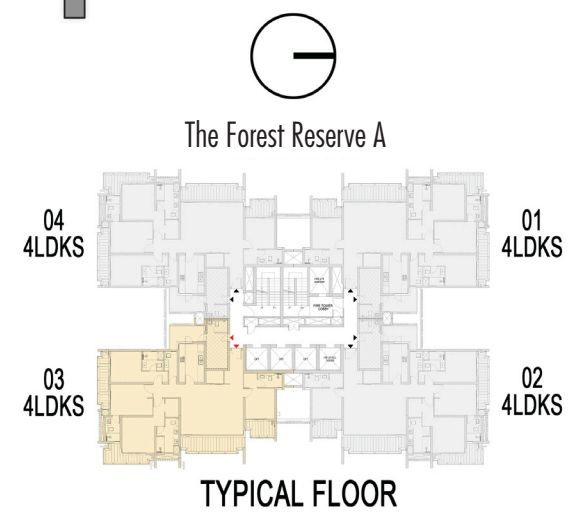
UNIT - 4LDK+SERVANT (TYPICAL FLOOR)		
CARPET AREA	185.47 sq. mt.	1,996 sq. ft.
EXCLUSIVE AREA	244.79 sq. mt.	2,635 sq. ft.
SALEABLE AREA	337.22 sq. mt.	3,630 sq. ft.



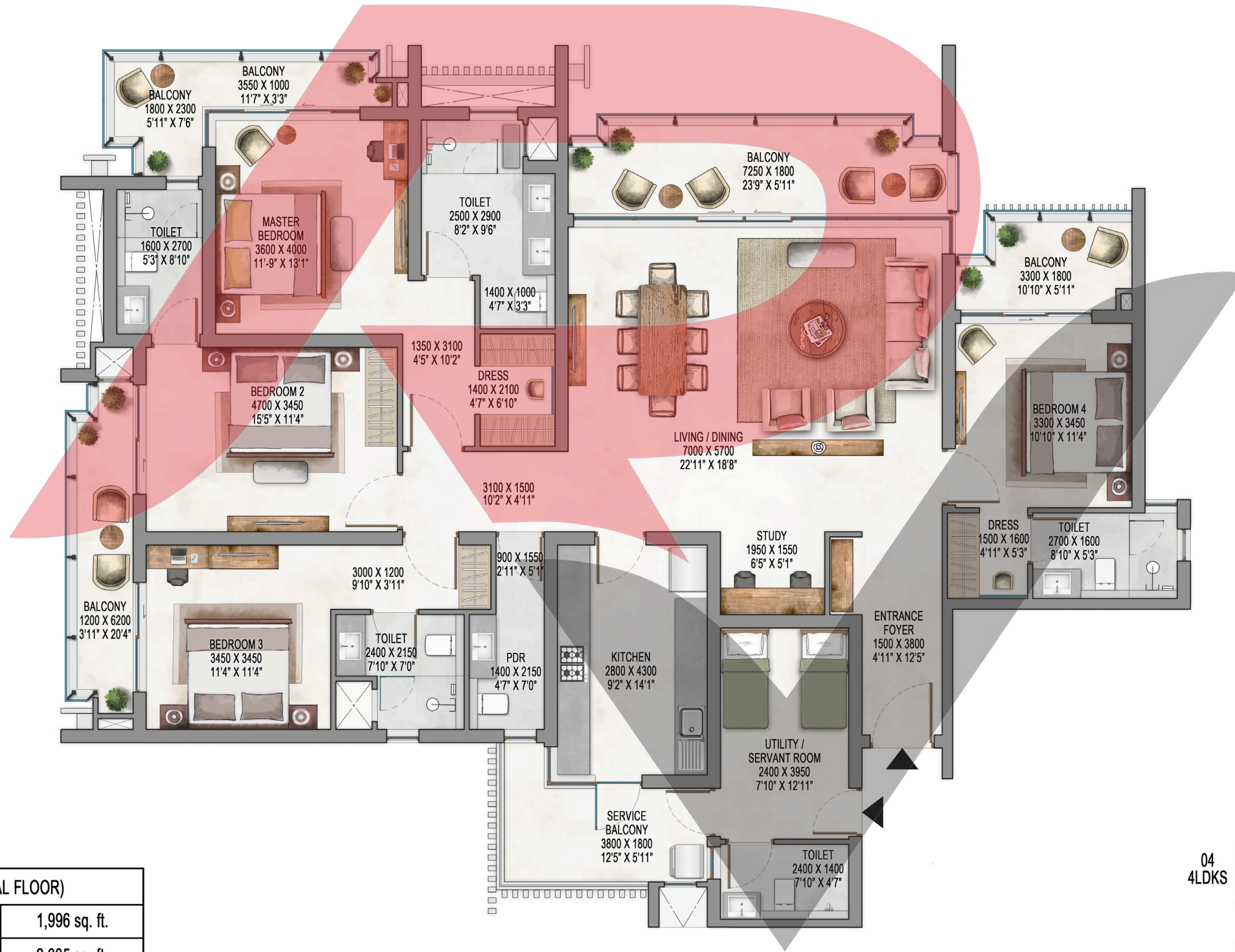
Waterside Residences - The Forest Reserve A - 4LDKS Typical



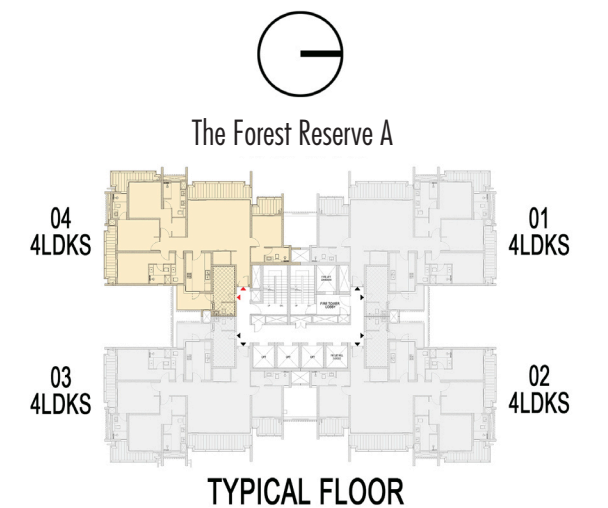
UNIT - 4LDK+SERVANT (TYPICAL FLOOR)		
CARPET AREA	185.47 sq. mt.	1,996 sq. ft.
EXCLUSIVE AREA	244.79 sq. mt.	2,635 sq. ft.
SALEABLE AREA	337.22 sq. mt.	3,630 sq. ft.



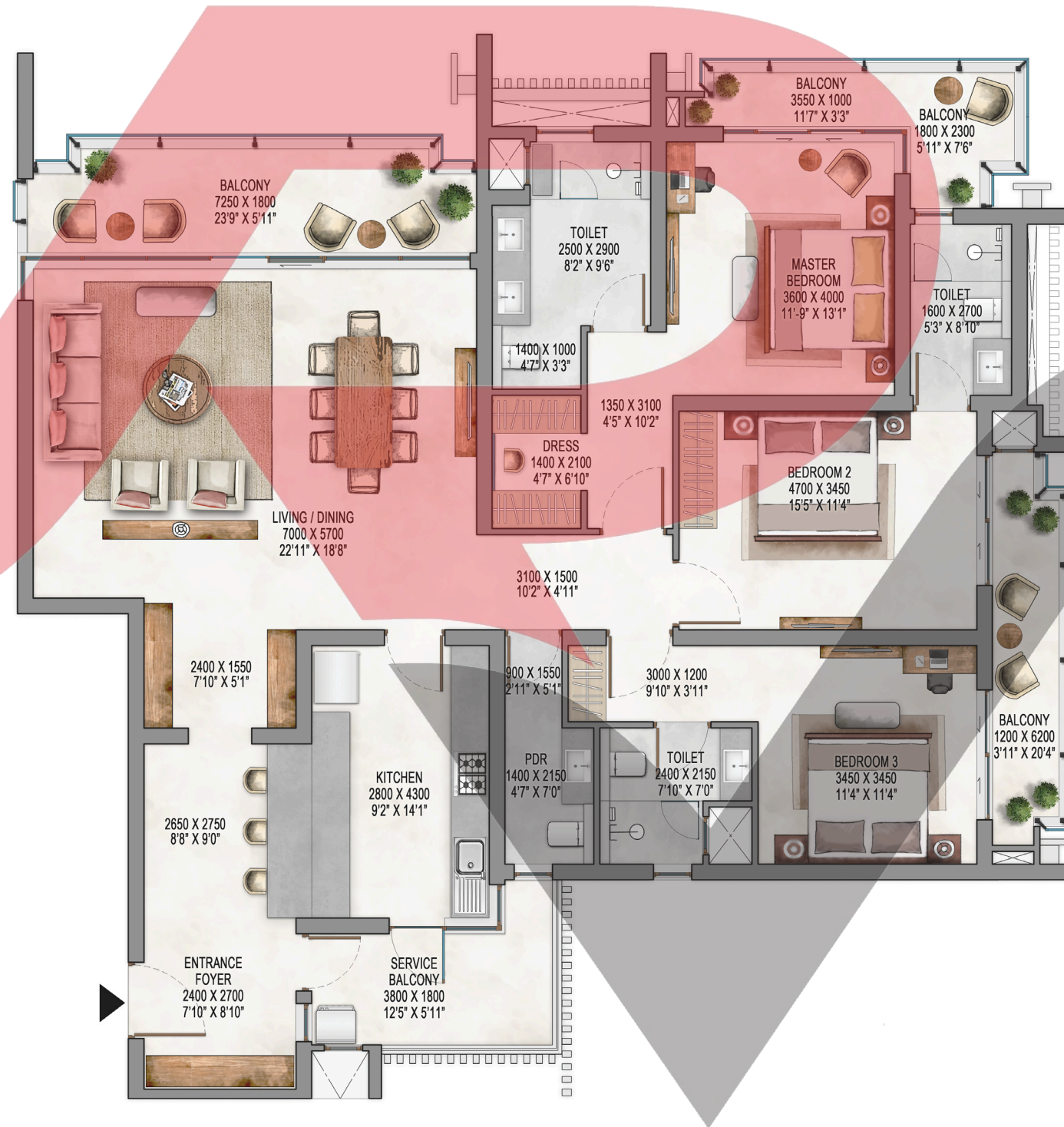
Waterside Residences - The Forest Reserve A - 4LDKS Typical



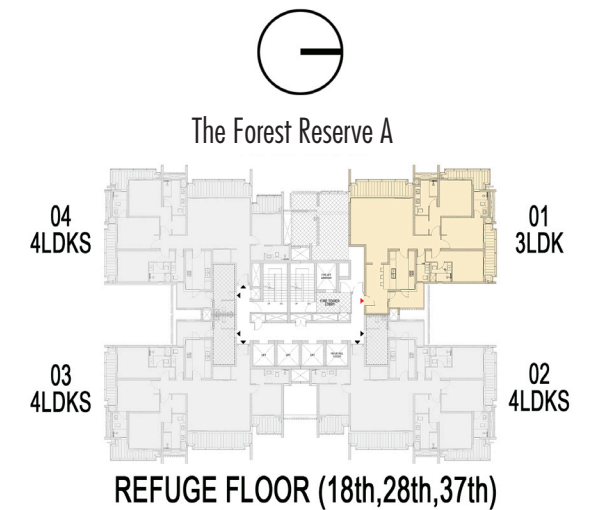
UNIT - 4LDK+SERVANT (TYPICAL FLOOR)		
CARPET AREA	185.47 sq. mt.	1,996 sq. ft.
EXCLUSIVE AREA	244.79 sq. mt.	2,635 sq. ft.
SALEABLE AREA	337.22 sq. mt.	3,630 sq. ft.



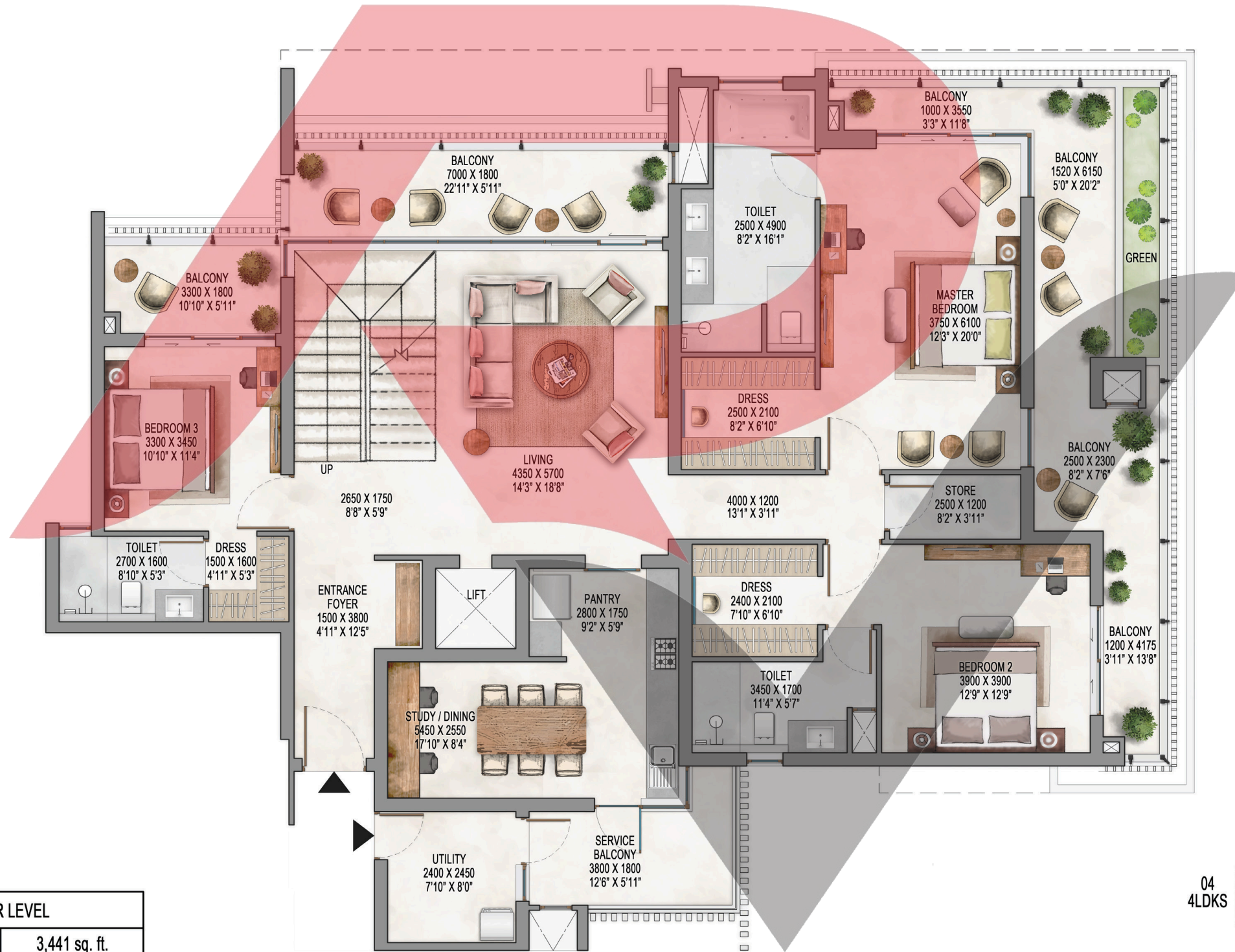
Waterside Residences - The Forest Reserve A - 3LDK Refuge



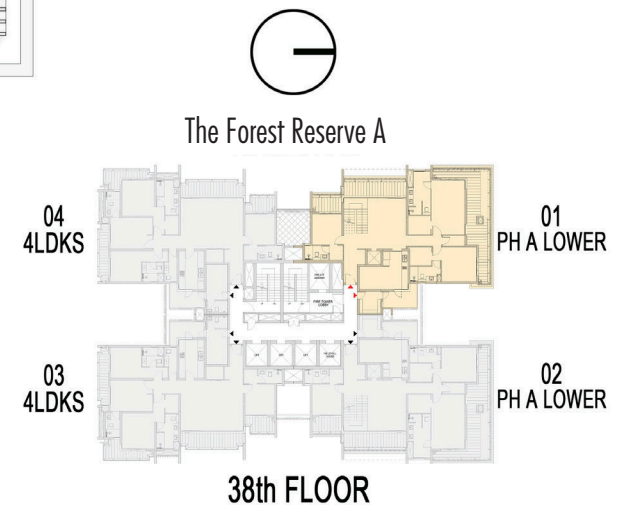
UNIT - 3LDK (REFUGE FLOOR)		
CARPET AREA	158.35 sq. mt.	1,704 sq. ft.
EXCLUSIVE AREA	209.40 sq. mt.	2,254 sq. ft.
SALEABLE AREA	287.91 sq. mt.	3,099 sq. ft.



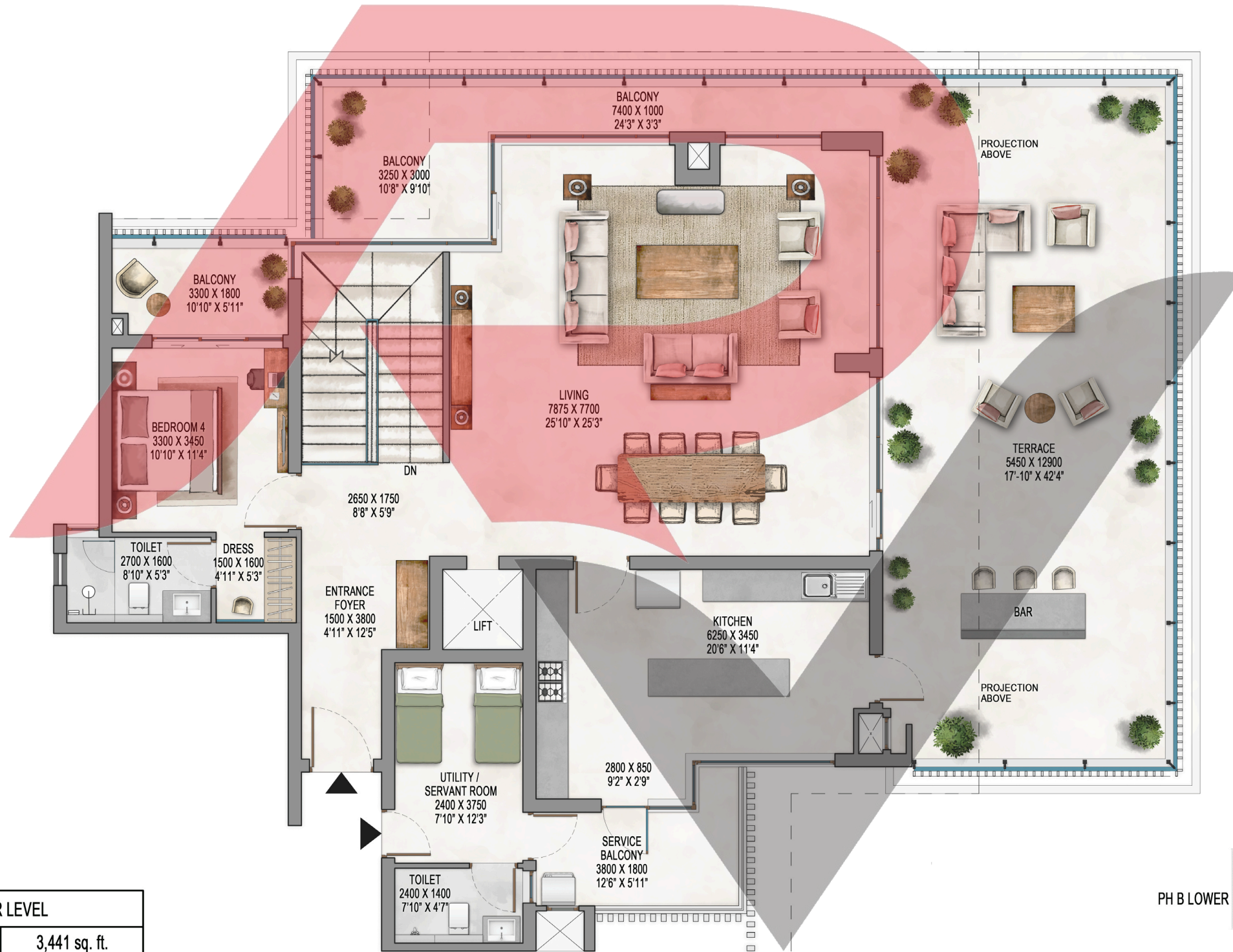
Waterside Residences - The Forest Reserve A - Penthouse A Lower Level



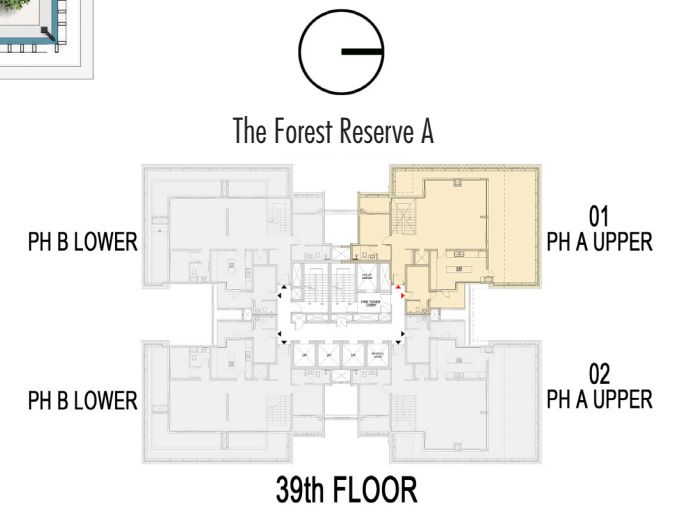
UNIT - PENTHOUSE A LOWER LEVEL		
CARPET AREA	319.72 sq. mt.	3,441 sq. ft.
EXCLUSIVE AREA	515.17 sq. mt.	5,545 sq. ft.
SALEABLE AREA	639.44 sq. mt.	6,883 sq. ft.



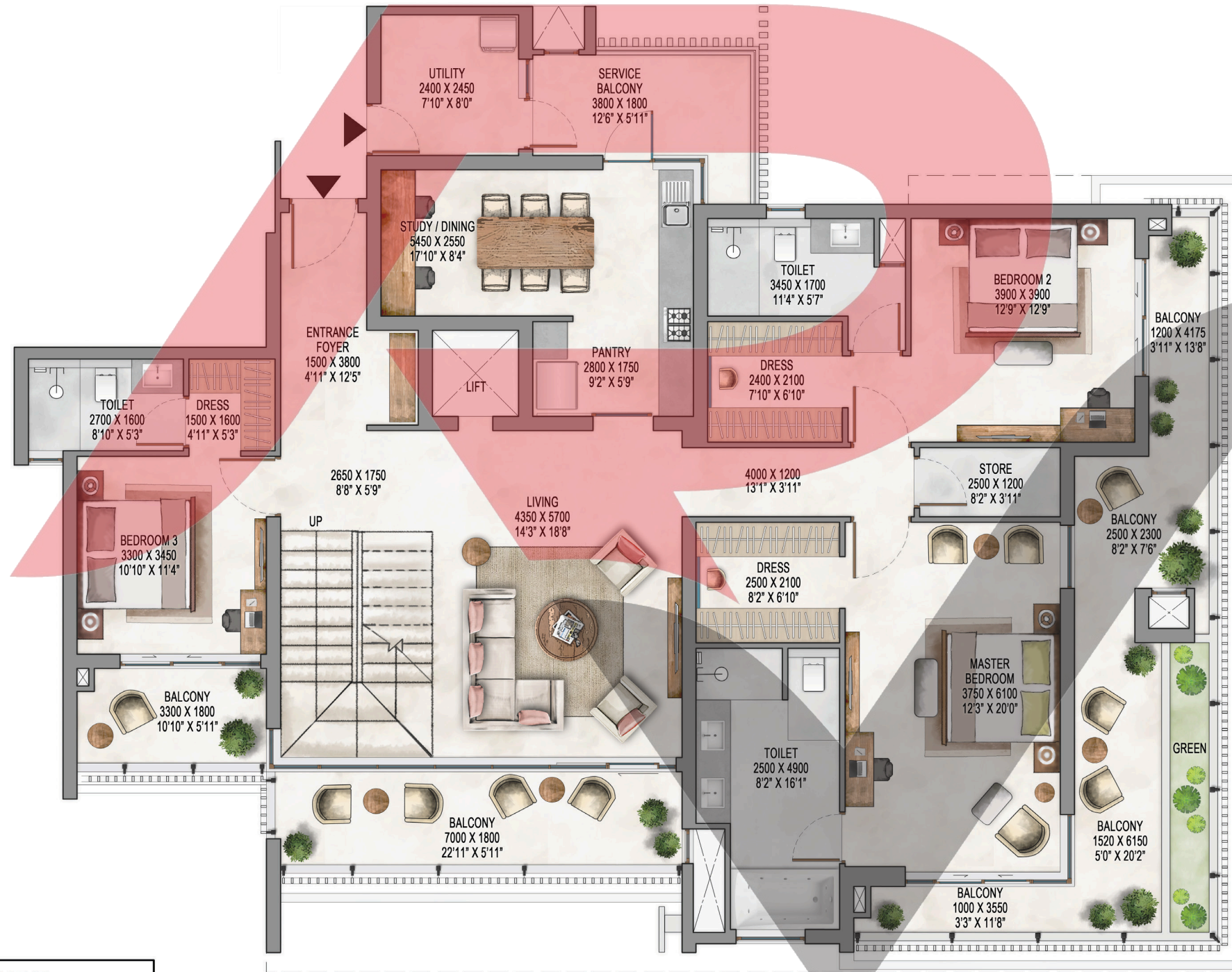
Waterside Residences - The Forest Reserve A - Penthouse A Upper Level



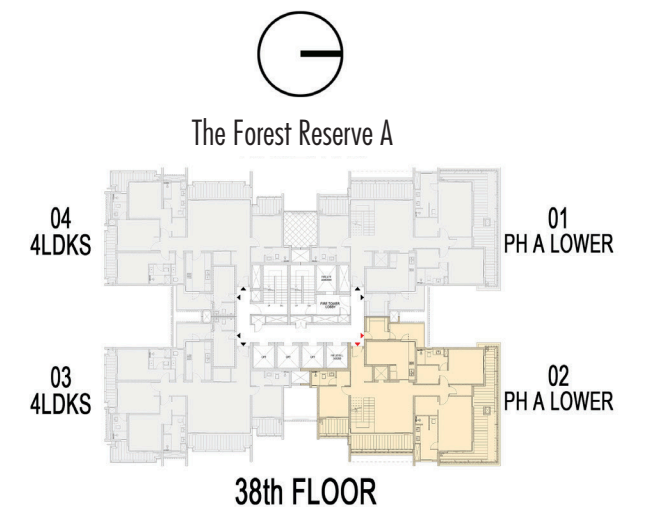
UNIT - PENTHOUSE A UPPER LEVEL		
CARPET AREA	319.72 sq. mt.	3,441 sq. ft.
EXCLUSIVE AREA	515.17 sq. mt.	5,545 sq. ft.
SALEABLE AREA	639.44 sq. mt.	6,883 sq. ft.



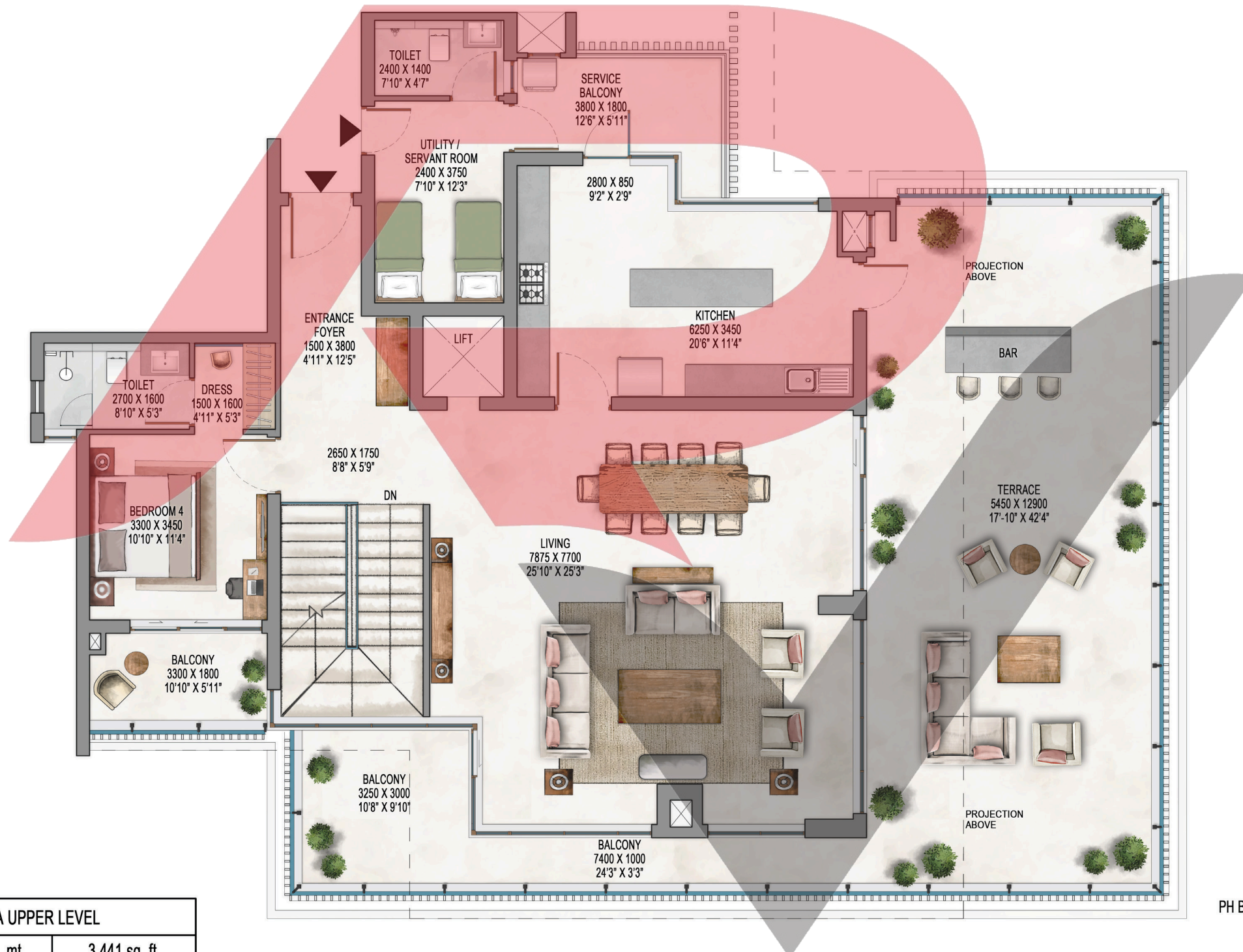
Waterside Residences - The Forest Reserve A - Penthouse A Lower Level



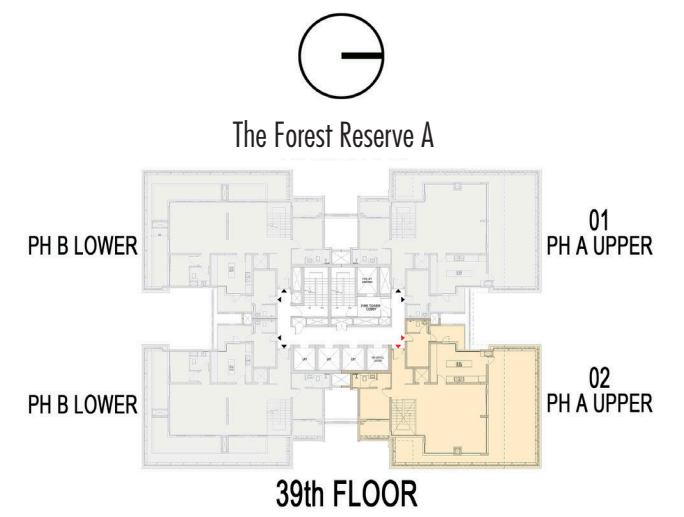
UNIT - PENTHOUSE A LOWER LEVEL		
CARPET AREA	319.72 sq. mt.	3,441 sq. ft.
EXCLUSIVE AREA	515.17 sq. mt.	5,545 sq. ft.
SALEABLE AREA	639.44 sq. mt.	6,883 sq. ft.



Waterside Residences - The Forest Reserve A - Penthouse A Upper Level



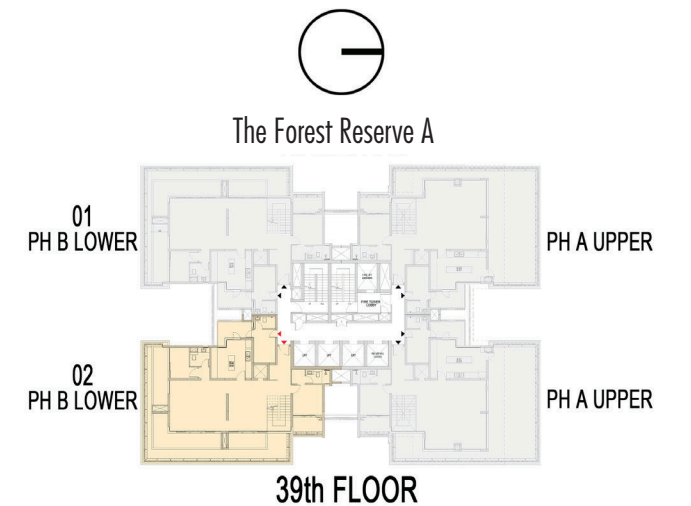
UNIT - PENTHOUSE A UPPER LEVEL		
CARPET AREA	319.72 sq. mt.	3,441 sq. ft.
EXCLUSIVE AREA	515.17 sq. mt.	5,545 sq. ft.
SALEABLE AREA	639.44 sq. mt.	6,883 sq. ft.



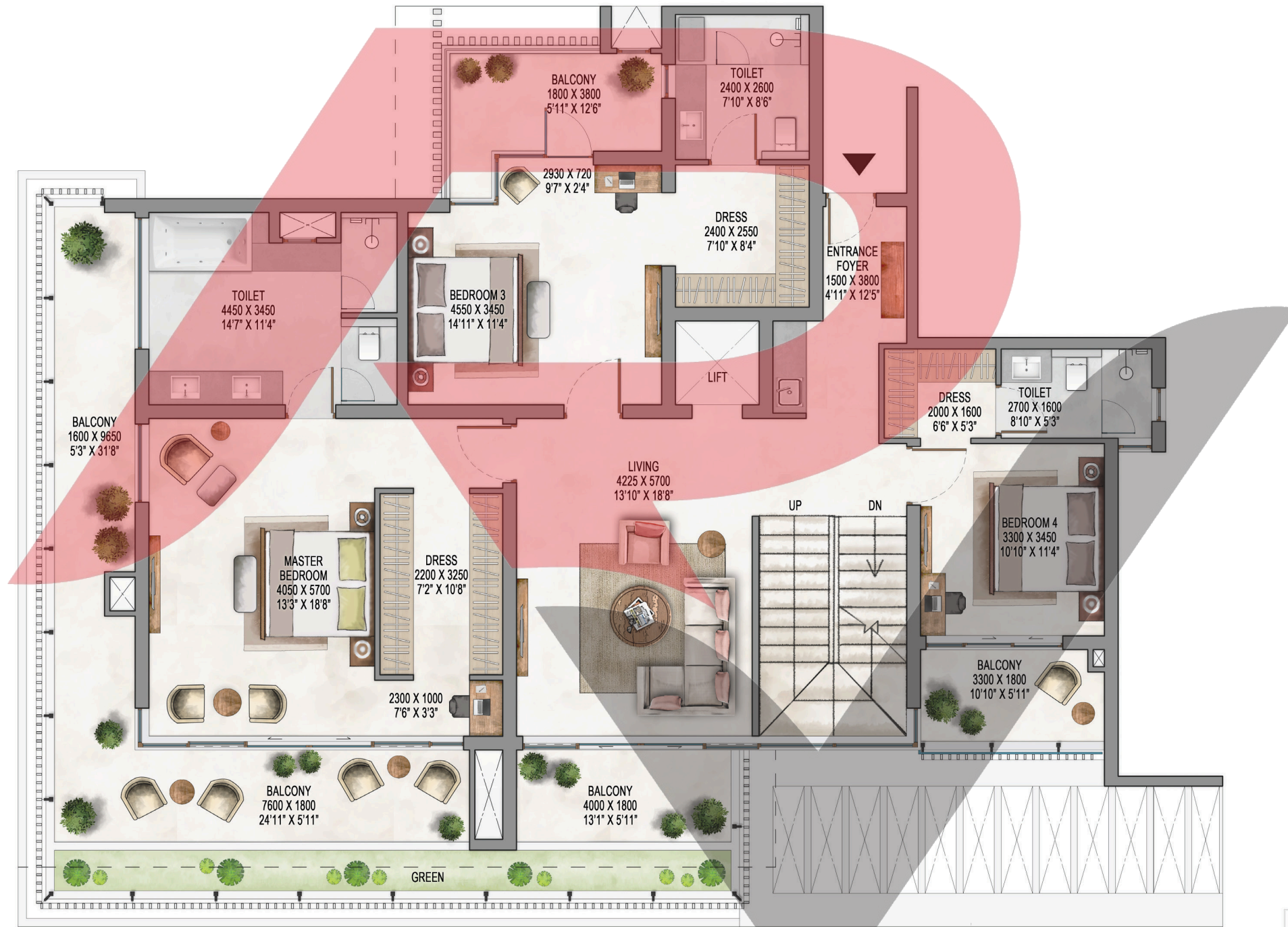
Waterside Residences - The Forest Reserve A - Penthouse B Lower Level



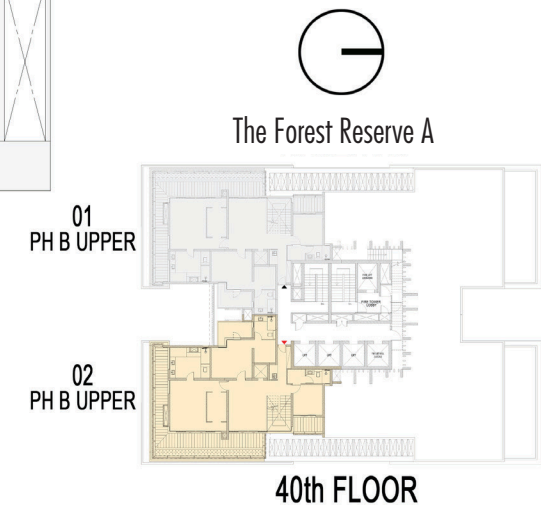
UNIT - PENTHOUSE B LOWER LEVEL		
CARPET AREA	351.86 sq. mt.	3,787 sq. ft.
EXCLUSIVE AREA	676.38 sq. mt.	7,280 sq. ft.
SALEABLE AREA	703.72 sq. mt.	7,575 sq. ft.



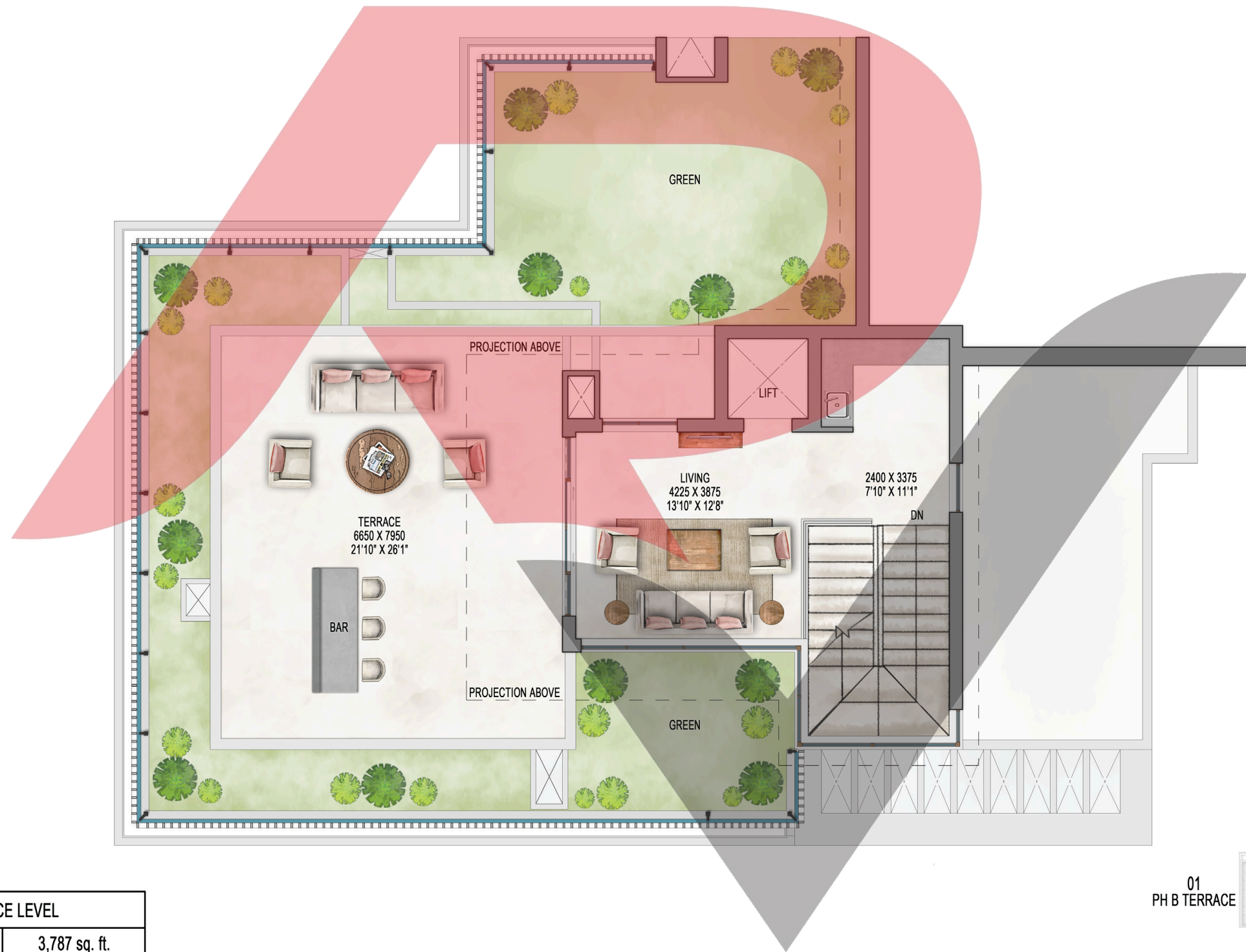
Waterside Residences - The Forest Reserve A - Penthouse B Upper Level



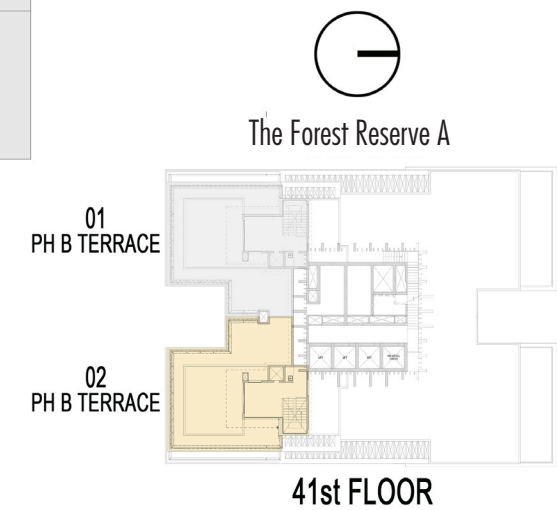
UNIT - PENTHOUSE B UPPER LEVEL		
CARPET AREA	351.86 sq. mt.	3,787 sq. ft.
EXCLUSIVE AREA	676.38 sq. mt.	7,280 sq. ft.
SALEABLE AREA	703.72 sq. mt.	7,575 sq. ft.



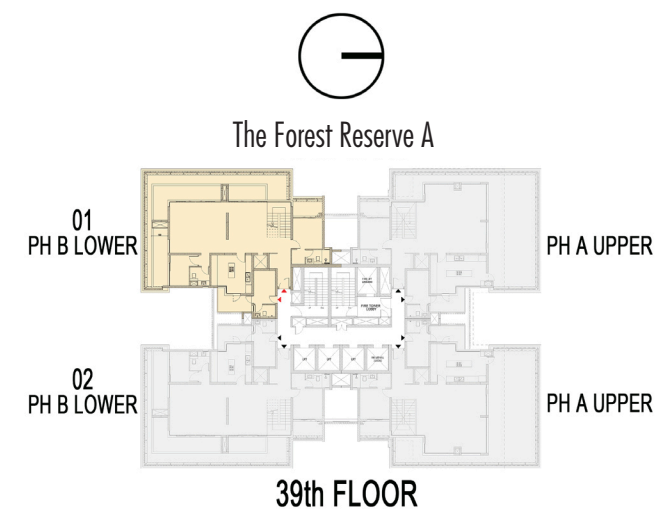
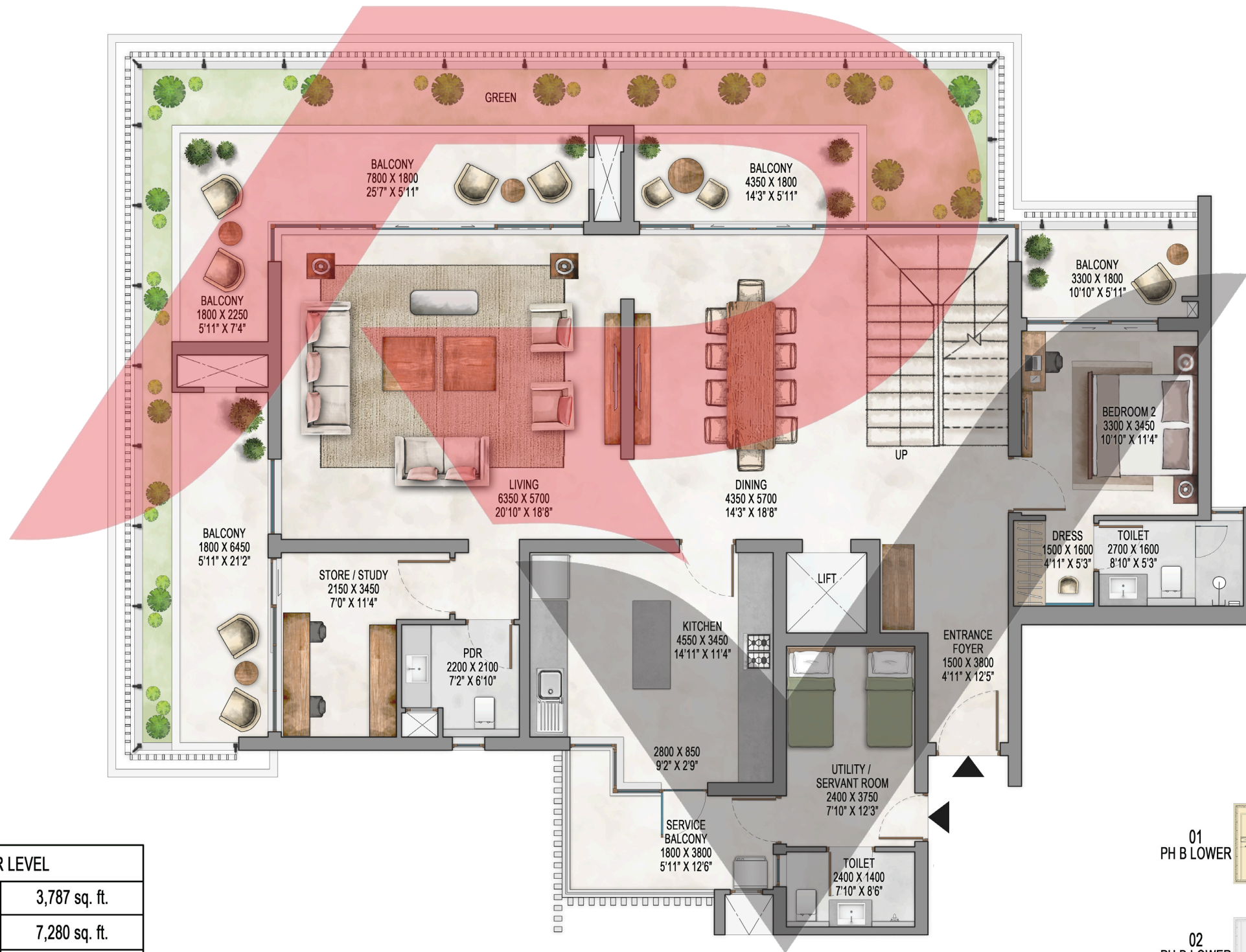
Waterside Residences - The Forest Reserve A - Penthouse B Terrace Level



UNIT - PENTHOUSE B TERRACE LEVEL		
CARPET AREA	351.86 sq. mt.	3,787 sq. ft.
EXCLUSIVE AREA	676.38 sq. mt.	7,280 sq. ft.
SALEABLE AREA	703.72 sq. mt.	7,575 sq. ft.



Waterside Residences - The Forest Reserve A - Penthouse B Lower Level

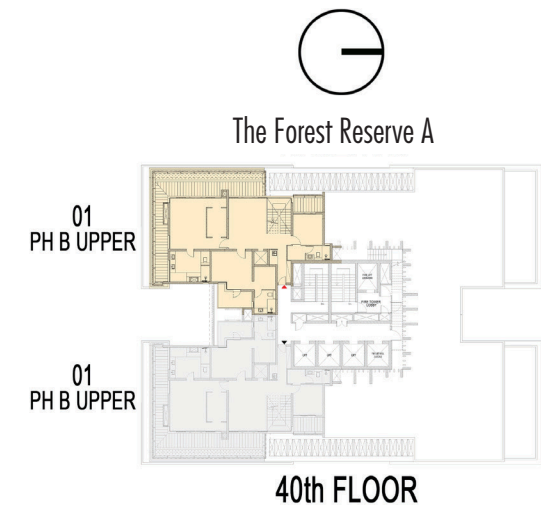


UNIT - PENTHOUSE B LOWER LEVEL		
CARPET AREA	351.86 sq. mt.	3,787 sq. ft.
EXCLUSIVE AREA	676.38 sq. mt.	7,280 sq. ft.
SALEABLE AREA	703.72 sq. mt.	7,575 sq. ft.

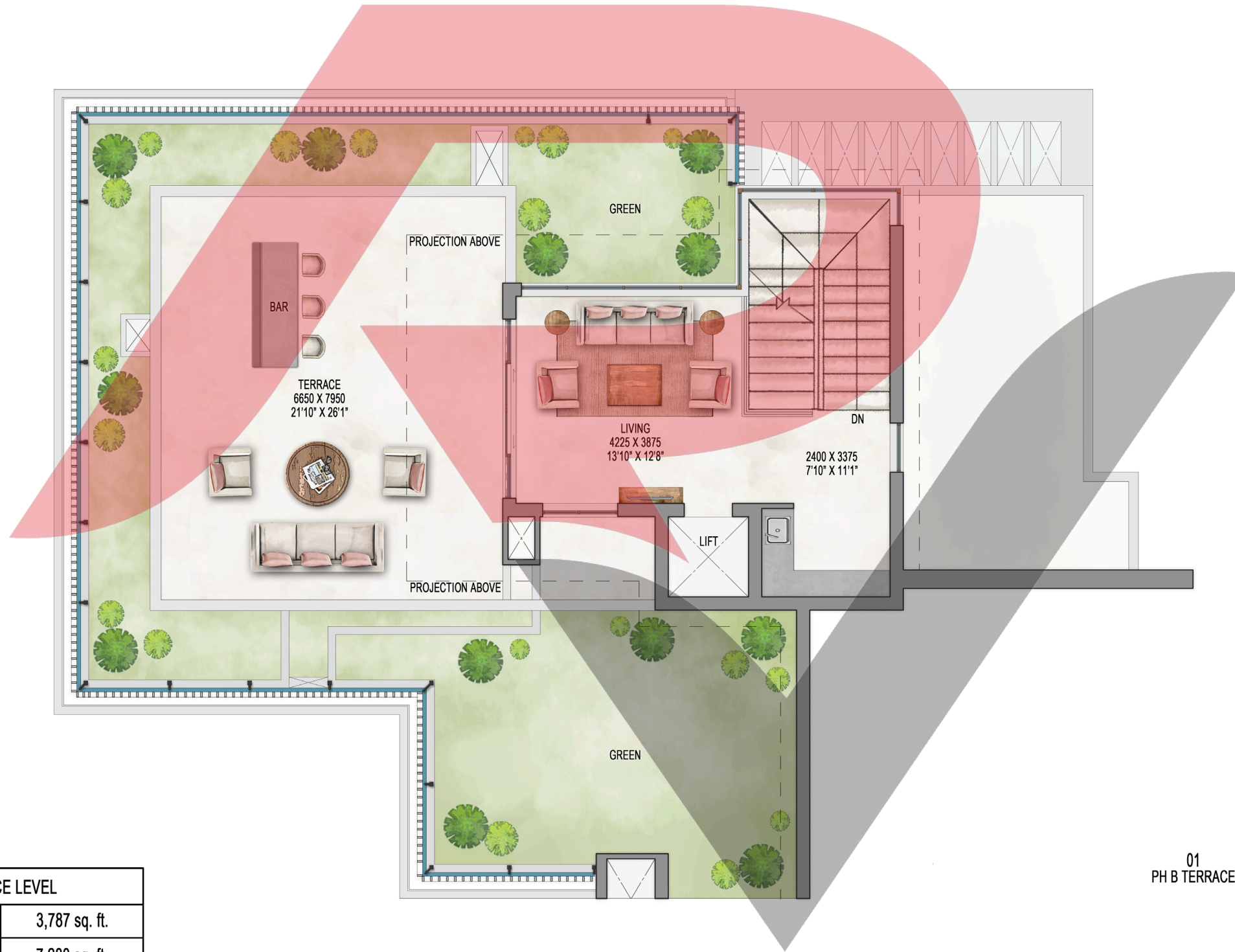
Waterside Residences - The Forest Reserve A - Penthouse B Upper Level



UNIT - PENTHOUSE B UPPER LEVEL		
CARPET AREA	351.86 sq. mt.	3,787 sq. ft.
EXCLUSIVE AREA	676.38 sq. mt.	7,280 sq. ft.
SALEABLE AREA	703.72 sq. mt.	7,575 sq. ft.



Waterside Residences - The Forest Reserve A - Penthouse B Terrace Level



UNIT - PENTHOUSE B TERRACE LEVEL		
CARPET AREA	351.86 sq. mt.	3,787 sq. ft.
EXCLUSIVE AREA	676.38 sq. mt.	7,280 sq. ft.
SALEABLE AREA	703.72 sq. mt.	7,575 sq. ft.

