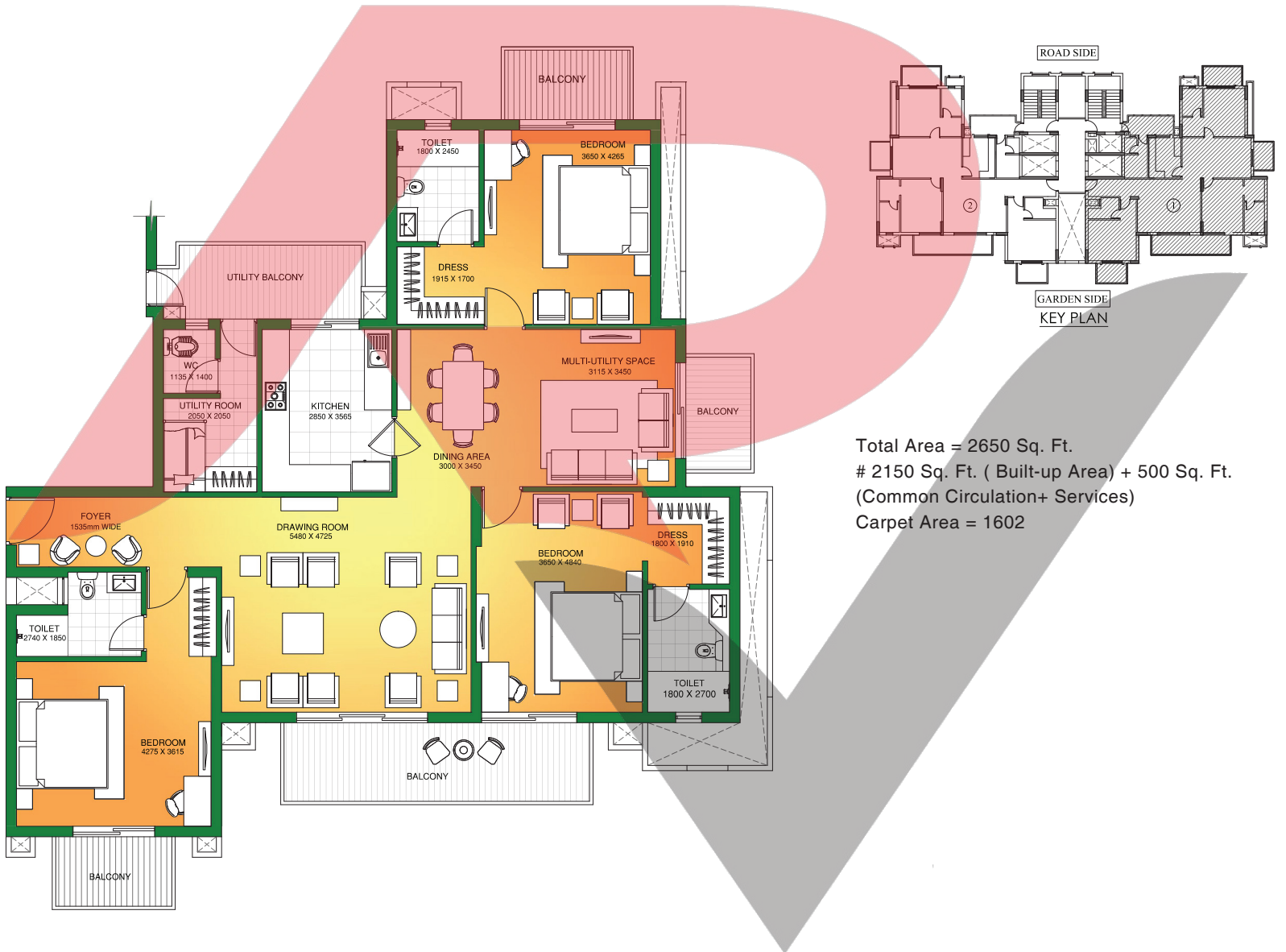


Type A 3 BHK + Lounge + Utility

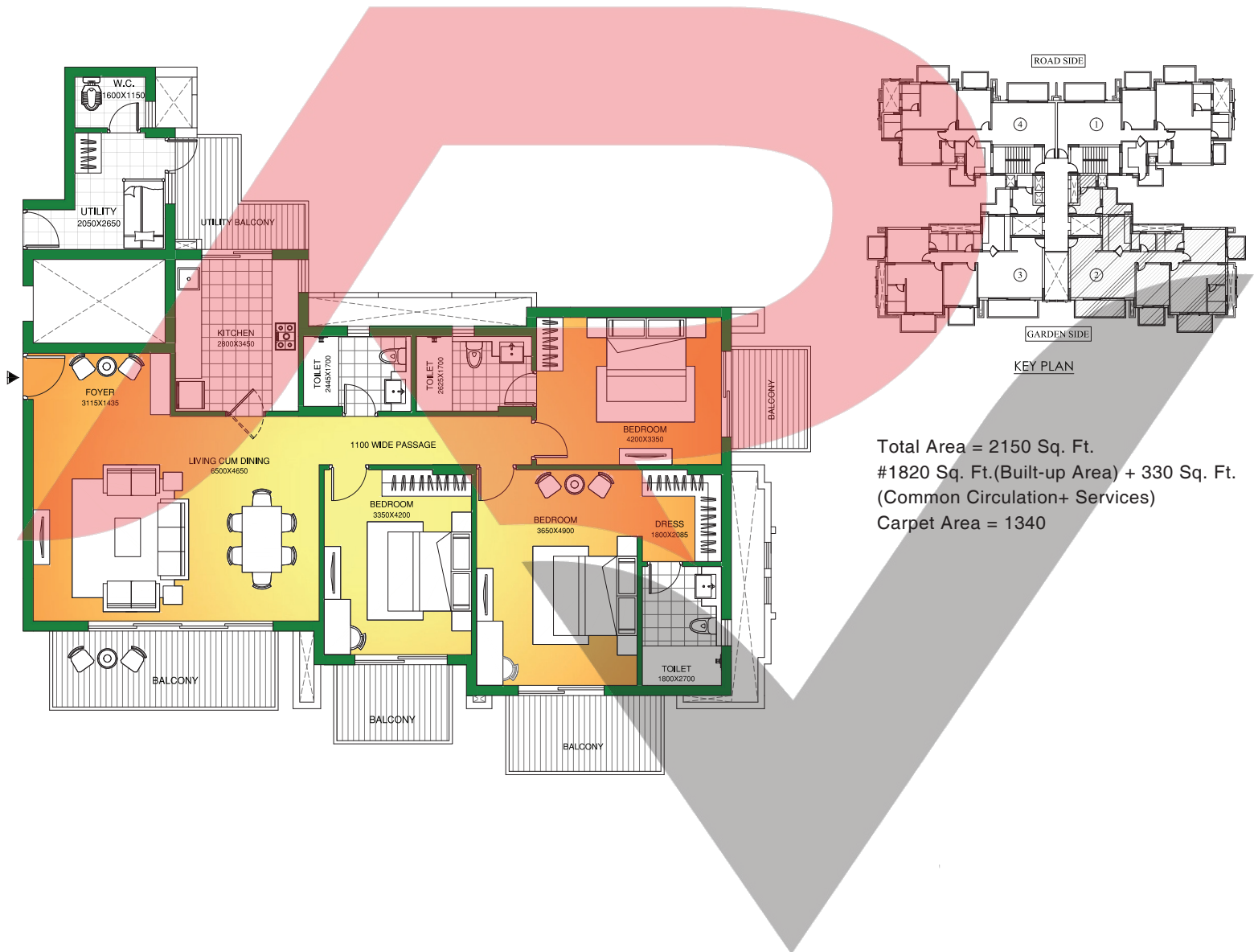


Total Area = 2650 Sq. Ft.
 # 2150 Sq. Ft. (Built-up Area) + 500 Sq. Ft.
 (Common Circulation+ Services)
 Carpet Area = 1602

NOTE:

1. The window size/its location in rooms may change because of elevational features.
2. The overall layout may vary because of statutory reasons in case required.
3. Currently, no columns are shown in the plan which will be incorporated as per structure.
4. Each tower and apartment might have slight deviation to the layout, size and type and the picture herein depicts only typical floor plan, it is therefore recommended to verify the layout, size and type of your apartment prior to submission of application for Allotment of Apartment.

Type B 3 BHK + Utility

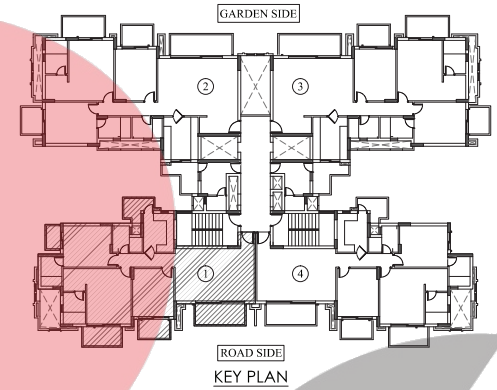
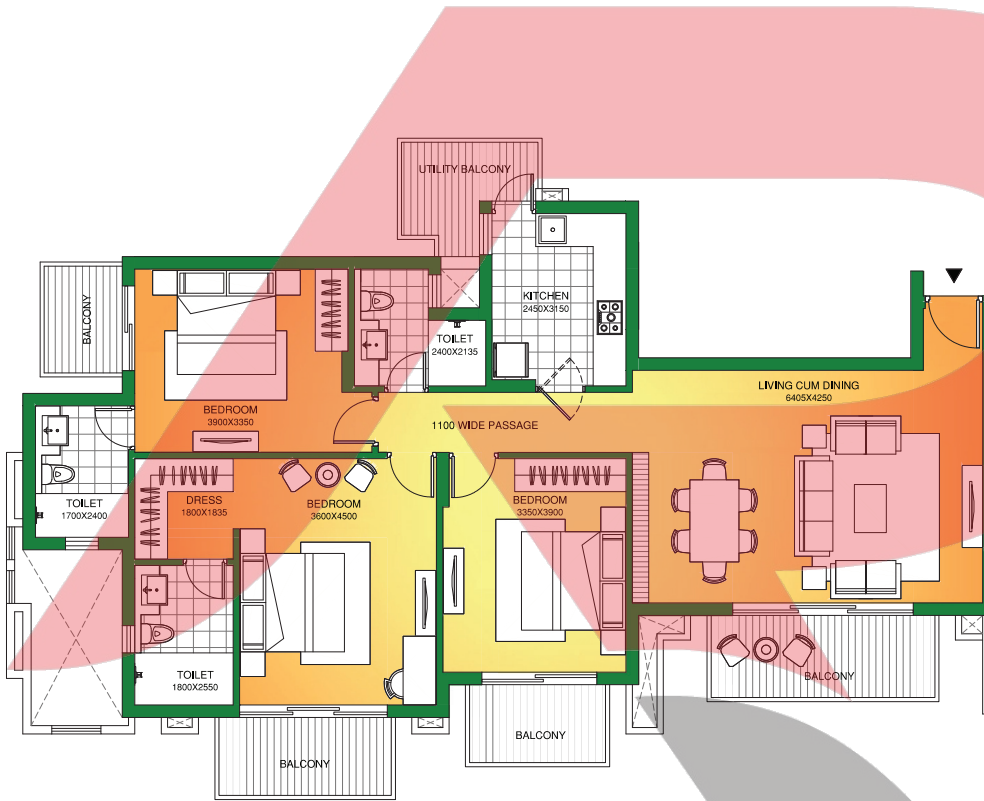


Total Area = 2150 Sq. Ft.
 #1820 Sq. Ft. (Built-up Area) + 330 Sq. Ft. (Common Circulation+ Services)
 Carpet Area = 1340

NOTE:

1. The window size/its location in rooms may change because of elevational features.
2. The overall layout may vary because of statutory reasons in case required.
3. Currently, no columns are shown in the plan which will be incorporated as per structure.
4. Each tower and apartment might have slight deviation to the layout, size and type and the picture herein depicts only typical floor plan, it is therefore recommended to verify the layout, size and type of your apartment prior to submission of application for Allotment of Apartment.

Type C 3 BHK + Utility



Total Area = 1750 Sq. Ft.
 # 1480 Sq. Ft. (Built-up Area) + 270 Sq. Ft.
 (Common Circulation+ Services)
 Carpet Area = 1117

NOTE:

1. The window size/its location in rooms may change because of elevational features.
2. The overall layout may vary because of statutory reasons in case required.
3. Currently, no columns are shown in the plan which will be incorporated as per structure.
4. Each tower and apartment might have slight deviation to the layout, size and type and the picture herein depicts only typical floor plan, it is therefore recommended to verify the layout, size and type of your apartment prior to submission of application for Allotment of Apartment.