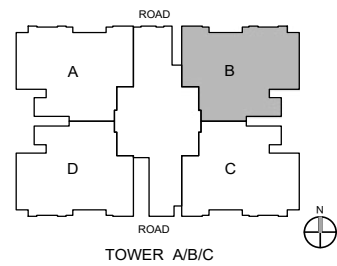
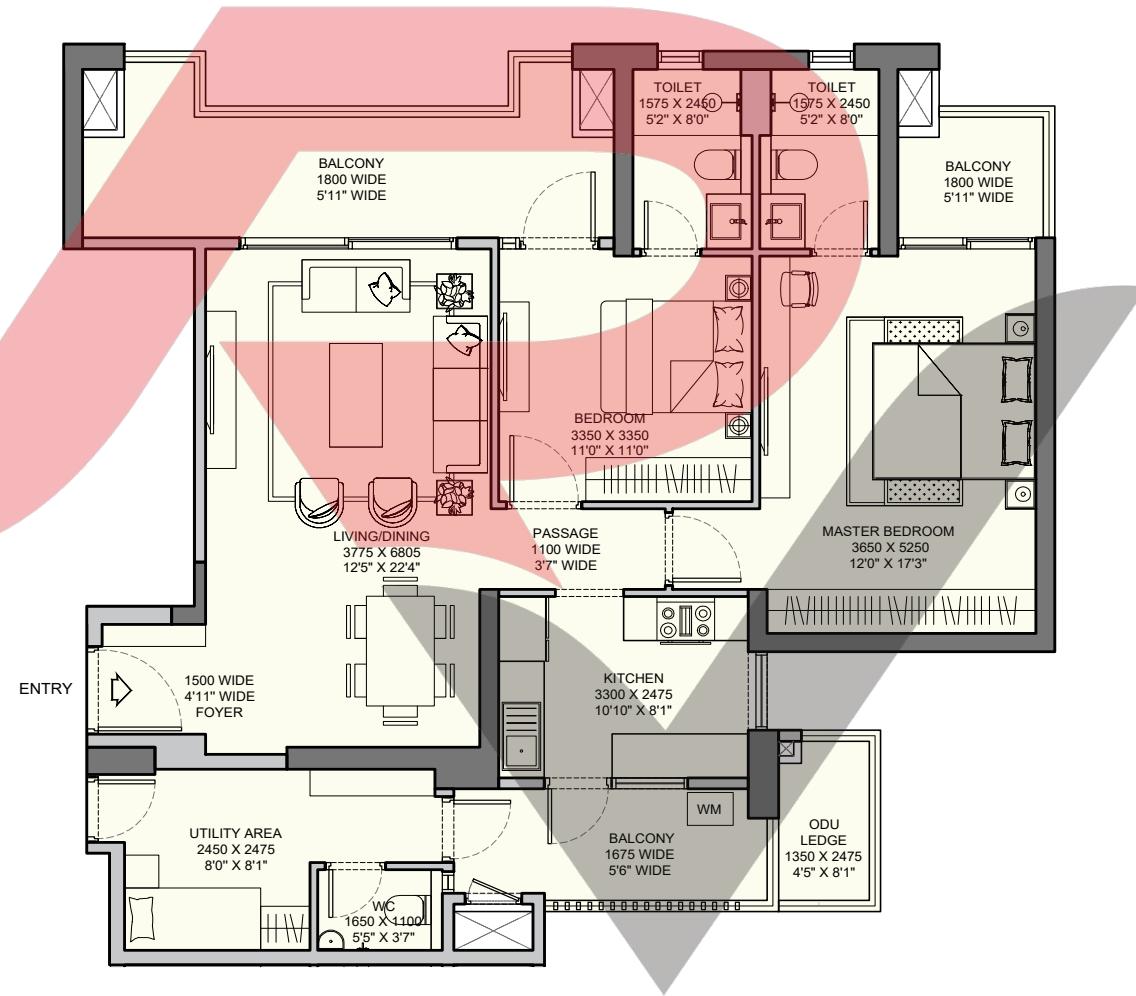


UNIT PLANS

2BHK+ 2T+U-T (TYPE A)

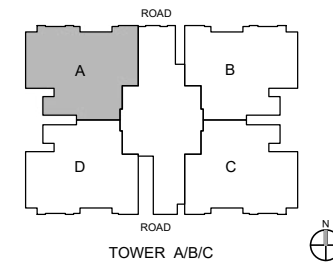
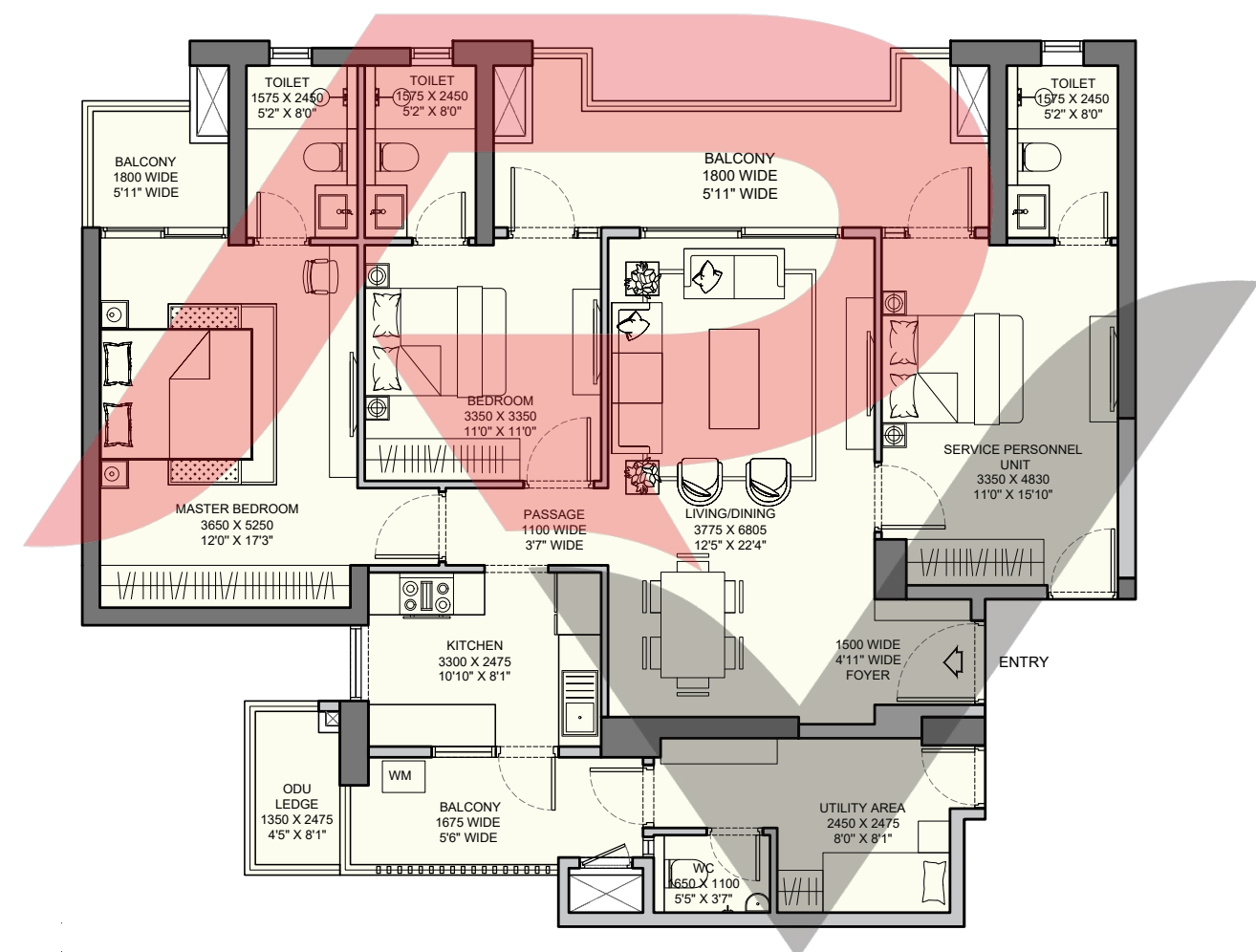
Carpet Area : 93.030 sq.mtr./1001.37 sq.ft.
 Balcony Area : 23.860 sq.mtr./256.83 sq.ft.
 ODU Ledge Area : 3.341 sq.mtr./35.96 sq.ft.



Note: The floor plans, layout plans, areas, dimensions and specifications mentioned herein above are for reference purpose only. The same are subject to revision in compliance with applicable law. All the given dimensions are from masonry to masonry. 1 sq.m. = 10.764 sq.ft.

3BHK+ 3T+U-T (TYPE A)*

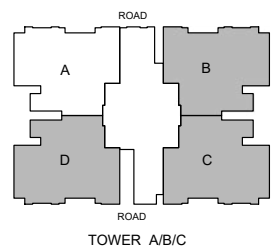
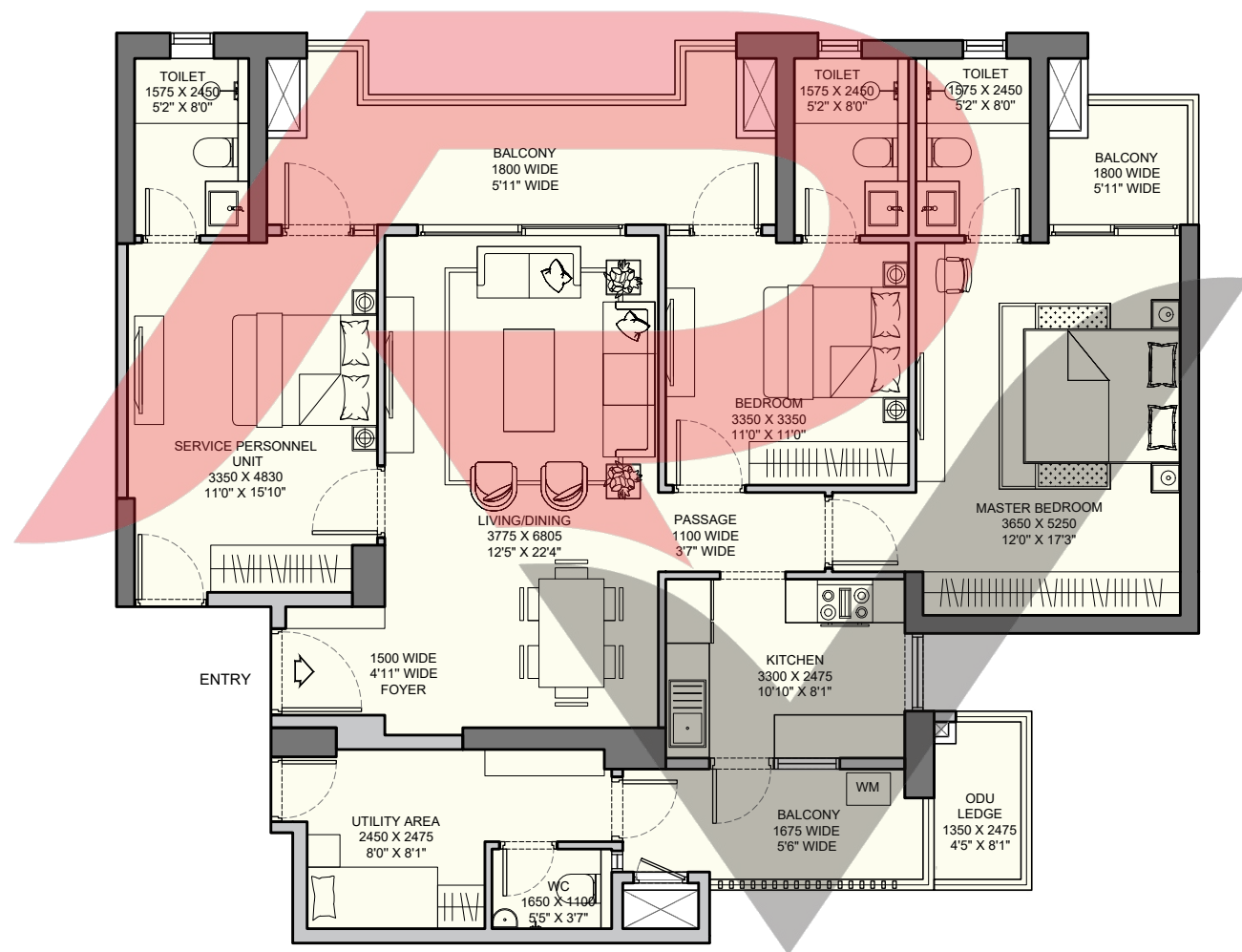
Carpet Area : 114.154 sq.mtr./1228.75 sq.ft.
 Balcony Area : 23.860 sq.mtr./256.83 sq.ft.
 ODU Ledge Area : 3.341 sq.mtr./35.96 sq.ft.



Note: *Room usage as per the approved building plan.
 The floor plans, layout plans, areas, dimensions and specifications mentioned herein above are for reference purpose only. The same are subject to revision in compliance with applicable law. All the given dimensions are from masonry to masonry. 1 sq.m. = 10.764 sq.ft.

3BHK+ 3T+U-T (TYPE B)*

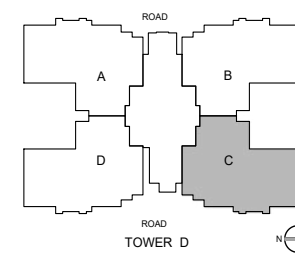
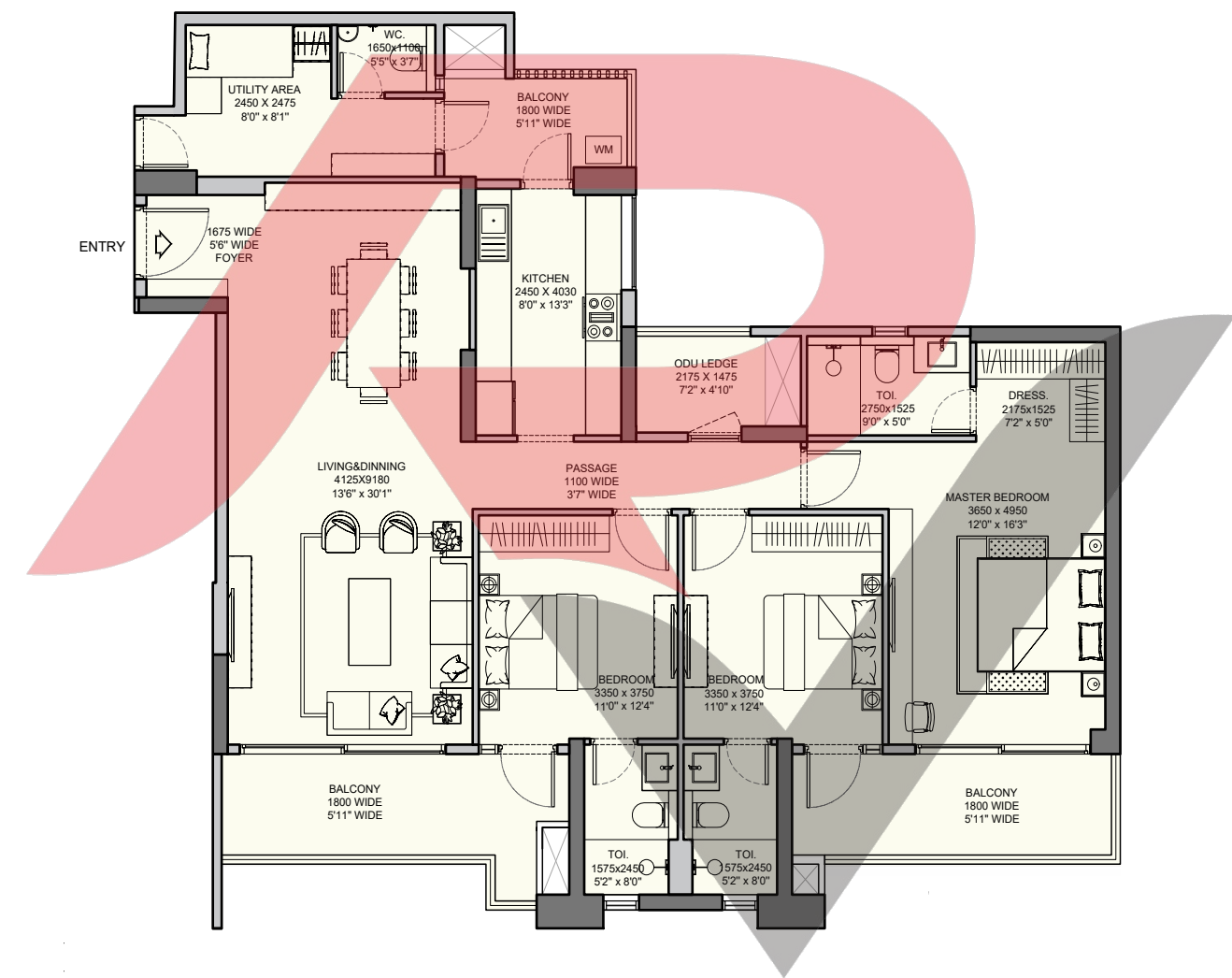
Carpet Area : 114.500 sq.mtr./1232.48 sq.ft.
 Balcony Area : 23.860 sq.mtr./256.83 sq.ft.
 ODU Ledge Area : 3.341 sq.mtr./35.96 sq.ft.



Note: *Room usage as per the approved building plan.
 The floor plans, layout plans, areas, dimensions and specifications mentioned herein above are for reference purpose only. The same are subject to revision in compliance with applicable law. All the given dimensions are from masonry to masonry. 1 sq.m. = 10.764 sq.ft.

3BHK+ 3T+U-T (TYPE C)

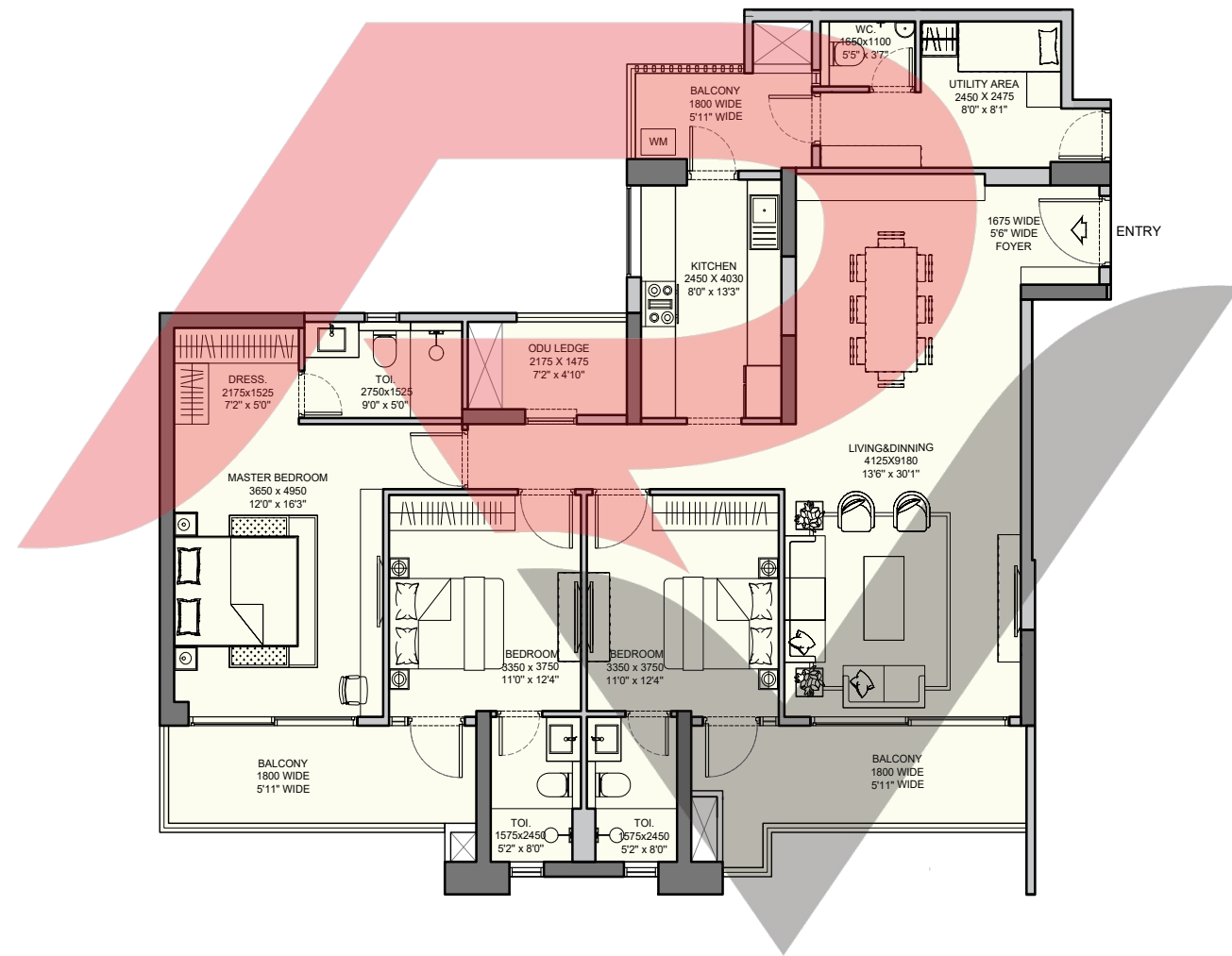
Carpet Area : 131.380 sq.mtr./1414.17 sq.ft.
 Balcony Area : 26.345 sq.mtr./283.58 sq.ft.
 ODU Ledge Area : 3.305 sq.mtr./35.58 sq.ft.



Note: The floor plans, layout plans, areas, dimensions and specifications mentioned herein above are for reference purpose only. The same are subject to revision in compliance with applicable law. All the given dimensions are from masonry to masonry. 1 sq.m. = 10.764 sq.ft.

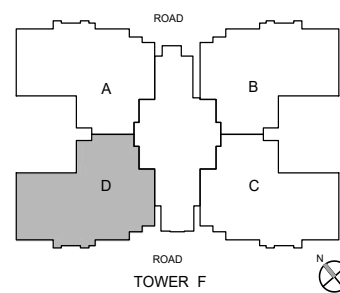
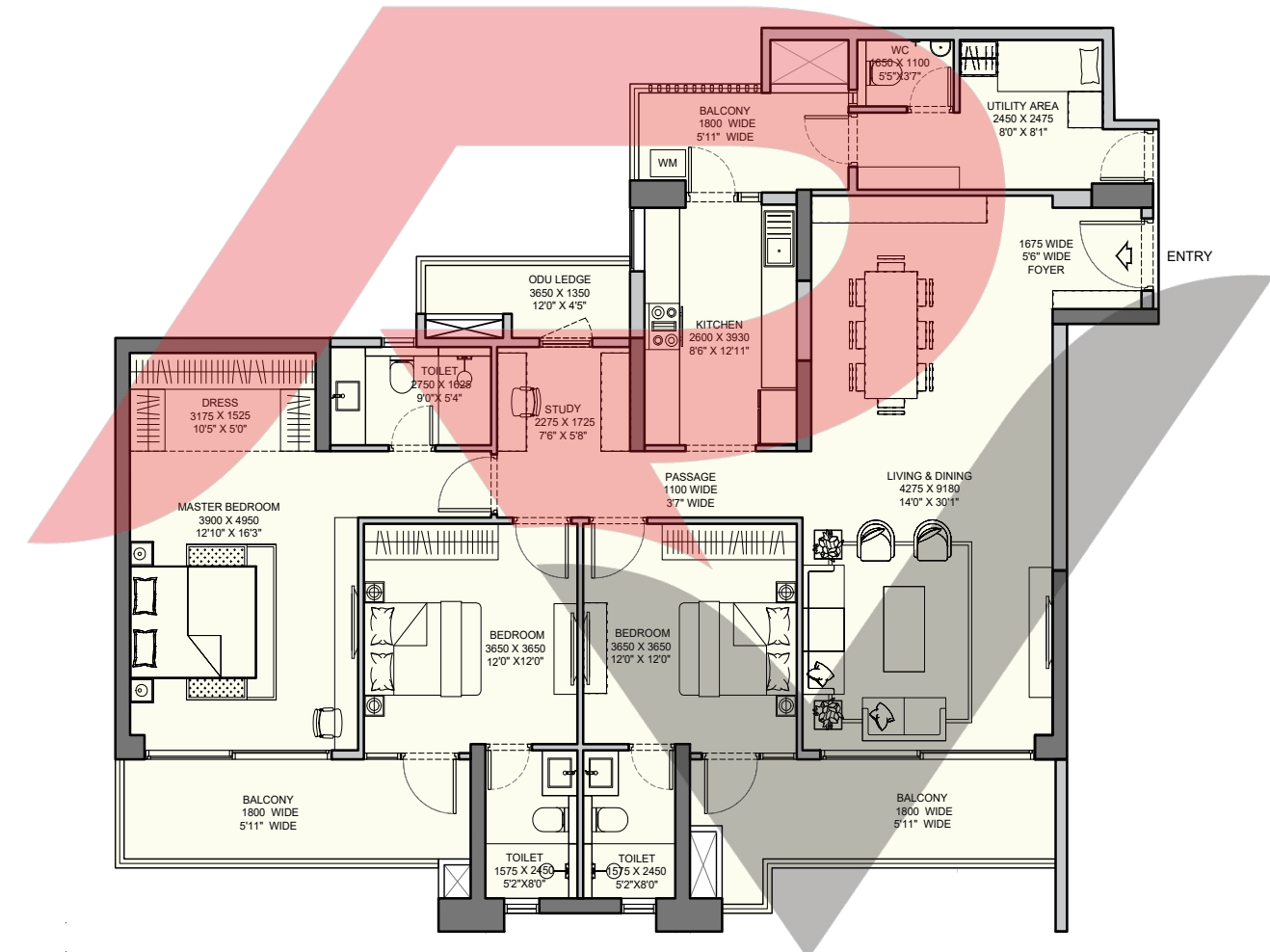
3BHK+ 3T+U-T (TYPE C)

Carpet Area : 131.380 sq.mtr./1414.17 sq.ft.
 Balcony Area : 26.345 sq.mtr./283.58 sq.ft.
 ODU Ledge Area : 3.305 sq.mtr./35.58 sq.ft.

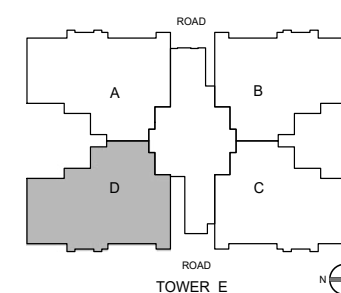


3BHK+ 3T+U-T (TYPE D)

Carpet Area : 144.371 sq.mtr./1554.01 sq.ft.
 Balcony Area : 28.921 sq.mtr./311.31 sq.ft.
 ODU Ledge Area : 4.275 sq.mtr./46.02 sq.ft.



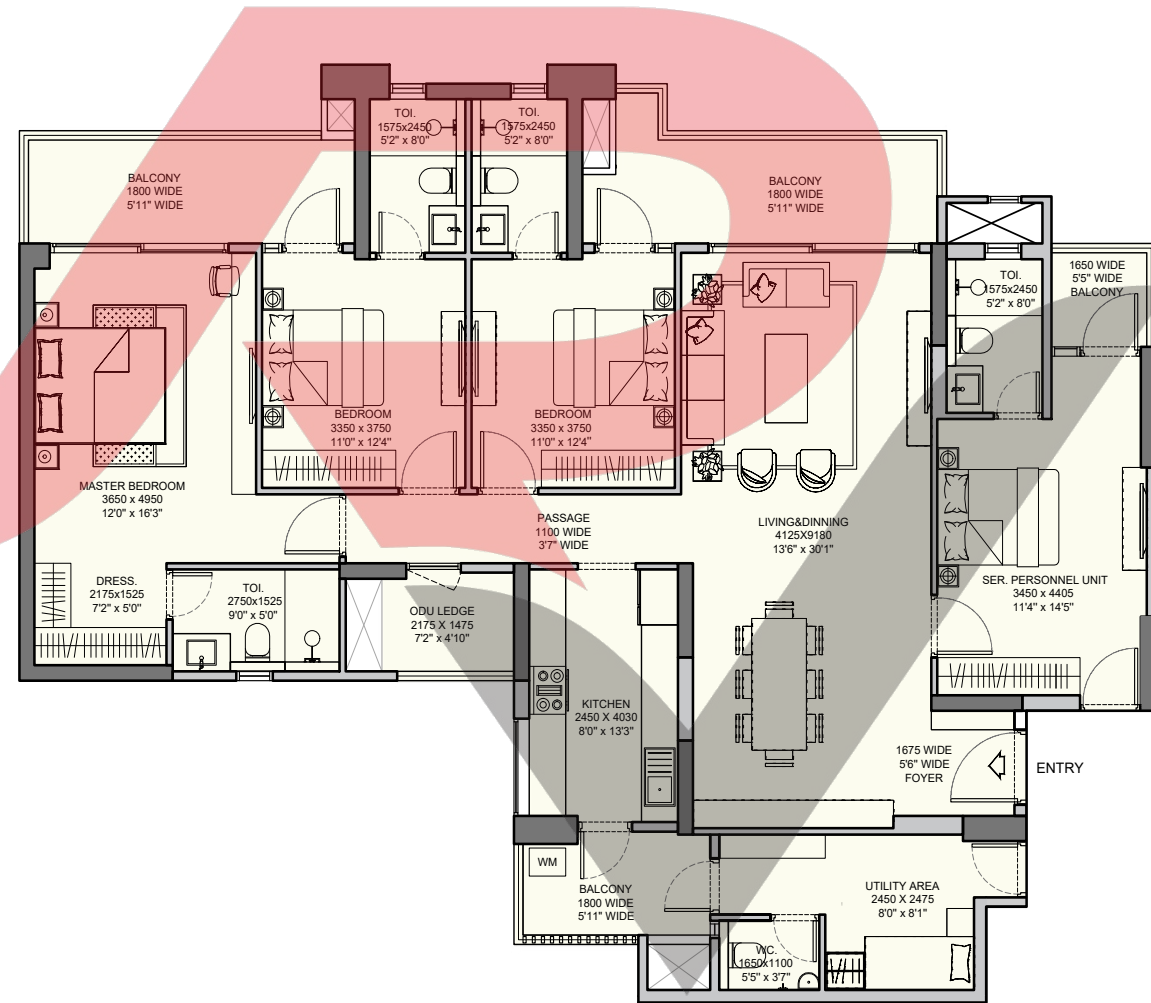
Note: The floor plans, layout plans, areas, dimensions and specifications mentioned herein above are for reference purpose only. The same are subject to revision in compliance with applicable law. All the given dimensions are from masonry to masonry. 1 sq.m. = 10.764 sq.ft.



Note: The floor plans, layout plans, areas, dimensions and specifications mentioned herein above are for reference purpose only. The same are subject to revision in compliance with applicable law. All the given dimensions are from masonry to masonry. 1 sq.m. = 10.764 sq.ft.

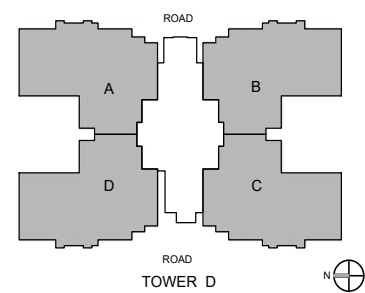
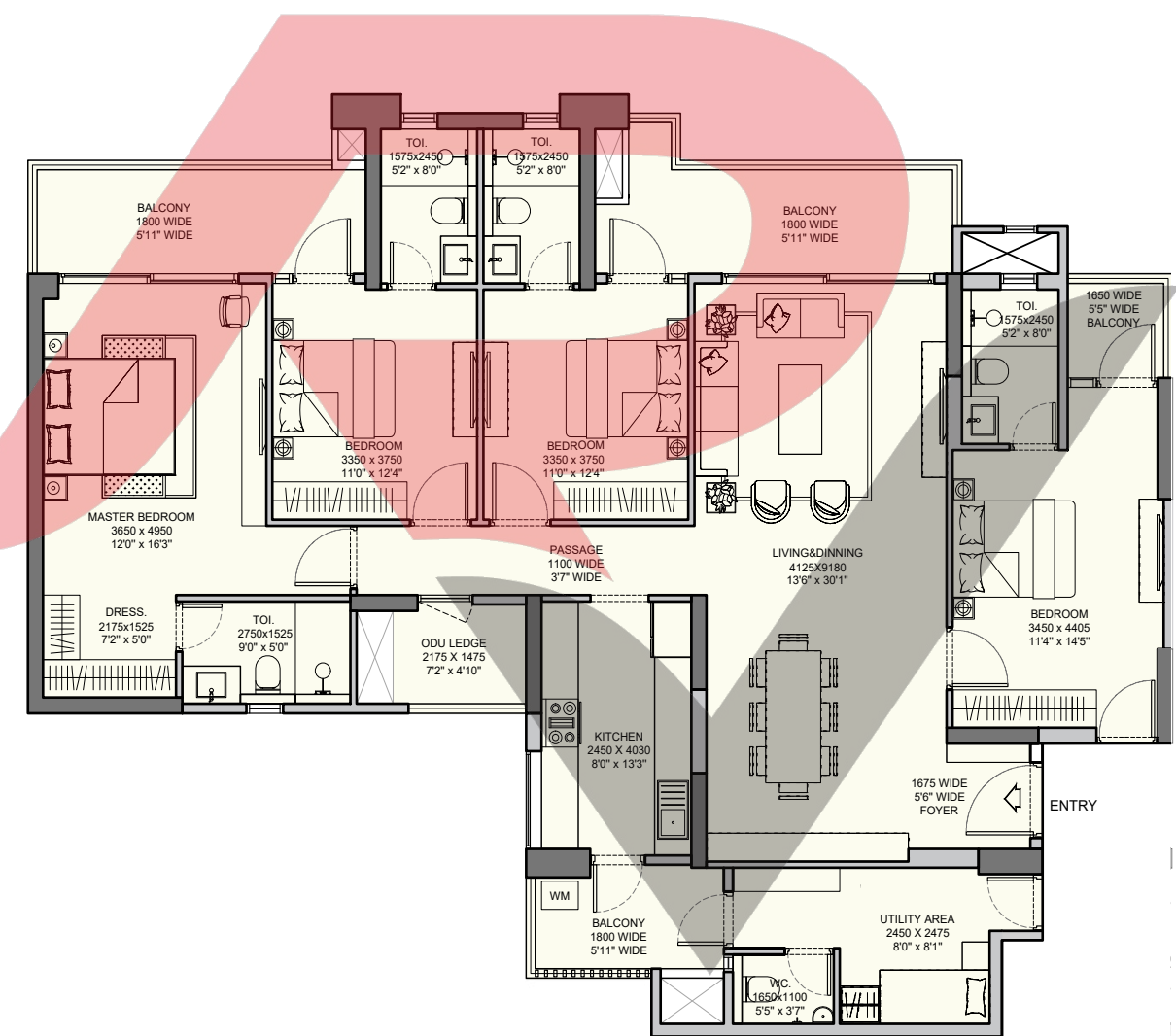
4BHK+ 4T+U-T (TYPE A)*

Carpet Area : 153.440 sq.mtr./1651.63 sq.ft.
 Balcony Area : 29.338 sq.mtr./315.79 sq.ft.
 ODU Ledge Area : 3.305 sq.mtr./35.58 sq.ft.

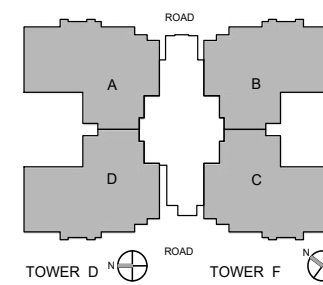


4BHK+ 4T+U-T (TYPE B)

Carpet Area : 153.440 sq.mtr./1651.63 sq.ft.
 Balcony Area : 29.338 sq.mtr./315.79 sq.ft.
 ODU Ledge Area : 3.305 sq.mtr./35.58 sq.ft.



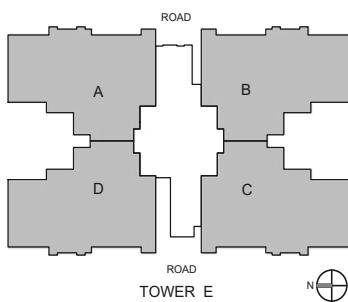
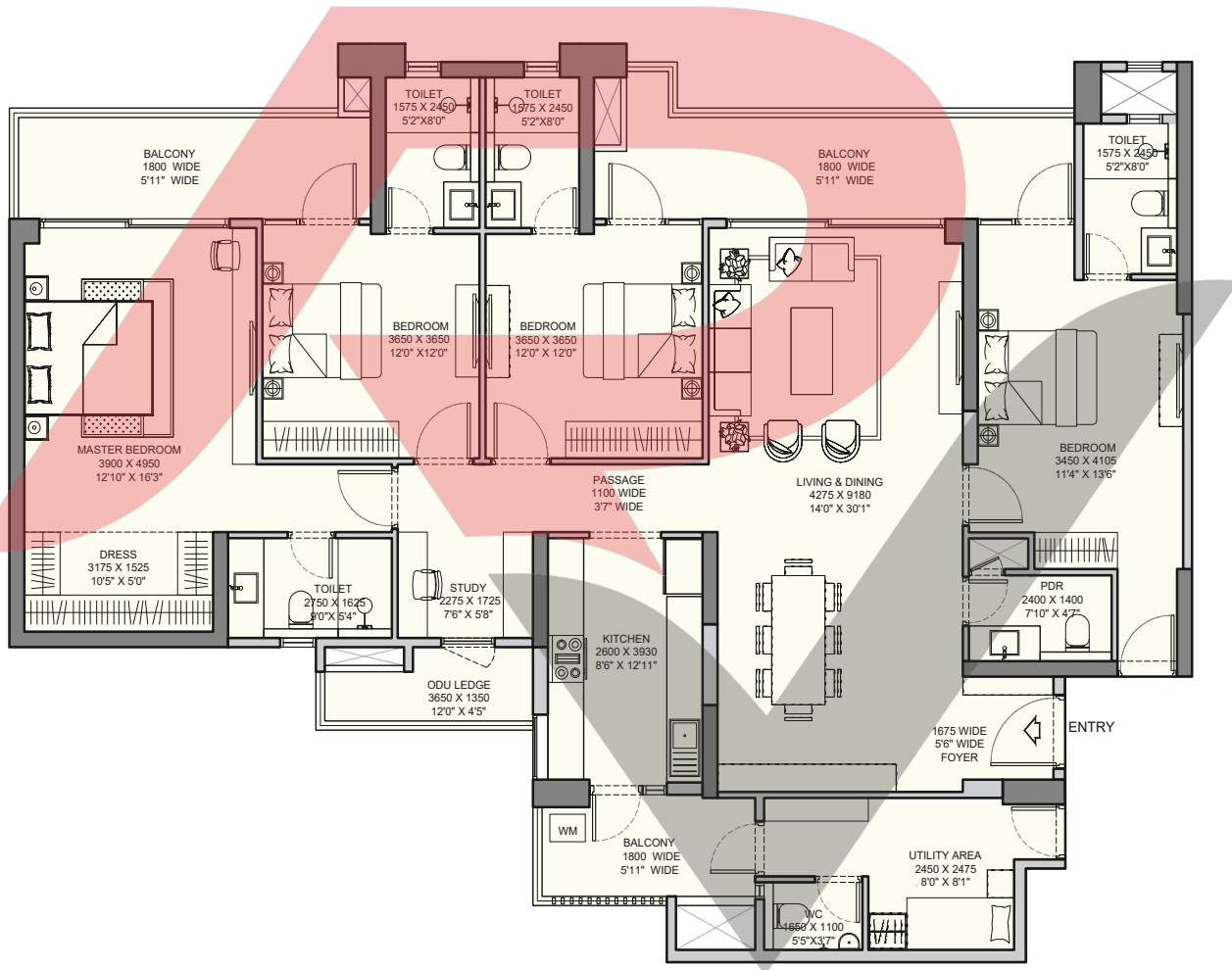
Note: *Room usage as per the approved building plan.
 The floor plans, layout plans, areas, dimensions and specifications mentioned herein above are for reference purpose only. The same are subject to revision in compliance with applicable law. All the given dimensions are from masonry to masonry. 1 sq.m. = 10.764 sq.ft.



Note: The floor plans, layout plans, areas, dimensions and specifications mentioned herein above are for reference purpose only. The same are subject to revision in compliance with applicable law. All the given dimensions are from masonry to masonry. 1 sq.m. = 10.764 sq.ft.

4BHK+ 4T+U-T (TYPE C)

Carpet Area : 172.880 sq.mtr./1860.88 sq.ft.
 Balcony Area : 32.200 sq.mtr./346.60 sq.ft.
 ODU Ledge Area : 4.275 sq.mtr./46.02 sq.ft.



Note: The floor plans, layout plans, areas, dimensions and specifications mentioned herein above are for reference purpose only. The same are subject to revision in compliance with applicable law. All the given dimensions are from masonry to masonry. 1 sq.m. = 10.764 sq.ft.