



“Nature is not a place  
to visit, it is home.”


ESTATE  
361

[www.realtyventuresindia.com](http://www.realtyventuresindia.com)



INTRODUCTION TO ESTATE 361 | HARERA Registration No.: RC/RFP/HARERA/GGM/1012/744/2025/115 | HARERA Website: <https://haryanarera.gov.in>

*Quote by Gary Snyder*



*Variety* is the essence of life —  
as old as time, omnipresent  
in our natural environment.




You have ants of *microscopic* proportions,  
and sparrows that *soar* overhead.



You have lotuses that *bloom* in muddy waters,  
and your *towering* banyans.

You have langurs that find *strength* in numbers,  
and also your *lone* wolves.



An illustration of a woman with dark hair in a ponytail, wearing a light green t-shirt and white shorts, running towards the right. She is carrying a pink bag with a white flower design. A brown dog is running alongside her. The background features stylized trees with green and yellow foliage, two birds flying in the sky, and a body of water with red lotus flowers in the bottom left corner.

And then you have *people* —  
of different kinds, from different places,  
with different habits.



Drawing from this diversity, we wanted to imagine a place where creatures of all kinds, live together *synergistically*, enriching life for everyone.



# A home with a unit for *every* kind of unit —



whether you're  
a pack of four  
looking for a *lively*  
neighbourhood,



a pair of  
wise owls  
building your  
*next* nest,



or an industrious  
beaver that wants  
a *private* lodge in  
the lap of nature.

An artistic rendering of a modern, multi-story residential building named Estate 361. The building features a curved facade with multiple balconies, some of which are covered in lush green ivy. The ground floor has large glass windows. The building is surrounded by trees and greenery. In the foreground, there are decorative elements: a green, textured shape in the top left corner with small red flowers, a dark green, textured shape in the top right corner with small white flowers, and a brown deer-like animal standing behind a green, textured bush in the bottom right corner.

# Many habits, *one* habitat.

Welcome to Estate 361 — a vibrant *ecosystem* for every lifestyle.



INTRODUCTION TO ESTATE 361 | HARERA Registration No.: RC/REP/HARERA/GGM/1012/744/2025/115 | HARERA Website: <https://haryanarera.gov.in>

[www.realtyventuresindia.com](http://www.realtyventuresindia.com)

A view of Estate 361.

ARTISTIC RENDITION



# Enabling you to Live *Well* through...

## A curation of *residences*

...thoughtfully designed to cater to different lifestyles and interests, situated within one vibrant ecosystem spanning **18.23 acres**.

## 2,50,000+ sq.ft. of *greens*

...in the heart of the development, landscaped with **water features** and **countryside meadows**.

## 2,00,000+ sq.ft. of *amenities*

...including a dedicated **clubhouse**, indoor and outdoor **sports facilities** and **convenience amenities**.

## Unparalleled *connectivity*

...enabled by a strategic location in **Sector 36A on Dwarka Expressway**, in the heart of Gurugram's emerging urban hub.



INTRODUCTION TO ESTATE 361 | HARERA Registration No.: RC/REP/HARERA/GGM/1012/744/2025/115 | HARERA Website: <https://haryanarera.gov.in>

[www.realtyventuresindia.com](http://www.realtyventuresindia.com)



A view of the Canopies at Estate 361  
and the surrounding greens.

ARTISTIC RENDITION



INTRODUCTION TO ESTATE 361 | HARERA Registration No.: RC/REP/HARERA/GGM/1012/744/2025/115 | HARERA Website: <https://haryanarera.gov.in>

[www.reealtyventuresindia.com](http://www.reealtyventuresindia.com)

Estate 361 is rooted  
in a proven insight —  
that humans live  
better when they're  
*closer to nature.*





Research shows that proximity to nature has a positive impact on your...



mind,

Exposure to natural settings can improve your **working memory**, **cognitive flexibility** and **attentional control**.

[Nurtured by nature \(2020\)](#)



body,

Improved access to green spaces is linked to **better heart** and **lung health**, **increased physical activity** and **lower obesity rates**.

[Urban Green Spaces and Health: WHO Report \(2016\)](#)



& soul

Regular interaction with natural environments has been linked to **reduced stress**, **anxiety** and **depression**.

[Spending at least 120 minutes a week in nature is associated with good health and wellbeing \(2019\)](#)

So we built  
a home that  
feels like having  
a *forest* in your  
backyard.





# The Forest

Our development is anchored by the Forest — a lush space offering moments of restfulness, reflection and community interaction. The Forest is a celebration of Indian ecosystems, reintroducing **native plant** and **animal species** such as banyans and sparrows, and including features like open **meadows**, lush **hillocks** and cosy **seating nooks**.



INTRODUCTION TO ESTATE 361 | HARERA Registration No.: RC/REP/HARERA/GCM/1012/744/2025/115 | HARERA Website: <https://banyanarera.gov.in>

[www.realtyventuresindia.com](http://www.realtyventuresindia.com)

The Forest at Estate 361

ARTISTIC RENDERING









The winding lake at Estate 361,  
along with a crossing bridge.

ARTISTIC RENDERING



INTRODUCTION TO ESTATE 361 | HARERA no.: RC/REP/HARERA/GGM/1012/744/2025/115 | HARERA website: <https://harayanandra.gov.in/>

[www.realtyventuresindia.com](http://www.realtyventuresindia.com)





INTRODUCTION TO ESTATE 361 | HARERA Registration No.: RC/REP/HARERA/GGM/1012/74023-74123 | HARERA Website: <https://haryanarera.gov.in>

A view of The Forest.

ARTISTIC RENDERING



# A celebration of Indian ecosystems.



Spread across **1,50,000 sq.ft**, the Forest is home to **over 1000 native plants** across **50+ species**, carefully chosen for their ability to thrive in Gurugram's climate while enriching the community's everyday life.

The selection of species such as Neem, Banyan, Peepal, Jamun, Arjun, Amaltas, Kachnar and Kadamba reflects our philosophy: they are **indigenous**, demand **less water**, actively **purify the air** and **provide dense shade** that lowers ambient temperatures in scorching summers. Together, they nurture biodiversity by attracting birds, bees and butterflies, ensuring the forest becomes a thriving ecosystem in itself.

Species\* at the estate include:

- Neem (*Azadirachta indica*)
- Banyan (*Ficus benghalensis*)
- Pilkhan (*Ficus infectoria*)
- Jamun (*Syzygium cumini*)
- Arjun (*Terminalia arjuna*)
- Amaltas (*Cassia fistula*)
- Kachnar (*Bauhinia variegata*)
- Kadamba (*Anthocephalus cadamba*)
- Semal (*Bombax malabaricum*)
- Kanak Champa (*Pterospermum pterocarpum*)
- Resham Rui (*Chorisia speciosa*)
- Pride of India/Jarul (*Lagerstroemia flos reginae*)
- Champa (*Plumeria alba*)
- Amla (*Phyllanthus emblica*)
- Aam (*Mangifera indica*)

\*Planned provision at the estate and subject to change.

# A glimpse into the Forest.



## The winding lake

emerging from a spring,  
meandering through the Forest



## Idyllic seating nooks

offering scenic views  
and space for solo-time as  
well as community gathering



## The rustic bridge

leading to lush,  
grassy meadows



## The prospect hill

densely planted with local  
species of trees





# The Landscape

Thoughtfully designed to evoke the feeling of our natural environment, Estate 361's landscaping is organic, meandering — and filled to the brim with opportunities to engage with nature.



INTRODUCTION TO ESTATE 361 | HARERA Registration No.: RC/REP/HARERA/GGM/1012/744/2025/115 | HARERA Website: <https://haryanarera.gov.in>

Pedestrian walkways at Estate 361.

ARTISTIC RENDERING

[www.realtyventuresindia.com](http://www.realtyventuresindia.com)





INTRODUCTION TO ESTATE 361 | HARERA Registration No.: RC/REP/HARERA/GGM/1012/744/2025/115 | HARERA Website: <https://haryanaharera.gov.in>

The jogging track at Estate 361.

ARTISTIC RENDERING

[www.realtyventuresindia.com](http://www.realtyventuresindia.com)



# A *tryst* with nature at every step.



## Productive landscaping areas

including a **gardenesque patch**, where residents can grow their own plants



## Communal spaces

that act as cultural hubs for festivities and engagement, such as an **events lawn** and a **retail plaza**



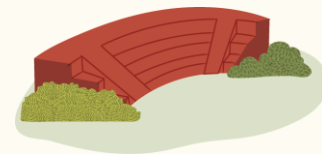
## Outdoor play areas

sprinkled across the estate for children and adults alike, such as a **children's den** and a **golf putting course**



## A car-free ground plaza

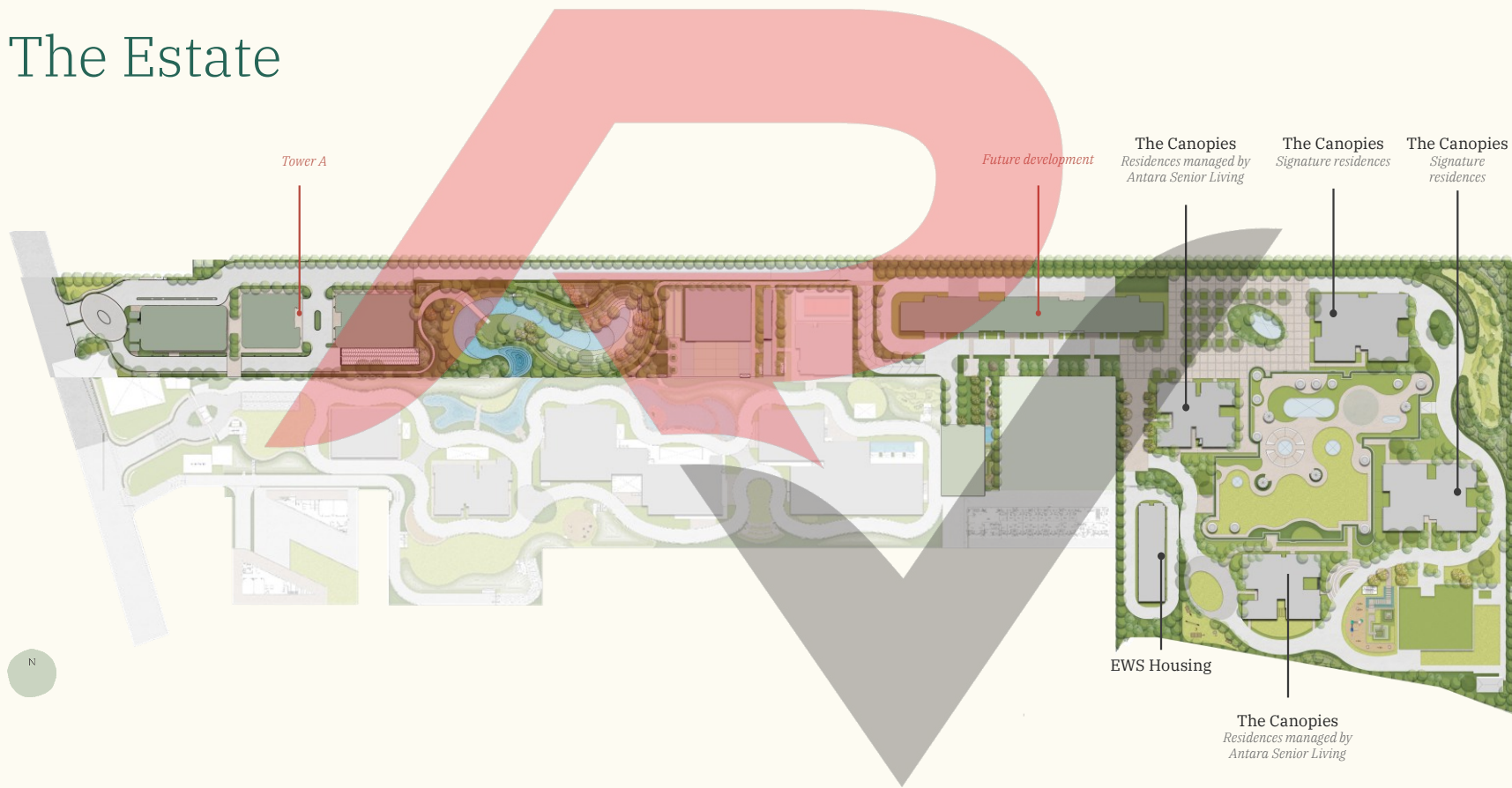
allowing residents to connect with the outdoors in a commotion-free manner



## Seating nooks

for rest and relaxation, including a **tree court plaza**, a **pavilion**, a **seniors' park** and more

# The Estate





DESIGNED FOR REAL WELL-BEING

# A home that helps you LiveWell.

Estate 361's design and offerings are rooted in our key pillars of well-being, all to enrich your quality of life.



## Engineering Excellence

*Engineered to be resilient, future-ready and precise in performance*

Aluminium shear wall formwork used in construction, earthquake-resistant buildings and provisions for water heating for all homes.



## Nature & Biophilia

*Designed to bring nature into your everyday environment*

A 1,50,000+ sq.ft. central forest, surrounding green spaces, water features, countryside meadows and native plants across the estate.



## Community Building

*Thoughtfully planned to nurture meaningful interactions*

Spaces such as parks, playgrounds and seating nooks, as well as a year-round calendar of events curated by Pulse, our programming partner.



## Health, Wellness & Longevity

*Rooted in movement, care and nourishment*

Amenities such as a dedicated sports hub, a wellness clinic and a longevity-themed clubhouse integrating medical-grade offerings and wellness technology.



## Air & Water

*Built to promote health and high-quality living*

A thoughtfully designed natural ventilation system complemented by filtered fresh air circulation, as well as advanced UV filtration systems to effectively disinfect and purify water.



INTRODUCTION TO ESTATE 361 | HARERA Registration No.: RC/REP/HARERA/GGM/1012/744/2025/115 | HARERA Website: <https://haryanarera.gov.in>

[www.realtyventuresindia.com](http://www.realtyventuresindia.com)

# Bringing to life - MaxVille, an integrated community concept

Max Estates, with its established institutional capabilities across key functions, is well positioned to deliver an integrated development that offers you holistic well-being across different lifestyle facets.

## HEALTHCARE



## EDUCATION



## SENIOR LIVING



## HOSPITALITY



## WELLNESS



## FOOD & BEVERAGE



# A commitment to sustainable living.



PRE-CERTIFICATION

As an IGBC Platinum Pre-certified project — the highest possible certification awarded to a development — we proudly achieve the exceptional standards of energy efficiency, water efficiency, material selection and waste management set by the Indian Green Building Council.



Our **VRF-based air conditioning** ensures precise temperature control, **significant energy savings**.



A **hot water heat pump system** ensures instant, energy-efficient hot water to every residence.



A built-in **UV purification system** ensures that every drop of water in your home meets the highest standards of safety and clarity.



**High-performance glass windows** filter heat while uplifting your interiors with natural light.



**Designer low-flow fixtures** elevate your bathrooms while significantly reducing water usage.



With **rainwater harvesting, centralised waste systems** and **advanced sewage treatment**, sustainable living is effortless.



Built with **low-VOC materials** and meticulous attention to air quality, your home offers you access to fresh air at all times.



**Individual water and energy meters** empower residents to monitor usage and reduce consumption.



From ambient lighting to everyday appliances, each element is **energy-conscious by design**.



An **on-site organic waste composter** turns daily waste into nourishment for the earth.



# The Rooftop Courtyard

Our community clubhouse, The Hub, also has a fully landscaped **rooftop garden** enabling residents to practise yoga and meditation or simply bask in the sun. At the same time, seating and planting nooks dotted along the facade of the clubhouse create a sense of visual variety.

Aerial view of The Hub,  
our community clubhouse.

ARTISTIC RENDERION



INTRODUCTION TO ESTATE 361 | HARERA Registration No.: RC/REP/HARERA/GGM/1012/744/2025/115 | HARERA Website: <https://haryanarera.gov.in>

[www.realtyventuresindia.com](http://www.realtyventuresindia.com)





The drop off at Retail Plaza at Estate 361.



INTRODUCTION TO ESTATE 361 | HARERA Registration No.: RC/REP/HARERA/GGM/1012/744/2025/115 | HARERA Website: <https://haryanarera.gov.in>

ARTISTIC RENDERING



# A thoughtful *balance* of nature and urbanity.



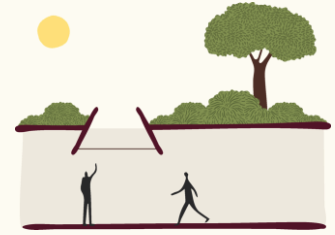
## A yoga terrace

allowing residents to meaningfully engage with nature



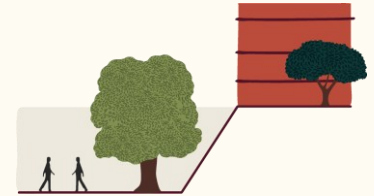
## 70,000 sq.ft. of terrace greens

including courtyard cutouts, enabling real well-being



## Voids, skylights and pop-ups

creating a sense of openness within the clubhouse



## Sunken courts

bringing residents closer to the outdoors even inside the clubhouse



An artistic rendering of a modern residential complex, Estate 361. The image shows a lush green golf course in the foreground with a golfer in mid-swing. In the background, there are two tall, multi-story apartment buildings with balconies. A paved path runs alongside the golf course, where a person is walking a dog. A signpost on the right indicates 'GOLF PUTTING' and 'PET PARK'. The scene is framed by stylized green foliage at the top and bottom. The text 'A bouquet of amenities for every lifestyle.' is overlaid on the left side.

*A bouquet of amenities  
for every lifestyle.*



INTRODUCTION TO ESTATE 361 | HARERA Registration No.: RC/REP/HARERA/GGM/1012/744/2025/115 | HARERA Website: <https://haryanarera.gov.in>

[www.realtyventuresindia.com](http://www.realtyventuresindia.com)

The putting course at Estate 361.

ARTISTIC RENDERION





The drop off at Retail Plaza at Estate 361.

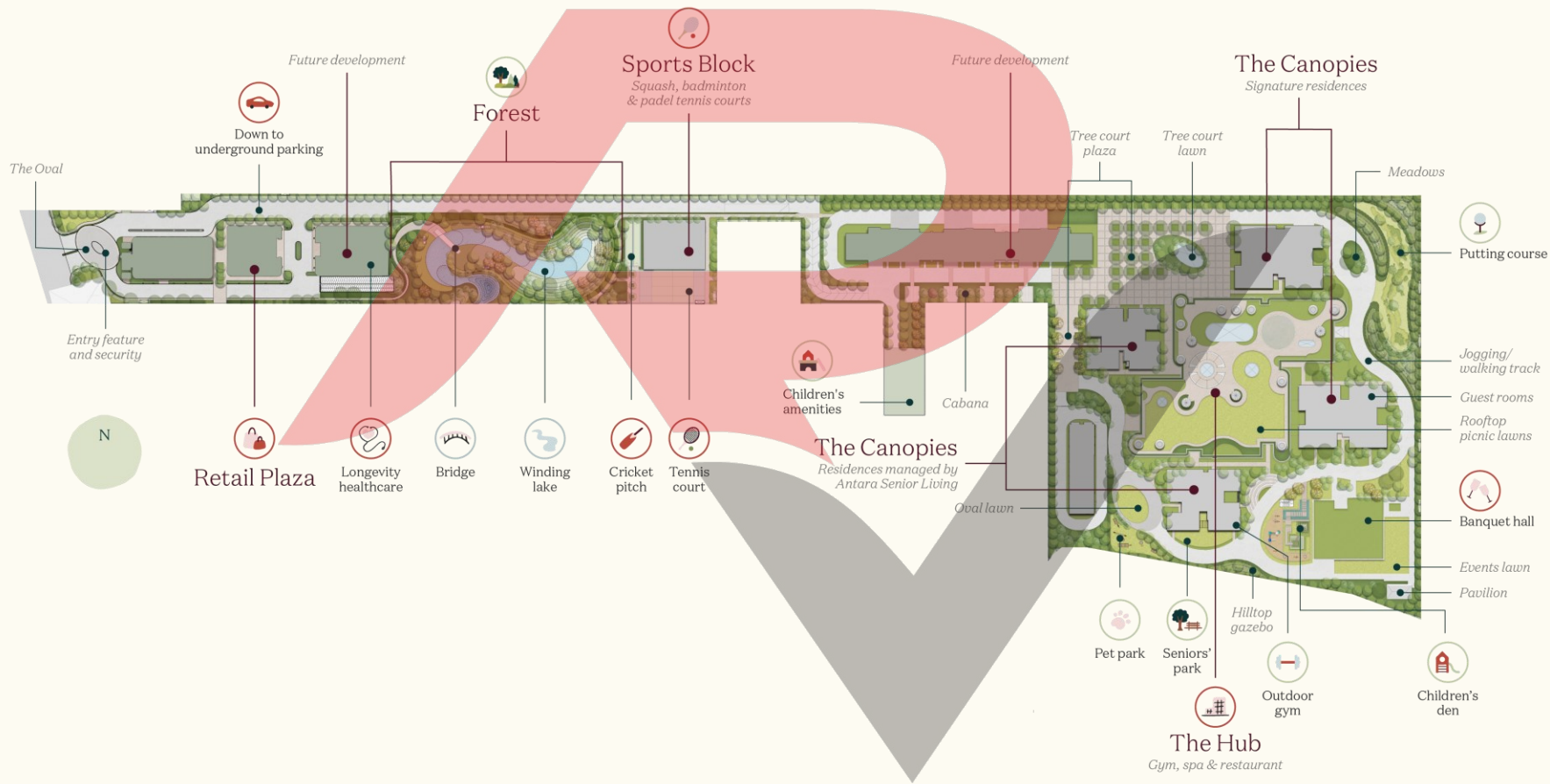


INTRODUCTION TO ESTATE 361 | HARERA Registration No.: RC/REP/HARERA/GGM/1012/744/2025/115 | HARERA Website: <https://haryanarera.gov.in>

ARTISTIC RENDERING

[www.realtyventuresindia.com](http://www.realtyventuresindia.com)









The Hub at Estate 361,  
offering an array of well-being amenities.



INTRODUCTION TO ESTATE 361 | HARERA Registration No.: RC/REP/HARERA/GGM/1012/744/2025/115 | HARERA Website: <https://haryanarera.gov.in>

ARTISTIC RENDERING





→ The Hub

→ Banquet

The route to The Hub  
and the banquet hall at Estate 361.

ARTISTIC RENDITION



INTRODUCTION TO ESTATE 361 | HARERA Registration No.: RC/REP/HARERA/GGM/1012/744/2025/115 | HARERA Website: <https://haryanarera.gov.in>

[www.realtyventuresindia.com](http://www.realtyventuresindia.com)





A view of The Hub at Estate 361.

ARTISTIC RENDERING



INTRODUCTION TO ESTATE 361 | HARERA Registration No.: RC/REP/HARERA/GGM/1012/744/2025/115 | HARERA Website: <https://haryanarera.gov.in>

[www.realtyventuresindia.com](http://www.realtyventuresindia.com)



## Leisure & Entertainment



- Indoor games room
- Banquet hall
- Oval lawn
- Events lawn
- Theatre
- Studio
- Reading room

## Sports & Fitness



- All-weather pool
- Gymnasium
- Movement room  
(for yoga, aerobics & dance)
- Tennis court
- Squash court
- Badminton courts
- Padel tennis courts
- Jogging track
- Golf putting course
- Cricket pitches

## Food & Nutrition



- All day dining
- Deli/Bakery
- Juice bar
- Sports bar





Sports block at Estate 361.

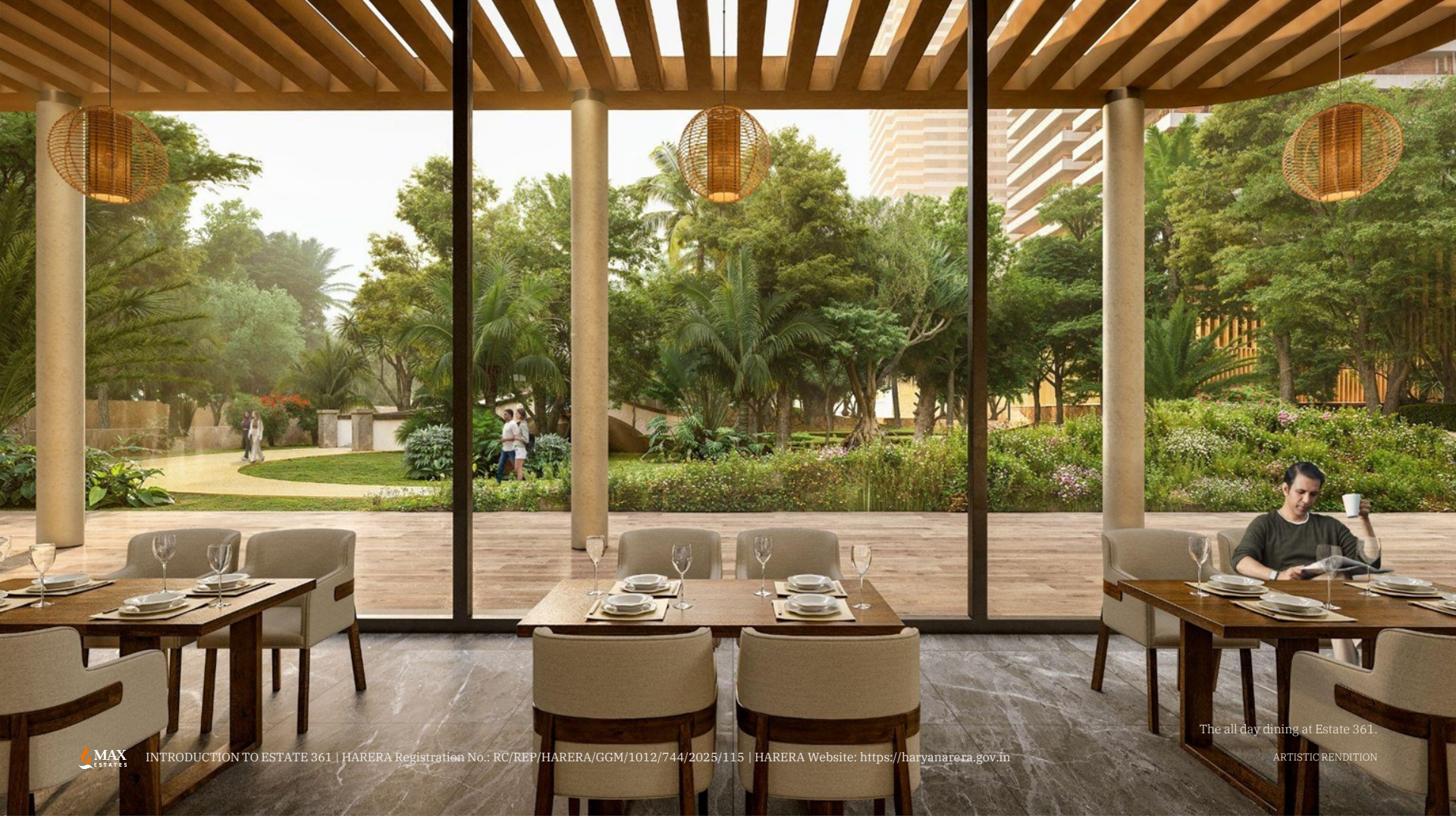
ARTISTIC RENDITION



INTRODUCTION TO ESTATE 361 | HARERA Registration No.: RC/REP/HARERA/GGM/1012/744/2025/115 | HARERA Website: <https://haryanarera.gov.in>

[www.realtyventuresindia.com](http://www.realtyventuresindia.com)





INTRODUCTION TO ESTATE 361 | HARERA Registration No.: RC/REP/HARERA/GGM/1012/744/2025/115 | HARERA Website: <https://haryanarera.gov.in>

The all day dining at Estate 361.

ARTISTIC RENDERING

## AMENITIES AT THE ESTATE

### Health & Wellness



Spa  
Sauna/Steam  
Treatment rooms  
Therapy pool  
Physiotherapy room  
Lifecare suites  
Health room  
Phlebotomy room  
Wellness manager room  
Nutritionist room  
Longevity wellness offering  
Consultant room  
Ambulance & emergency services

### Children's Amenities



Creche  
Schools  
Children's den  
Children's waterpad  
Toddlers' pool  
Sand pit

### Productivity & Convenience



Business centre  
Guest rooms  
Smart lockers  
Pet park  
Laundry & dry cleaning services  
ATM  
Florist\*  
Boutique lifestyle store\*  
Pharmacy\*  
Book & gift shop\*  
Pet store & creche\*  
Convenience store\*  
Optical store\*  
Organic grocery store\*  
Salon\*  
Hardware\*

\*Planned provision in the retail plaza and subject to change.



INTRODUCTION TO ESTATE 361 | HARERA Registration No.: RC/REP/HARERA/GGM/1012/744/2025/115 | HARERA Website: <https://haryanarera.gov.in>

[www.realtyventuresindia.com](http://www.realtyventuresindia.com)







INTRODUCTION TO ESTATE 361 | HARERA Registration No.: RC/REP/HARERA/GGM/10125/44/2025/115 | HARERA Website: <https://haryana.hara.gov.in>

A view of the Hub  
ARTISTIC RENDERING

# Here for a good time, *and* a long time.

Our estate offers state-of-the-art wellness solutions designed to enrich residents' well-being. Focused on longevity, these interventions integrate diagnostics, medical-grade offerings, wellness technology and strategic partnerships, all to help you live longer and better.

Planned provisions\* include a comprehensive, state-of-the-art health check featuring next-generation medical technology, access to light medical therapies and recovery tools, as well as personalised healthcare solutions.

Indicative list of well-being interventions:



Ayurveda



Acupuncture



Cold plunges



Infrared saunas



Pranic healing

\*Planned provision at The Hub and subject to change.









INTRODUCTION TO ESTATE 361 | HARERA Registration No.: RC/REP/HARERA/GGM/1012/744/2025/115 | HARERA Website: <https://haryanarera.gov.in>

A view of The Hub.

ARTISTIC RENDERING

[www.realtyventuresindia.com](http://www.realtyventuresindia.com)





Everything you *need*,  
a stone's throw away.



INTRODUCTION TO ESTATE 361 | HARERA Registration No.: RC/REP/HARERA/GGM/1012/744/2025/115 | HARERA Website: <https://haryanarera.gov.in>

[www.realtyventuresindia.com](http://www.realtyventuresindia.com)

A view of Estate 361  
and the surrounding greens.

ARTISTIC RENDERING



## LOCATION

# Strategically located with *seamless* connectivity to key destinations.

Located in Gurugram's fastest growing **Transit-Oriented Development (TOD)** zone, our estate sits near the confluence of **Dwarka Expressway**, the proposed **Metro corridor**, and the **Central Peripheral Road (CPR)**, ensuring strong connectivity to Gurugram's residential hubs, as well as employment hubs such as **Cyber City** and **Golf Course Road**. **Golf Course Extension Road**, fast emerging as the primary market for commercial offices, is also only a 30-minute ride away.

Proximity to **NH-48\*** offers direct access to Delhi NCR. The nearby **Clover Leaf flyover** links SPR, CPR, and NH-48\*, while a trumpet junction by the National Highway Authority connects Dwarka Expressway and CPR.

- Map not to scale.  
- NH-8 is now NH-48



INTRODUCTION TO ESTATE 361 | HARERA Registration No.: RC/REP/HARERA/GGM/1012/744/2025/115 | HARERA Website: <https://haryanarera.gov.in>

[www.realtyventuresindia.com](http://www.realtyventuresindia.com)





## LOCATION

### Connectivity

- 5 min** to the proposed Delhi Metro station
- 10 min** to the Regional Rapid Transit System (RRTS)
- 25 min** to Sector 55-56 Metro Station
- 35 min** to the Indira Gandhi International Airport (IGI)

### Healthcare

- 5 min** to Genesis Hospital
- 8 min** to Aarvy Hospital
- 15 min** to Medanta Hospital
- 15 min** to Signature Hospital
- 17 min** to Vedic Hospital

### Education

- 8 min** to the N.S.P School
- 9 min** to Gurgaon World School
- 15 min** to Delhi Public School

### Lifestyle & leisure

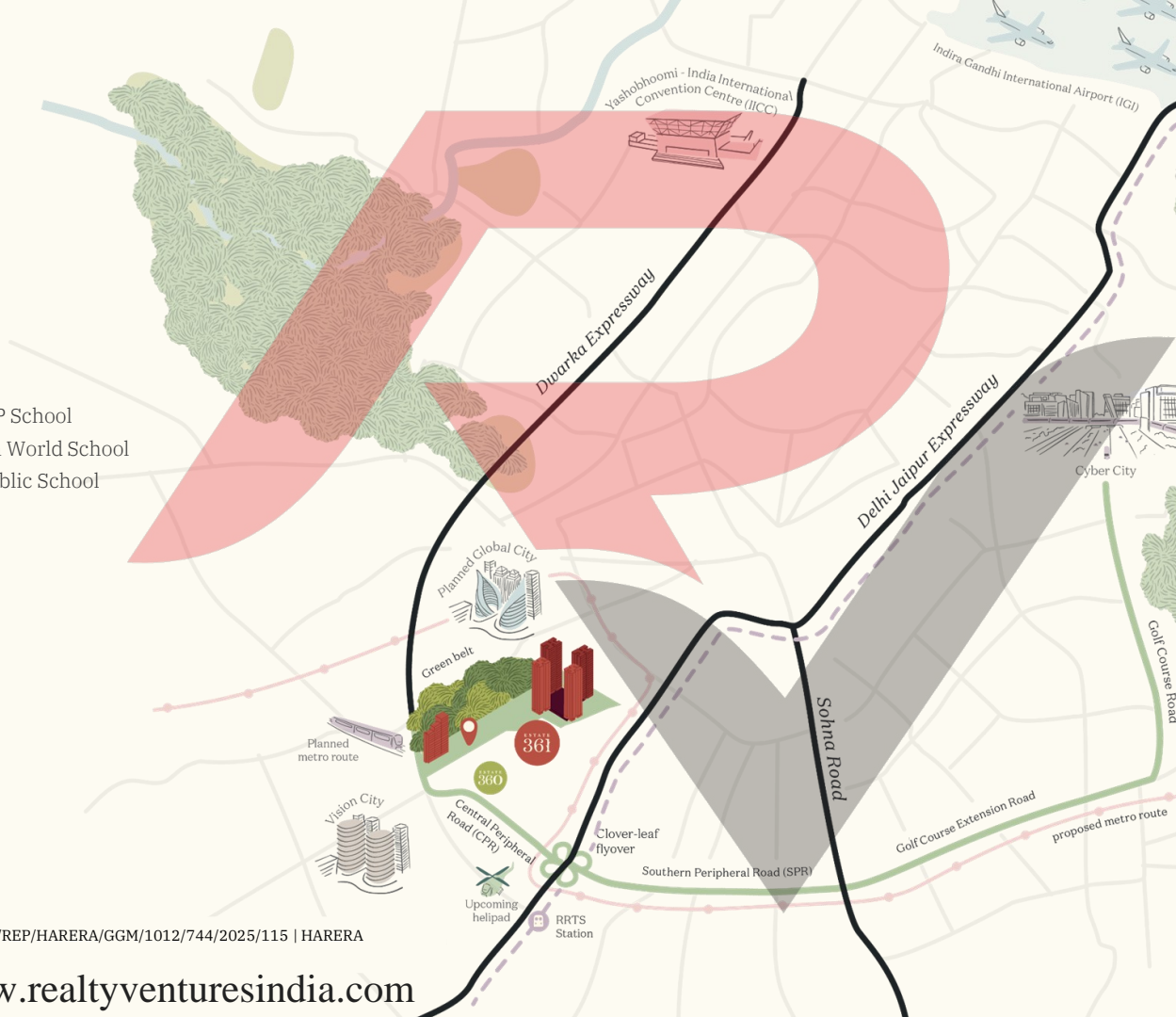
- 2 min** to the planned Global City
- 5 min** to the proposed Vision City
- 29 min** to Classic Golf & Country Club, Tauru
- 30 min** to Cyber City
- 30 min** to Ambience Mall
- 30 min** to IICC, Dwarka

- Map not to scale.  
- NH-8 is now NH-48



INTRODUCTION TO ESTATE 361 | HARERA Registration No.: RC/REP/HARERA/GGM/1012/744/2025/115 | HARERA  
Website: <https://haryanarera.gov.in>

[www.realtyventuresindia.com](http://www.realtyventuresindia.com)





# Welcome to *The Canopies*

Residences at Estate 361

Intentionally designed to make space  
for a variety of **age groups** and **lifestyles**.



INTRODUCTION TO ESTATE 361 | HARERA Registration No.: RC/REP/HARERA/GGM/1012/744/2025/115 | HARERA Website: <https://haryanarera.gov.in>

[www.realtyventuresindia.com](http://www.realtyventuresindia.com)





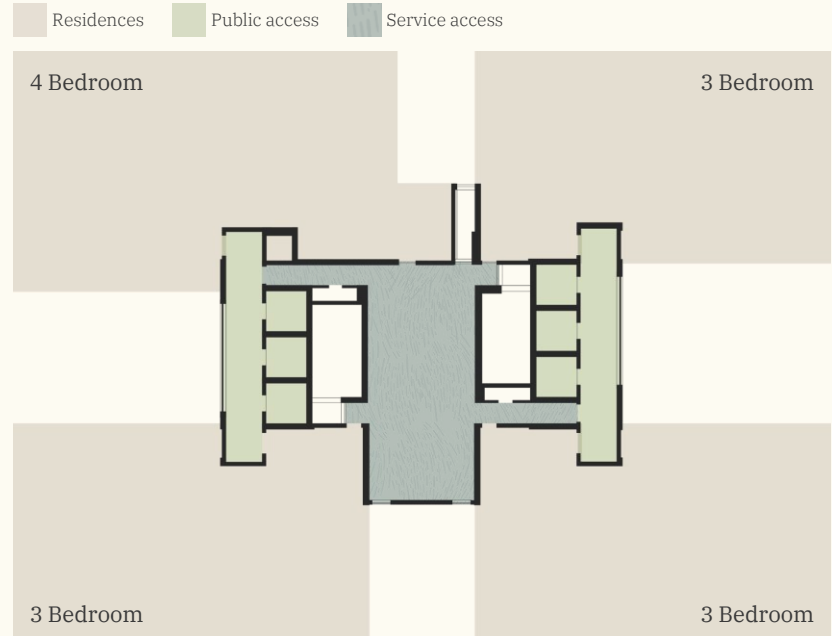
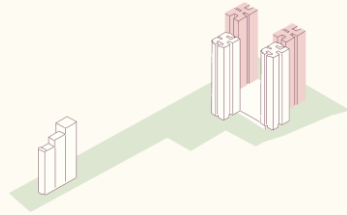
INTRODUCTION TO ESTATE 361 | HARERA Registration No.: RC/REP/HARERA/GGM/1012/144/2025/115 | HARERA Website: <https://haryanaharera.gov.in>

Signature residences at Estate 361

ARTISTIC RENDERING

## *A sanctuary amidst a lively ecosystem.*

Our signature residences are built with careful consideration towards your comfort. **Air-conditioned lobbies** make for a pleasant arrival experience. Additionally, the four homes on every floor are served by **three separate elevator lobbies**, minimising crowding and offering you privacy.





*A sanctuary amidst  
a lively ecosystem.*



Sunlit, air-conditioned  
residence lobbies



Two-to-a-core experience, with two separate  
lift lobbies serving two homes on every floor



Separate service and  
passenger lobbies



Segregation of private  
and semi-private spaces



Wraparound balcony  
with 3-side open view



Dedicated store  
and staff entry



A view of the wraparound deck  
at an Estate 361 home.

ARTISTIC RENDITION



INTRODUCTION TO ESTATE 361 | HARERA Registration No.: RC/REP/HARERA/GGM/1012/744/2025/115 | HARERA Website: <https://haryanarera.gov.in>



## Experience the *future* of modern living.

We believe in seamlessly integrating technology into your daily living to make it easier and more secure — and our homes do just that. Our residences are designed to integrate state-of-the-art home automation, for your peace of mind.



### One Tap Lighting Control

Our home automation system ensures everything you need is a tap away. Effortlessly switch on or switch off the lighting, fan & AC in every room, with a mobile application.



### Sensing Your Needs, At All Times

Our homes come equipped with motion sensor lights in all bathrooms, for your convenience, while our kitchens are equipped with gas leakage sensors to detect any potential hazards.



### Door Monitor, For Your Safety

Our video door phones enable you to see and communicate with anyone at your door, whether you're at home or away. This added layer of security allows you to control access to your home and monitor visitors, enhancing your overall safety and peace of mind. Smart door locks in our homes offer advanced security features, allowing you to lock and unlock your door remotely using your smartphone, and even grant access to visitors from wherever you are.



### Control Your Smart Home, With Your Smartphone

All of the above mentioned features are seamlessly integrated and easily controlled through intuitive applications on your phone. Manage and monitor your home from anywhere, and enjoy the flexibility of staying connected to your living space, even on the go.





PENTHOUSE HOMES

# Sky Villas at Estate 361

Our double-storey penthouse residences, called Sky Villas, are generously designed, carefully planned and equipped with an array of modern amenities, including a study, master suites and spacious walk-in closets. Each Sky Villa also comes with a private elevator and a double-height lift lobby.



INTRODUCTION TO ESTATE 361 | HARERA Registration No.: RC/REP/HARERA/GGM/1012/744/2025/115 | HARERA Website: <https://haryanarera.gov.in>

ARTISTIC RENDITION



## Unit Specifications for Residences

<b>1</b>	<b>Living/Dining/Foyer</b>	
1.1	Floor	Premium marble or equivalent
1.2	Walls	Acrylic emulsion paint
1.3	Ceiling	Acrylic emulsion paint/oil bound distemper paint
<b>2</b>	<b>Master Bedroom/Dressroom</b>	
2.1	Floor	Laminated wooden flooring/premium marble or equivalent
2.2	Walls	Acrylic emulsion paint
2.3	Ceiling	Acrylic emulsion paint/oil bound distemper paint
2.4	Modular Wardrobes	Equipped with premium quality hardware
<b>3</b>	<b>Bedroom</b>	
3.1	Floor	Laminated wooden flooring/premium marble or equivalent
3.2	Walls	Acrylic emulsion paint/oil bound distemper paint
3.3	Ceiling	Acrylic emulsion paint/oil bound distemper paint
3.4	Modular Wardrobes	Equipped with premium quality hardware
<b>4</b>	<b>Bathroom</b>	
4.1	Floor	Premium quality anti-skid tiles
4.2	Walls	Stone/tiles; acrylic emulsion paint/oil bound distemper paint over it
4.3	Ceiling	Acrylic emulsion paint/oil bound distemper paint
4.4	Counters	Marble/granite/engineered stone or equivalent
4.5	Sanitary Ware/Chrome-Plated Fittings	Washbasin, chrome-plated fittings, glass shower partitions, premium quality WC

<b>5</b>	<b>Kitchen</b>	
5.1	Floor	Premium quality anti-skid tiles
5.2	Walls	Combination of ceramic/vitrified tiles and acrylic emulsion paint/oil bound distemper paint
5.3	Ceiling	Acrylic emulsion paint/oil bound distemper paint
5.4	Counters	Marble/granite/engineered stone or equivalent
5.5	Fixtures	Chrome-plated fittings; stainless steel sink with drainboard of premium quality
5.6	Kitchen Appliances	Equipped with chimney, hob, microwave, refrigerator, washing machine and heat pump
<b>6</b>	<b>Staff Room &amp; Bathroom</b>	
6.1	Floor	Vitrified tiles
6.2	Walls & Ceiling	Acrylic emulsion paint/oil bound distemper paint
6.3	Bathroom	Anti-skid tiles
<b>7</b>	<b>Balconies</b>	
7.1	Floor	Anti-skid tiles
7.2	Walls & Ceiling	Exterior grade paint
7.3	Railings	Mild steel railing as per design or equivalent



## Unit Specifications for Residences

### SPECIFICATION OF CONSTRUCTION

Specification of apartments and other buildings including the following:

1.1	External Glazings	Aluminium/uPVC frame with glass
1.2	Windows	Aluminium/uPVC frame with glass
2.1	Main Door	Painted polished frame with painted/laminated/veneered flush door
2.2	Internal Doors	Painted polished frame with painted/laminated/veneered flush door
3	Air Conditioning	VRV/VRF AC system; ductable unit in living and dining room; high wall split AC in bedrooms
4	Electrical Fittings	Modular switches and sockets
5	Provision of WiFi & Broadband Facility	Provision for WiFi router and broadband at one location
6	External Finishing/Colour Scheme	Exterior grade paint
7	Conducting & Wiring Details	FRLS wires
8	Water Storage	Half-day storage capacity in OHT
9	Water Heat Pumps	Heat pump of approved make provided in each unit for hot water supply to toilets and kitchen
10.1	Details of Resident Lifts & Capacity	6 resident lifts per floor
10.2	Details of Service Lift & Capacity	1 service lift per floor
11	Home Automation	1. One point control for lighting, fan and AC in every room through a mobile application 2. Door monitor and smart door locks allowing locking/unlocking using smartphones 3. Motion sensor lights in all washrooms and gas leakage sensors in kitchen
12	Air Conditioned Lift Lobbies	Yes
13	Fire Fighting System	Fire fighting system with water sprinklers, smoke detection system etc.





# A home that takes care of you, and *itself*.



## Maintenance and Operations

- Annual maintenance contracts for lifts, fire safety, air conditioners, etc
- Maintenance of landscaped areas, compound walls, electrification, sewerage, roads, paths and other services within the facility boundary
- Maintenance, housekeeping, cleaning, painting and necessary replacements in common areas, including basements
- Operation staff, administrative staff and maintenance staff related to the facility
- All consumables and tools for services in common areas
- Pest control



## Utilities and Services

- Water for all purposes
- Electricity for central air-conditioning (excluding AHUs serving demised premises) and all services in parking, common and external areas
- Power backup maintenance (diesel, lubricants, gas, etc.) for generators and air conditioning systems



## Waste Management and Sustainability

- Waste management and sustainable practices



## Infrastructure and Upgrades

- Maintenance and upkeep of infrastructure including lifts, building façade, air conditioners, garden area, corridors and building lobby
- Augmentation, upgrades and replacements of security, fire and electromechanical systems
- Replacement/refurbishing of parts for maintenance services in common areas



## Financial and Administrative

- Annual fees for various authorities
- Consultancy for renewal of statutory licenses
- Insurance for the facility
- Depreciation/sinking fund/lease rent for electromechanical equipment (e.g. chillers, AHUs, generators, lifts)



## Horticulture and Beautification

- Horticulture and beautification of common areas, including facility surfaces



## Overall Security Management of the Common Areas

- Gate management
- Basements management
- Visitor management
- Tower security
- Patrolling



## Fire and Infra Safety-Related Protocols of the Estate

- Peripheral safety (fencing and CCTV)
- Smoke detectors
- Fire equipment and drill
- Elevator safety



## Plant and Machinery, Civil and IT, MEP Maintenance

- All plant and machinery
- STP
- Fire pumps
- Water treatment
- Electrical panels
- DG and chillers

Indicative; to be further reviewed and refined closer to start of operations.

## Enjoy true ease of living with our exclusive resident services and a dedicated on-site concierge.

### Culinary Services

Enjoy a diverse range of cuisines with our vetted list of home cooks and chefs.

### Food Delivery

Have fresh meals delivered right to your home from The Hub's dedicated kitchen.

### Catering Assistance

For special occasions, our concierge can connect you with reputable F&B vendors for in-home catering.

### Housekeeping Services

Benefit from our in-house housekeeping services for mopping, dusting, and ironing, or choose from hourly, daily, weekly, or monthly packages available through our trusted vendors.

### Laundry Services

Our concierge can connect you with our in-house laundry services for your everyday needs.

### Gardening Services

Access our in-house gardening and horticulture services for assistance with regular maintenance of your home garden.

### Pet Care Services

We offer a range of pet care services in collaboration with our empanelled vendor, including a kennel, veterinary clinic, pet spa and accessories.

### Chauffeur Services

Our concierge can arrange trustworthy chauffeurs for luxury and non-luxury cars.

### Car Cleaning Services

We have an on-site vendor to assist with daily car wash services.

### Car Repair Services

The estate has an on-site car clinic for assistance with minor repairs, modifications, and accessories. The concierge can offer support with car insurance, if required.

### Wellness Centre managed by Antara Senior Living

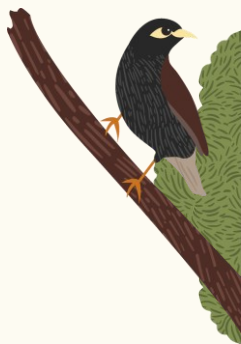
The on-site wellness centre is staffed with a trained nurse, on-site paramedics, and an ambulance for your peace of mind.

### Care at Home managed by Antara Senior Living

Receive personalised medical care from trained professionals in the comfort and safety of your home.

### Early Learning Centre managed by Learning Matters

Nurture your child's development with an enriching curriculum designed to foster creativity and learning through play and hands-on engagement. Programs include First Steps (for ages 2+ to 4 years), Right Start (for ages 4 to 5 years) and the Parent-Toddler Program (for ages 18 months to 2+ years).





Estate 361 is a culmination  
of *meaningful collaborations*  
between global thought leaders.

# Our Partners



**Gensler**

Gensler  
London, UK  
Principal Architect

**RSP**

RSP Design  
Consultants  
Gurugram, India  
Project Architect



Oracles  
New Delhi, India  
Landscape Designer



AEON  
New Delhi, India  
MEP Consultant



Vijay Shankar  
Sharma  
New Delhi, India  
Vastu Consultant

Matrix Management  
Consultants Pvt. Ltd  
New Delhi, India  
VT Consultant



NNC Design  
International  
New Delhi, India  
Structure Consultant



UNITRANS  
New Delhi, India  
Traffic Consultant



# Imagined and developed by Max Estates — the real estate arm of Max Group.



Max Group is a leading Indian multi-business conglomerate with interests across telecommunication, insurance, healthcare, packaging films, real estate and senior care. The Group was founded in 1982 by its founder and chairman, Mr. Aniljit Singh, a leading visionary, entrepreneur and philanthropist.

Currently, Max Group has a total customer base of around 5 million and an employee strength of more than 20,000 across 400 offices in India. The Group has been recognised with numerous accolades for its governance, commitment to care and exceptional value creation while enabling a better society.

## Max Group is driven by a strong set of values and beliefs that underpin all aspects of our operations.



Having nurtured diversified businesses over the last *40 years*...



Pharma



Electrical  
components



Mobile  
telephony



Communication  
services



Plating  
chemicals



Medical  
transportation



...our focus has now shifted to *real* estate & relative ventures.







With a vision to bring real well-being to the real estate sector, Max Estates has curated a diversified portfolio (**17 mn. sq. ft.**) of grade-A+ sustainable residential and commercial developments, across various asset classes and key strategic locations throughout **Delhi-NCR**.

As a well-being company enabled by real estate, we are committed to creating a unique confluence of spaces that enable collaboration, innovation and community — that are not just functional and aesthetically pleasing, but **environmentally sustainable** and designed to promote the holistic wellness of their occupants. We aspire to add at least **3 mn sq. ft.** to our portfolio every year, by building developments rooted in our operating philosophies of **LiveWell** and **WorkWell**.



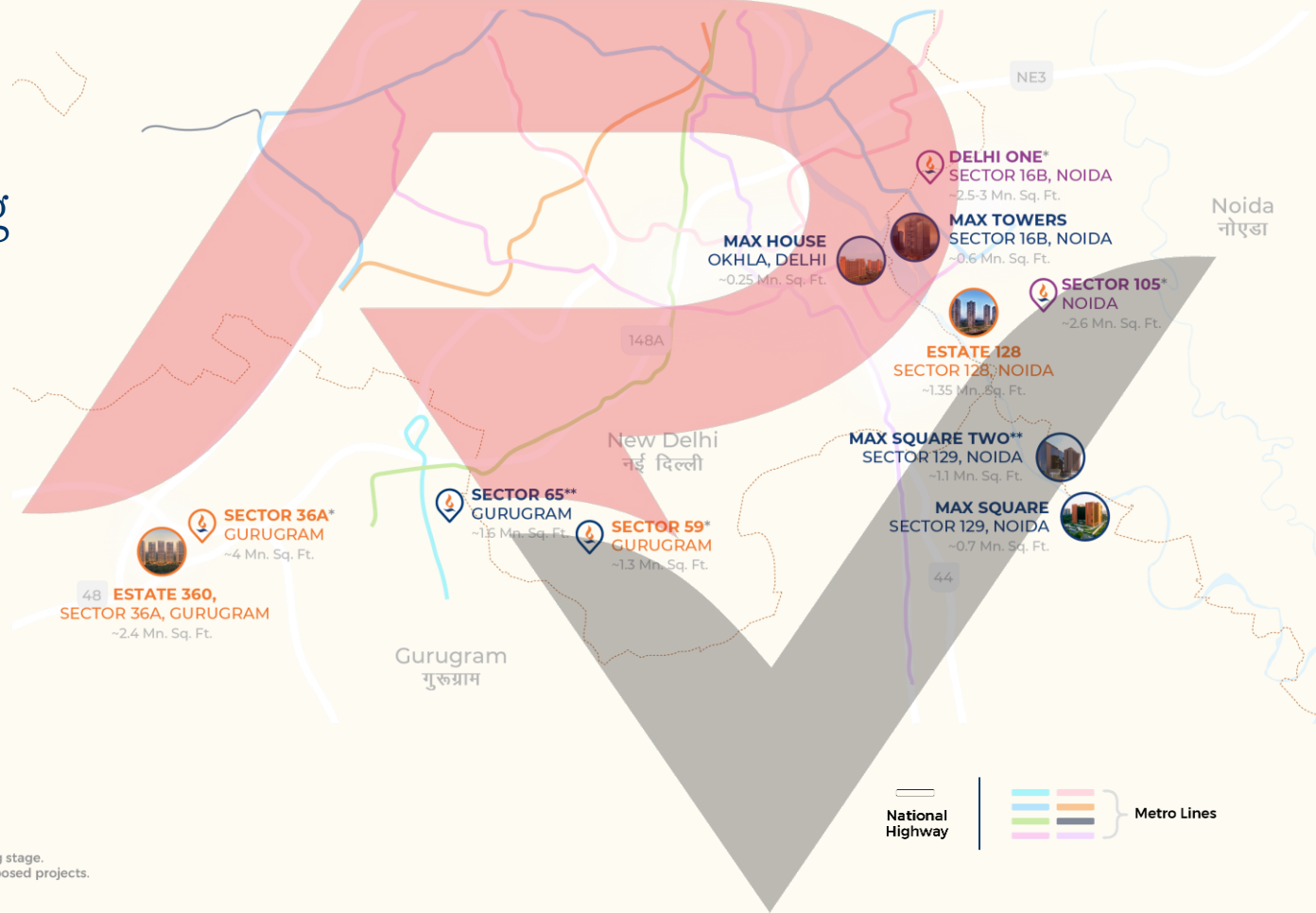
INTRODUCTION TO ESTATE 361 | HARERA Registration No.:  
RC/REP/HARERA/GGM/1012/744/2025/115 | HARERA Website: <https://haryanarera.gov.in>



Pictured: Max Square II — our newest **WorkWell** experience in Delhi NCR.

ARTISTIC RENDERING

Bringing  
*real* well-being  
to real estate.





Senior living managed by



## Expert Senior Care, *Apno Jaisi*

Estate 361's purposeful approach to community living lends special attention to the well-being of all age groups.

Antara, a pioneer in the field and the only integrated senior care ecosystem in India, will manage dedicated senior living residences and spaces at Estate 361. With a commitment to nurture thriving communities where each member feels valued, healthy and enriched, Antara offers residential living experiences, assisted care solutions and products to manage chronic health conditions through its various verticals:



Residences  
for seniors



Care Homes  
Care at Home  
AGEasy



Antara Dehradun



Antara Noida



# Learning Matters

Learning Matters is a dynamic, child-centred educational organisation for children, parents and educators. Our educational ecosystem is built around the simple yet powerful idea that children deserve more than just preparation for school — they deserve a childhood that's respected, joyful and full of meaning.

Created with the vision of celebrating and nurturing children so they can thrive and meaningfully contribute to the world, Learning Matters' educational philosophy is rooted in bringing the neuroscience of learning to classroom practices.

## Our values

### Child-Centred

Our work, our spaces and our aspirations are all centered around the child.

### Excellence & Beauty

We strive for excellence and beauty in all we do.

### Seva Bhav

We view our work as service, and approach all we do with love and respect.

### Joyful Community

We recognise that it takes a village to raise a child — and only if it's filled with joy can children grow up as joyful beings.



A Learning Matters classroom.

ACTUAL IMAGE





# A *shared* vision, realised by *strong* leadership.

## Founder's Vision

Ms. Sonya Philip, Founder and CEO of Learning Matters, has a mission to ensure all children experience success and have the tools to become “protagonists of their learning.”

## Partnership with Max Group (2020)

In 2020, Learning Matters partnered with the Max Group to build a shared vision for education – one that centres the emotional and developmental well-being of both children and their families. As Tara Singh Vachani shared: “We offer an engaging, enriching and wholesome environment to unwind, learn and foster friendships – needs integral to the well-being of children and parents, and we want to be proactive in meeting them.”

All the ways we show up for children:



### Thrive (18 months – 18 years)

Designed to address learning and developmental challenges with success-based strategies.



### Early Years (18 months – 4 years)

A play-based preschool where wonder, joy and learning come alive every day.



### The Learning Matters Academy

Workshops, courses and certifications for educators, parents, caregivers and more.

# ESTATE 361



Experience our  
Live*Well* philosophy at  
[www.realtyventuresindia.com](http://www.realtyventuresindia.com)

HARERA REGISTRATION NO. : **RC/REP/HARERA/GGM/1012/744/2025/115** HARERA WEBSITE: <https://haryanarera.gov.in/> The Project 'Estate 361' is registered with the HARERA with registration no. **RC/REP/HARERA/GGM/1012/744/2025/115**. Please refer to project details on the website of HARERA <https://haryanarera.gov.in/> prior to making any decision. The promoter of Estate 361 is Max Estates Gurgaon Two Ltd. (CIN- U68100DL2024PLC424818) having its Registered office at Max House, Kh No 335/2, 355/18,337, and 1511/339, Okhla Industrial Estate, New Delhi, Delhi, India, 110020. This is not an offer, an invitation to offer and/or commitment of any nature. The images include artistic impressions and stock images. The details of Project, Apartment/ Unit including but not limited to designs, dimensions, cost, facilities, plans, images, specifications, furniture, accessories, paintings, items, electronic goods, additional fittings/fixtures, decorative items, are only indicative in nature and are only for the purpose of illustrating/indicating a possible layout and may not form part of the standard specifications/ amenities/services to be provided in the Project, Apartment/ Unit. Intending buyers are advised to use their discretion in relying on the information/amenities described/shown therein. All specifications of the Project, Apartment/ Unit shall be as per the documents/information uploaded by the company on the website of HARERA and the agreement between the parties. 1 Sq. Mtr. is equal to 10.76 Sq.ft. **1 Acre is equal to 4046.86 Sq. Mt.**