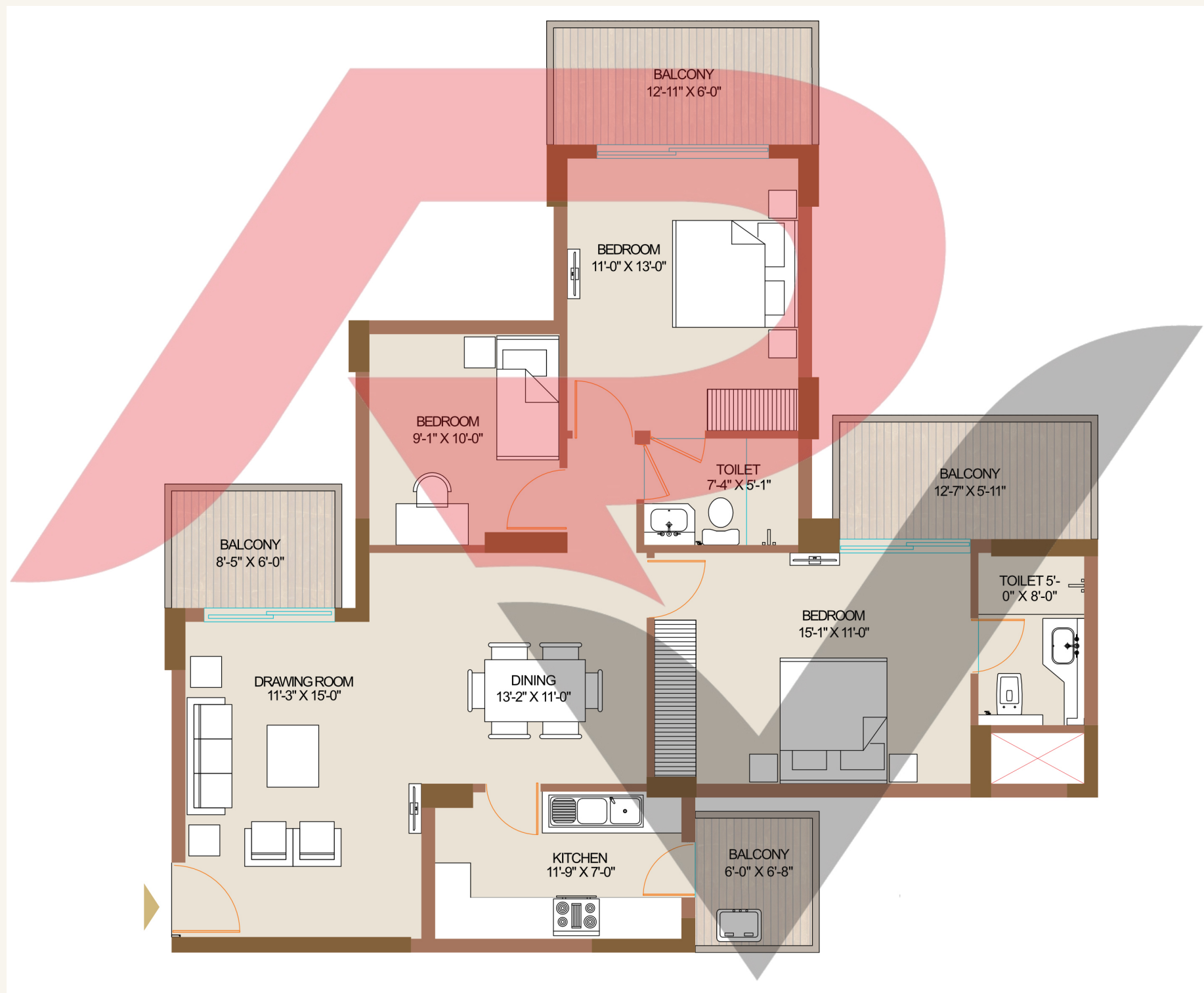


<p>TYPE - A</p> <p><b>3 BHK + 2 TOILETS</b></p>
<p>SUPER AREA</p> <p><b>1565 Sq. Ft. (145.44 Sq. Mt.)</b></p>

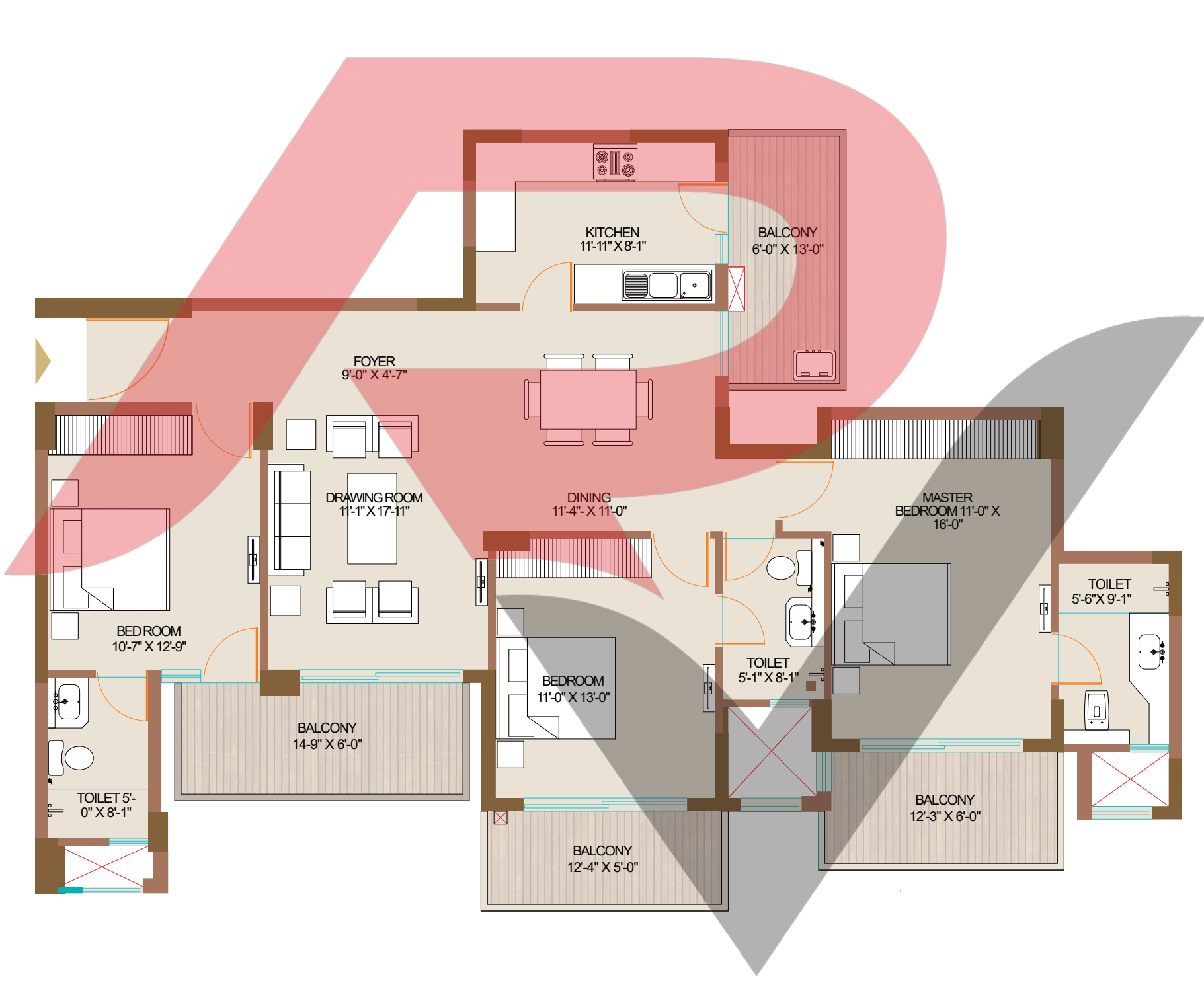
<p>Total Built-up Area</p> <p><b>1260 Sq. Ft. (117.06 Sq. Mt.)</b></p>
<p>Carpet Area</p> <p><b>888.03 Sq. Ft. (82.50 Sq. Mt.)</b></p>
<p>Balcony Area</p> <p><b>240 Sq. Ft. (22.29 Sq. Mt.)</b></p>



Disclaimer: The unit plan and layout described above are for representational purposes and are specific to a single unit. The same should not be considered as a standard offering. The size, layout, and features may vary based on the unit, floor, and location. The unit plan and layout provided along with the Agreement to Sale will be the final version. It is important to note that all measurements, positioning, fixtures, fittings, and other data depicted are approximate and for illustrative purposes only, and they are not drawn to scale. The company does not take responsibility for any errors, omissions, misstatements, or the use of the information shown. Additionally, the company reserves the right to make changes in the plans, specifications, dimensions, and elevations without any prior notice.

TYPE - B
3 BHK + 3 TOILETS
SUPER AREA
1910 Sq. Ft. (177.50 Sq. Mt.)

Total Built-up Area
1530 Sq. Ft. (142.10 Sq. Mt.)
Carpet Area
1076 Sq. Ft. (100.00 Sq. Mt.)
Balcony Area
294 Sq. Ft. (27.27 Sq. Mt.)



Disclaimer: The unit plan and layout described above are for representational purposes and are specific to a single unit. The same should not be considered as a standard offering. The size, layout, and features may vary based on the unit, floor, and location. The unit plan and layout provided along with the Agreement to Sale will be the final version. It is important to note that all measurements, positioning, fixtures, fittings, and other data depicted are approximate and for illustrative purposes only, and they are not drawn to scale. The company does not take responsibility for any errors, omissions, misstatements, or the use of the information shown. Additionally, the company reserves the right to make changes in the plans, specifications, dimensions, and elevations without any prior notice.

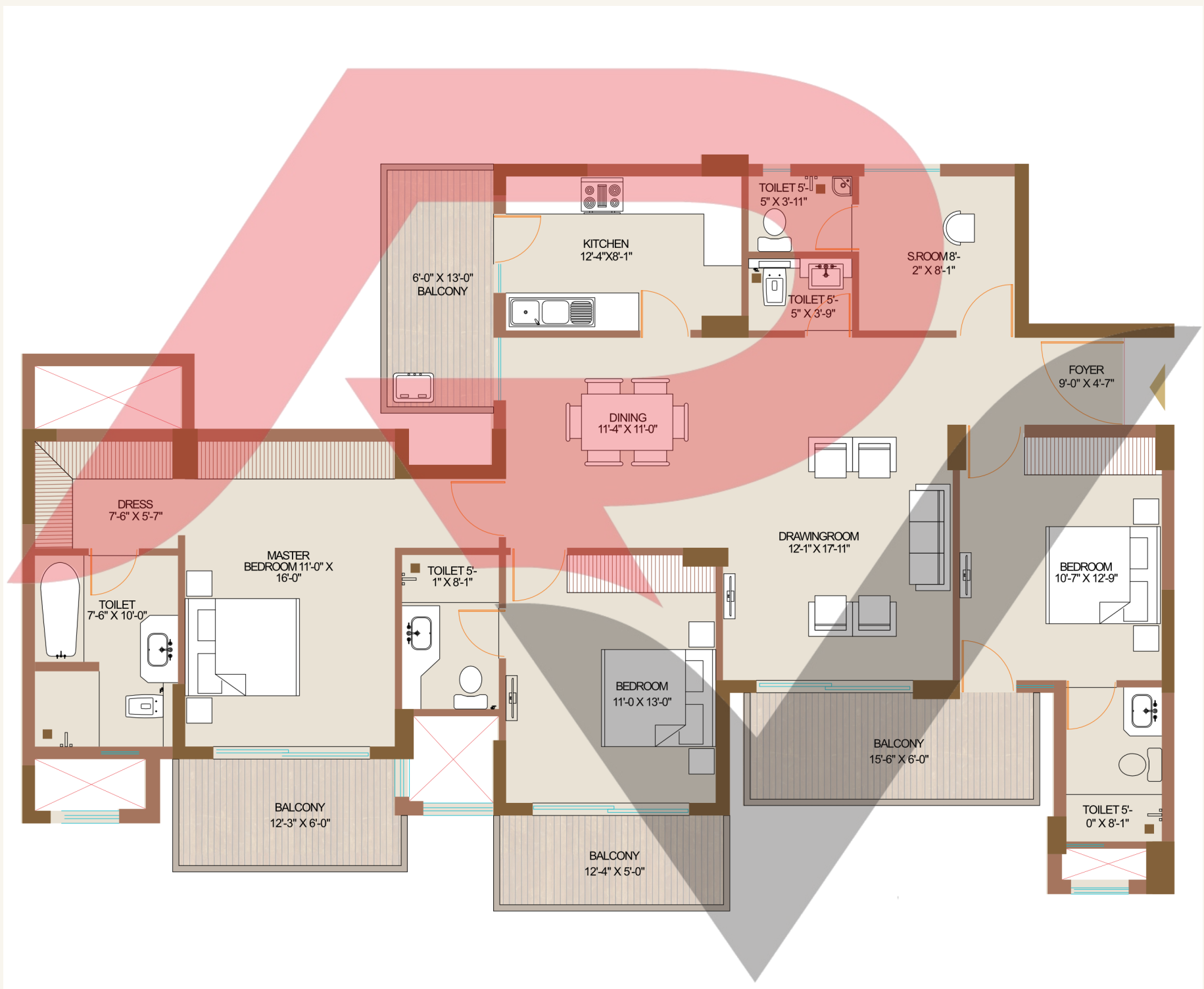
TYPE - C  
**3 BHK + 3 TOILETS**  
**+ STUDY/SERVANT ROOM + TOILET**

SUPER AREA  
**2175 Sq. Ft. (202.13 Sq. Mt.)**

Total Built-up Area  
**1772 Sq. Ft. (202.13 Sq. Mt.)**

Carpet Area  
**1292 Sq. Ft. (119.99 Sq. Mt.)**

Balcony Area  
**258 Sq. Ft. (27.64 Sq. Mt.)**



Disclaimer: The unit plan and layout described above are for representational purposes and are specific to a single unit. The same should not be considered as a standard offering. The size, layout, and features may vary based on the unit, floor, and location. The unit plan and layout provided along with the Agreement to Sale will be the final version. It is important to note that all measurements, positioning, fixtures, fittings, and other data depicted are approximate and for illustrative purposes only, and they are not drawn to scale. The company does not take responsibility for any errors, omissions, misstatements, or the use of the information shown. Additionally, the company reserves the right to make changes in the plans, specifications, dimensions, and elevations without any prior notice.